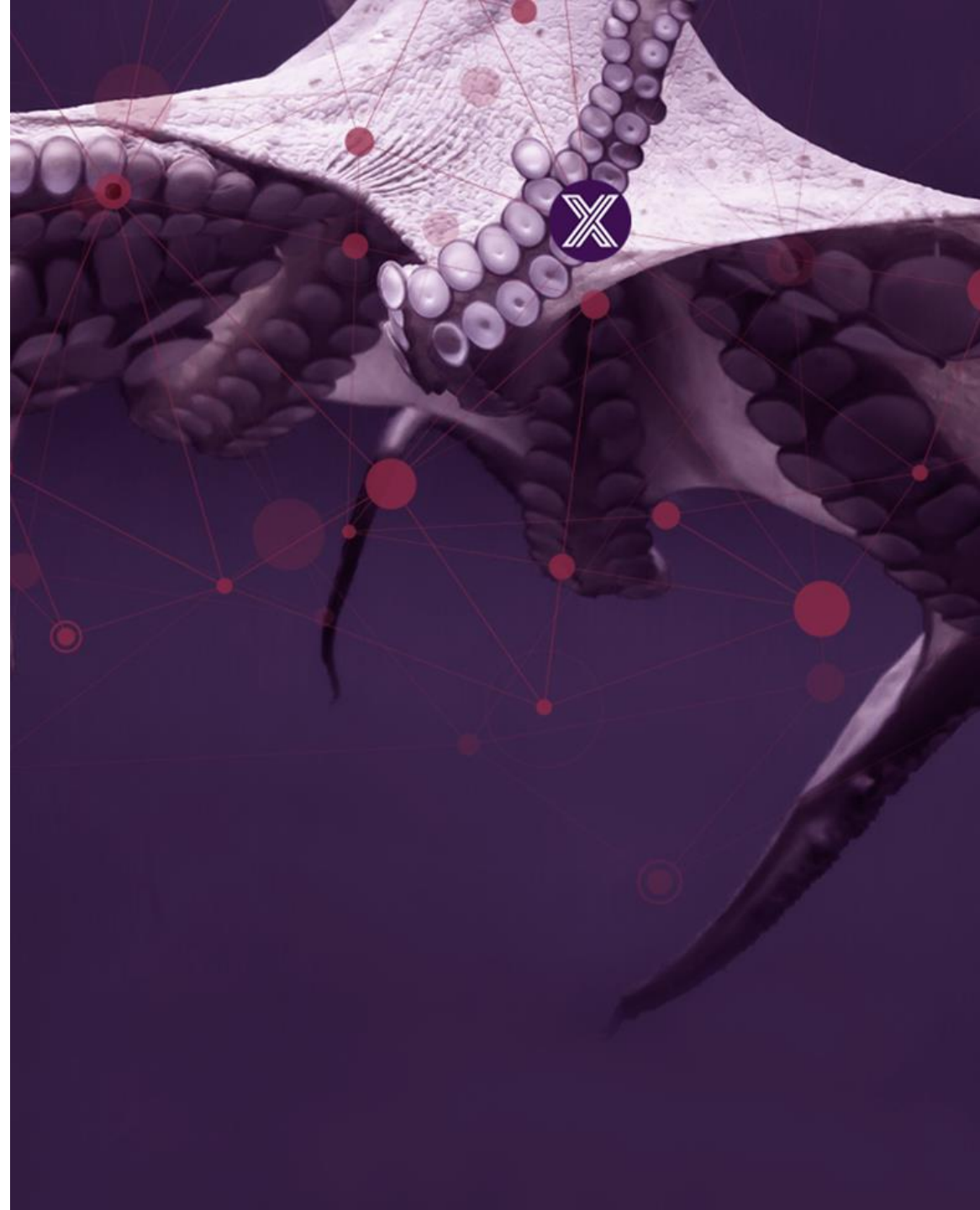


EDGE X FOUNDRY™

Vertical Solutions WG Meeting

February 5, 2018



Meeting Logistics

Time: February 5, 2018 5pm PST – 6pm PST

Join from PC, Mac, Linux, iOS or Android: <https://zoom.us/j/455750502>

Or iPhone one-tap (US Toll): +16465588656,,455750502# or +16699006833,,455750502#

Or Telephone:

Dial: +1 646 558 8656 (US Toll) or +1 669 900 6833 (US Toll)

+1 855 880 1246 (US Toll Free)

+1 877 369 0926 (US Toll Free)

Meeting ID: 455 750 502

International numbers available: <https://zoom.us/zoomconference?m=C43RI2DoHEKX09Ccmt8YVuYg1Qr1xKHM>

** Vertical Sol. WG calls are recorded and added to Wiki post-call

LF Antitrust Policy Notice

EdgeX Foundry meetings involve participation by industry competitors, and it is the intention of the Linux Foundation to conduct all of its activities in accordance with applicable antitrust and competition laws. It is therefore extremely important that attendees adhere to meeting agendas, and be aware of, and not participate in, any activities that are prohibited under applicable US state, federal or foreign antitrust and competition laws.

Examples of types of actions that are prohibited at EdgeX Foundry meetings and in connection with Linux Foundation activities are described in the Linux Foundation Antitrust Policy available at <http://www.linuxfoundation.org/antitrust-policy>. If you have questions about these matters, please contact your company counsel, or if you are a member of the Linux Foundation, feel free to contact Andrew Updegrove of the firm of Gesmer Updegrove LLP, which provides legal counsel to the Linux Foundation.

Today's Agenda

- Introduction of the new Chair
- Updates from the F2F and beyond
- Updates from Oil & Gas Project
- Plan for EdgeX-based Testbed targeting Smart Factory domain
- AoB



EDGE X FOUNDRY™

Introduction of the new Chair

Moonki Hong (Samsung)



EDGE X FOUNDRY™

Updates from the F2F and beyond

Moonki Hong (Samsung)

Specifics on Vertical Sol. WG

- Contribution process for a specific vertical domains (Thx, Jim! 😊)
 - Evaluation process
 - Proposed in WG -> TSC -> Ad Hoc Review Group -> (Vertical Sol. WG) -> TSC
 - ***Present your proposed additions or changes to the chairperson before starting your effort!***
 - Evaluation criteria
 - Architectural fit, Quality of the code, Quality and depth of documentation, Test coverage, Performance impact, DevOps impact, Long-term maintenance, Roadmap priority, Dependency analysis, Represent a fork of an upstream project or not, License requirement
 - Repository policy under the same EdgeX GitHub in a different
 - Experimental, Vertical Specific, and the existing repositories (as a master branch)

Member request: Feedback

- Please share your thoughts as feedback on this! :
<https://wiki.edgexfoundry.org/display/FA/Contributor%27s+Process>
- Mailto :
moonki1.hong@samsung.com
edgex-tsc-vertical-solutions@lists.edgexfoundry.org



EDGE X FOUNDRY™

Updates from Oil & Gas Project

Alberto Dellabianca (NOV)

The background features a detailed illustration of a snake's head and neck, rendered in a light, almost white color against a dark purple background. A network of red dots connected by thin lines is overlaid on the snake's body. A small, circular logo with a white 'X' on a dark purple background is positioned near the snake's head. The text 'EDGE X FOUNDRY™' is centered in a white rectangular box.

EDGE X FOUNDRY™

Plan for EdgeX-based Testbed targeting Smart Factory

Moonki Hong (Samsung)

Background

- EdgeX has been gaining momentum in public
 - Consistent improvement : common platform for “Edge Computing”
 - Vertical requirements and use cases : Smart Factory, Oil&Gas, and so on.
- Industry Trend
 - Collaboration with de-facto organizations : IIC, OPC Foundation, Open Group, etc...
- We have been trying to...
 - Organize and lead the Vertical Sol. WG and designated projects
 - Code contributions : Smart Factory
 - And... collaboration with other organizations : Establishment of IIC Testbed

Establishment Efforts on Progress...

- Explore the establishment of “Edge” platform Testbed under IIC
 - Current entities : Samsung & Schneider Electric
 - Current consensus of topic :
“Software-defined” Edge for Smart Factory
 - Samsung specifically wants to leverage “EdgeX”, but still need to have “common understanding” of “Edge” in this TestBed.
- Next steps
 - Tech experts from both companies will schedule initial meeting to jointly define the “Edge” item for the TestBed.
 - [Question] Is it mandatory to have the EdgeX membership?

TestBed Proposal

- How we achieve our goal?
 - Team-up a Special Interest Group both in EdgeX & IIC
 - Might be able to be with the existing IIC Committee in EdgeX
 - Promotion us (EdgeX itself) to IIC community
 - Preferable target: IIC leadership
 - Whitepaper publication as intermediate milestone
 - Establishment of IIC Testbed takes a long time : almost 1 year
 - Set-up a viable laboratory infra for a test bed
 - Secure candidates as many as possible
 - Complete establishment of EdgeX-powered IIC test bed
 - First come, first go : Smart Factory 1st, Oil&Gas and others on queue

Member Request

- Populate attraction of EdgeX in IIC domain
 - Does EdgeX secure the joint meeting with IIC leadership in the upcoming IIC meeting?
- Recruit participants for test bed team
 - Smart Factory: “OPC-UA” preferred
 - Device vendors, Service providers, applications, solutions, etc.
- Guide and support in terms of whitepaper publication in IIC
- Joint promotion as many as possible
 - Any permanent demo wall or something from EdgeX [Vertical Sol. WG]
- More liaison relationship required
 - What about Open Group? It has many stakeholders in the industrial domains
- Clear guidance in terms of EdgeX membership condition for participation
 - E.g. Schneider-Electric, any organizations in terms of lab and products for testbed, ...



EDGE X FOUNDRY™

AoB



EDGE X FOUNDRY™

Thank You