

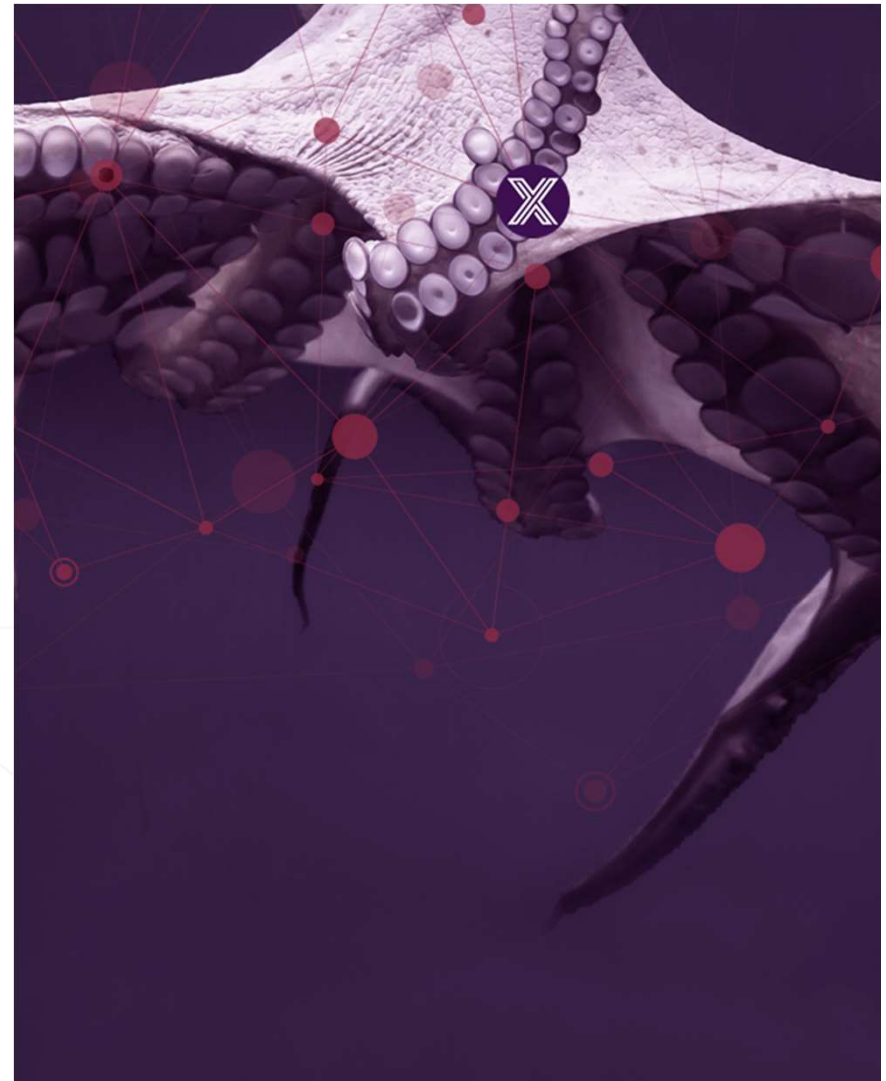
EDGE X FOUNDRY™

Vertical Solutions Working Group

March 17, 2020

Camilo Dennis (Intel) & Henry Lau (HP)

edgexfoundry.org |  [@edgexfoundry](https://twitter.com/edgexfoundry)



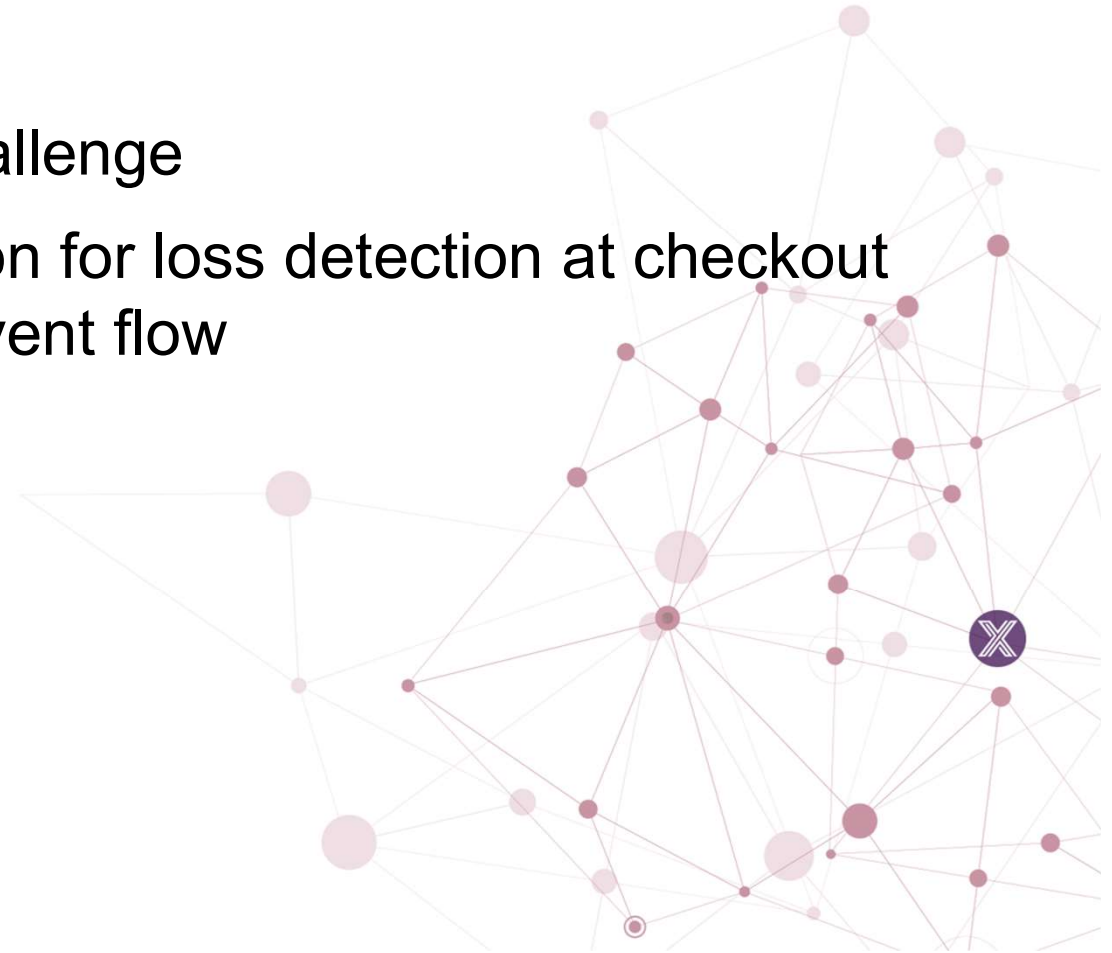
LF Antitrust Policy Notice

EdgeX Foundry meetings involve participation by industry competitors, and it is the intention of the Linux Foundation to conduct all of its activities in accordance with applicable antitrust and competition laws. It is therefore extremely important that attendees adhere to meeting agendas, and be aware of, and not participate in, any activities that are prohibited under applicable US state, federal or foreign antitrust and competition laws.

Examples of types of actions that are prohibited at EdgeX Foundry meetings and in connection with Linux Foundation activities are described in the Linux Foundation Antitrust Policy available at <http://www.linuxfoundation.org/antitrust-policy>. If you have questions about these matters, please contact your company counsel, or if you are a member of the Linux Foundation, feel free to contact Andrew Updegrave of the firm of Gesmer Updegrave LLP, which provides legal counsel to the Linux Foundation.

Agenda

- Update to ideation challenge
- Real time sensor fusion for loss detection at checkout
reference solution - event flow

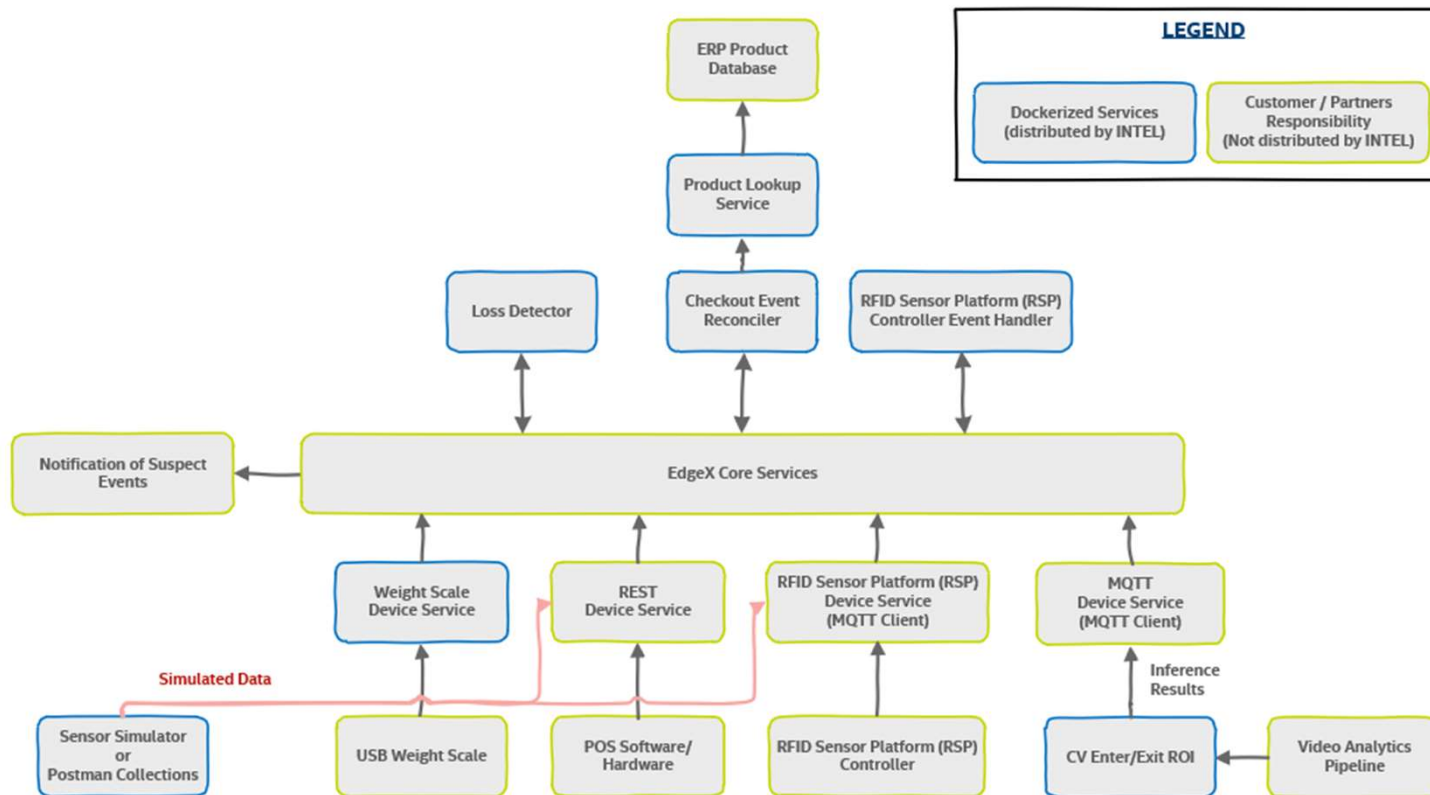




Overview of LOSS PREVENTION Services

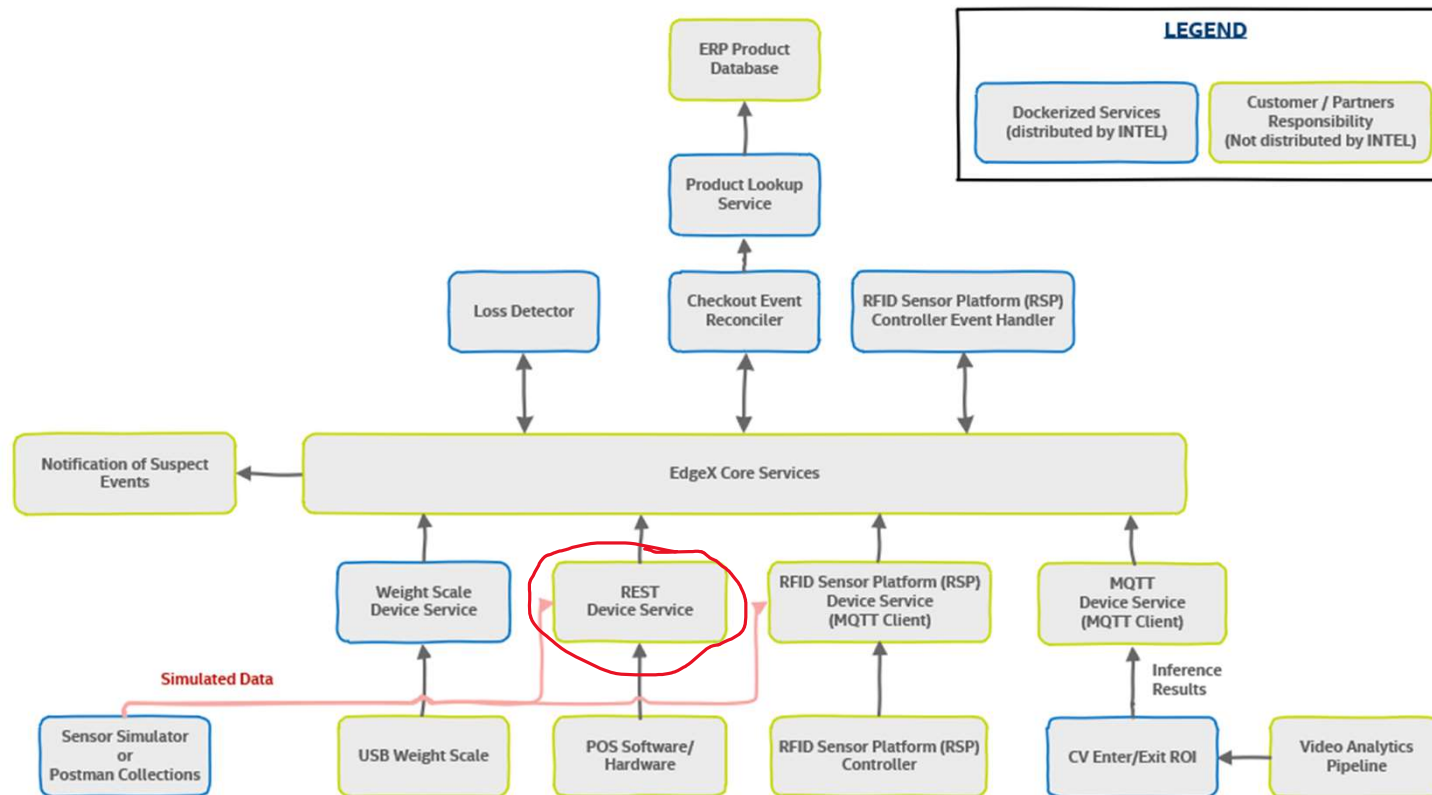
High Level Architecture

REAL TIME SENSOR FUSION FOR LOSS DETECTION AT CHECKOUT ARCHITECTURE DIAGRAM



POS Device Service

REAL TIME SENSOR FUSION FOR LOSS DETECTION AT CHECKOUT ARCHITECTURE DIAGRAM

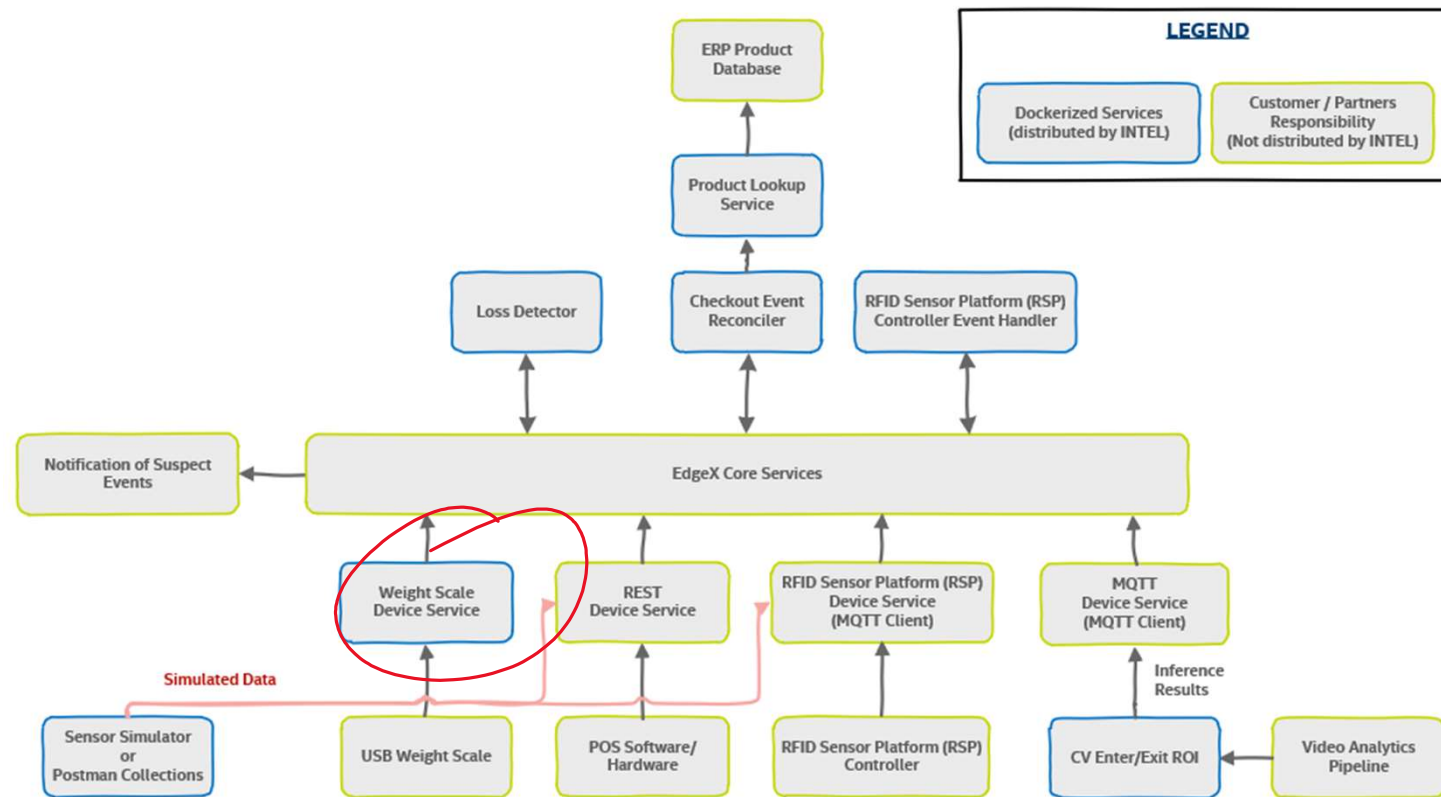


MQTT/REST POS device service is also a micro service based on EdgeX's device service SDK

- Receives POS events
- Pushes POS event data into EdgeX core data
- Reads data either from Unicenta –or- 3rd Party POS Software
- Image of docker-compose service: device-pos-rtt-log and device-mqtt (optional- configured for POS)
- Requires running docker services:
 - EdgeX Docker services
 - Checkout-lane-reconciler Docker service

Weight Scale Device Service

REAL TIME SENSOR FUSION FOR LOSS DETECTION AT CHECKOUT ARCHITECTURE DIAGRAM

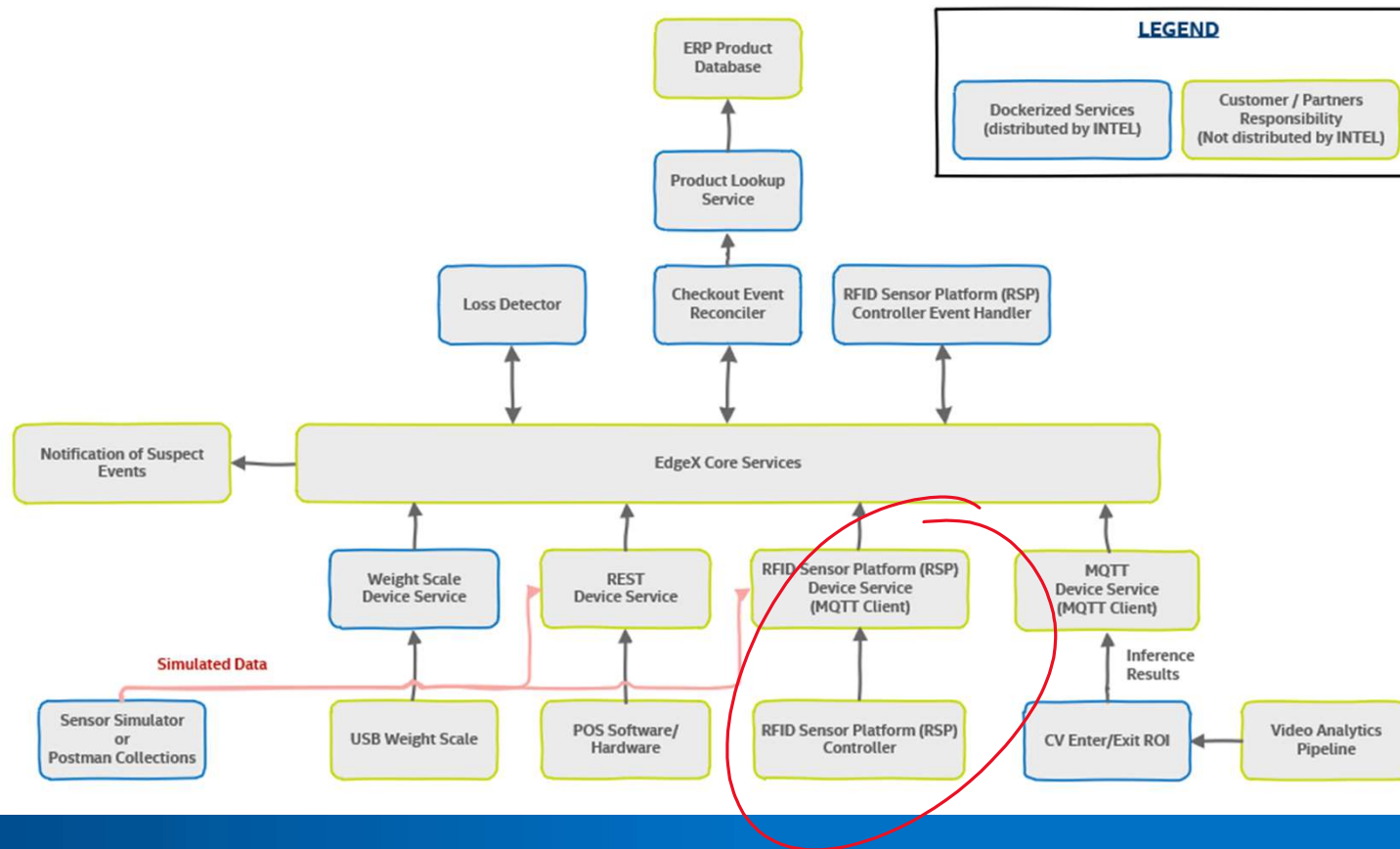


Weight scale device service

- Microservice based on EdgeX's device service SDK
- connect to checkout lane point of sale (POS) system's security weighing scale [the scale in the bagging area]
- Pushes scale weight reading data into EdgeX core data
- Image of docker-compose service: device-scale
- Requires running docker services:
 - the edgex-go docker services
 - Checkout-lane-reconciler docker service
- Hardware uses serial scale that communicates over the ECR Interface protocol #5

RFID Device Service

REAL TIME SENSOR FUSION FOR LOSS DETECTION AT CHECKOUT ARCHITECTURE DIAGRAM

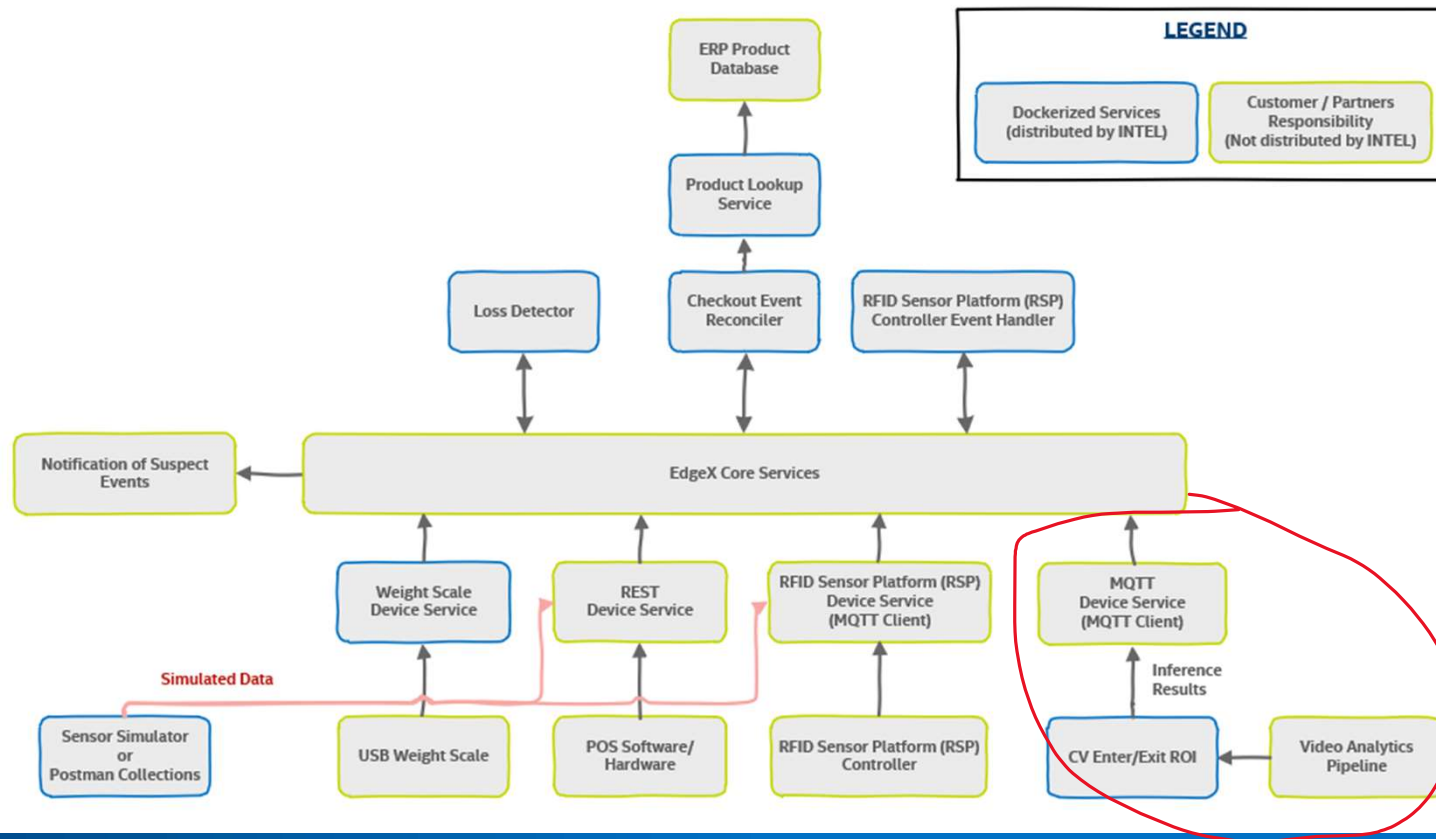


RFID/RSP Solution and device service

- Two Services
 - Microservice based on EdgeX's device service SDK – Already integrated
 - RSP Gateway software manages RFID Sensors
- Intel RFID Solution typically used to monitor store inventory
- Available here: <https://software.intel.com/en-us/retail/rfid-sensor-platform>

CV/ROI Services

REAL TIME SENSOR FUSION FOR LOSS DETECTION AT CHECKOUT ARCHITECTURE DIAGRAM

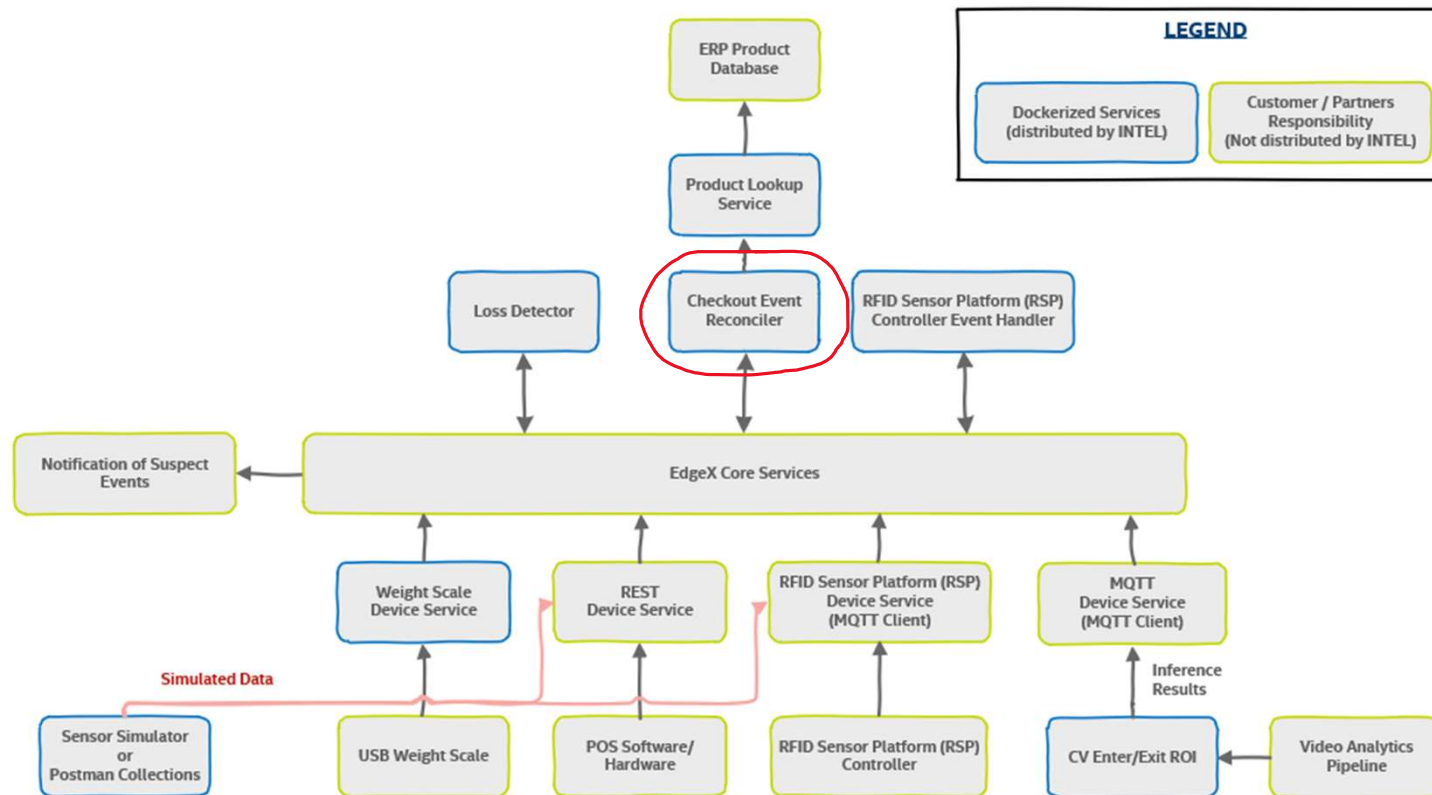


CV/ROI Services

- Three Services
 - VAS – RESTful front end to managing a video ingestion pipeline
 - CV/ROI Service – interprets inference data from VAS to determine Region of Interest(ROI)
 - MQTT Device Service ingests data
- Available here: <https://github.com/intel/video-analytics-serving>

Basket / Checkout-lane Reconciler

REAL TIME SENSOR FUSION FOR LOSS DETECTION AT CHECKOUT ARCHITECTURE DIAGRAM

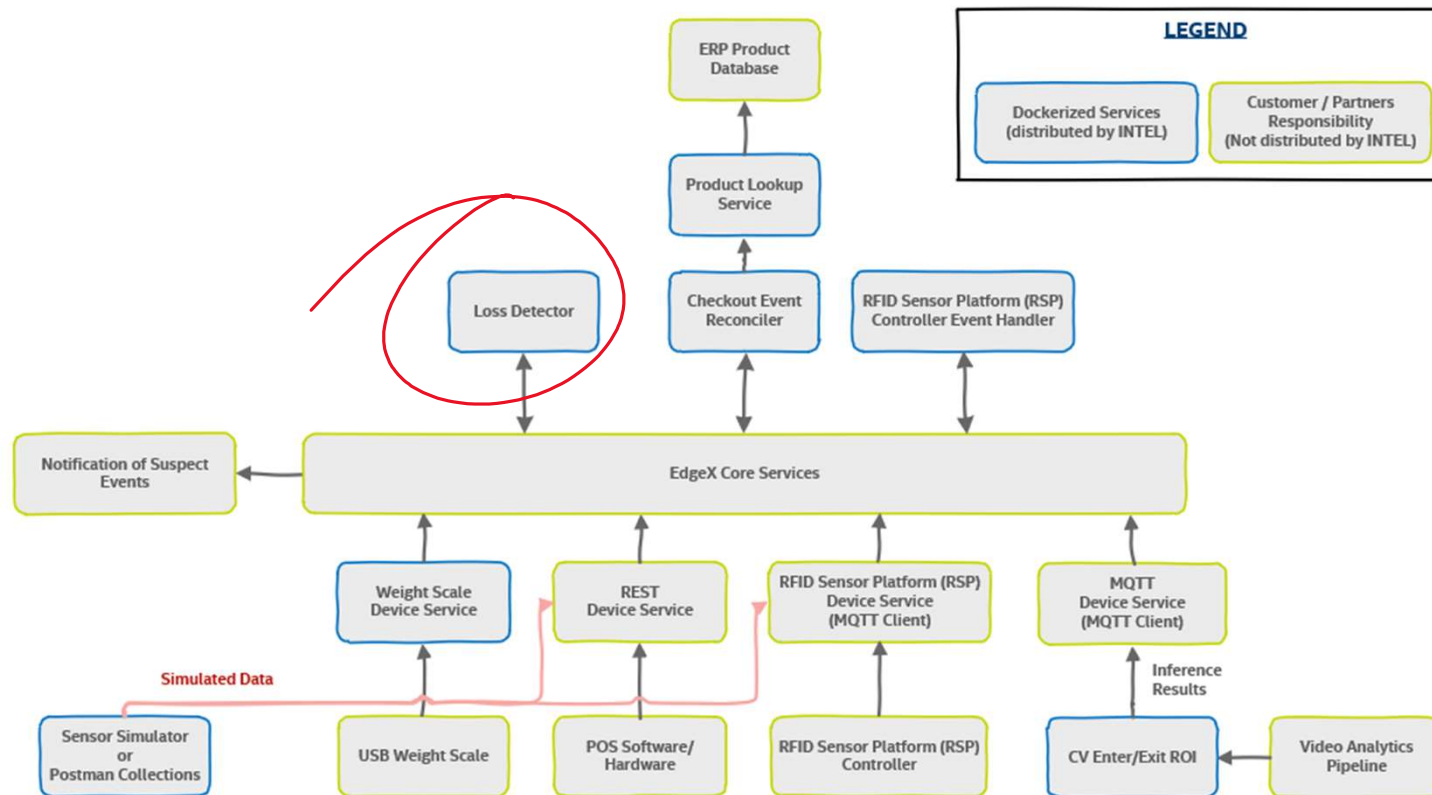


Checkout-lane or basket reconciler service is a micro service based on EdgeX's App Function SDK

- Keeps track of POS + Scale events to reconcile them in the case of theft detection
- Gets POS event data from EdgeX core data
- Push suspect items to Loss Detector
- Image of docker-compose service: checkout-lane-reconciler
- Requires running services:
 - EdgeX Docker services
 - PIM (Product Item Menu) lookup Docker service
 - Loss detector Docker service

Loss Detector

REAL TIME SENSOR FUSION FOR LOSS DETECTION AT CHECKOUT ARCHITECTURE DIAGRAM

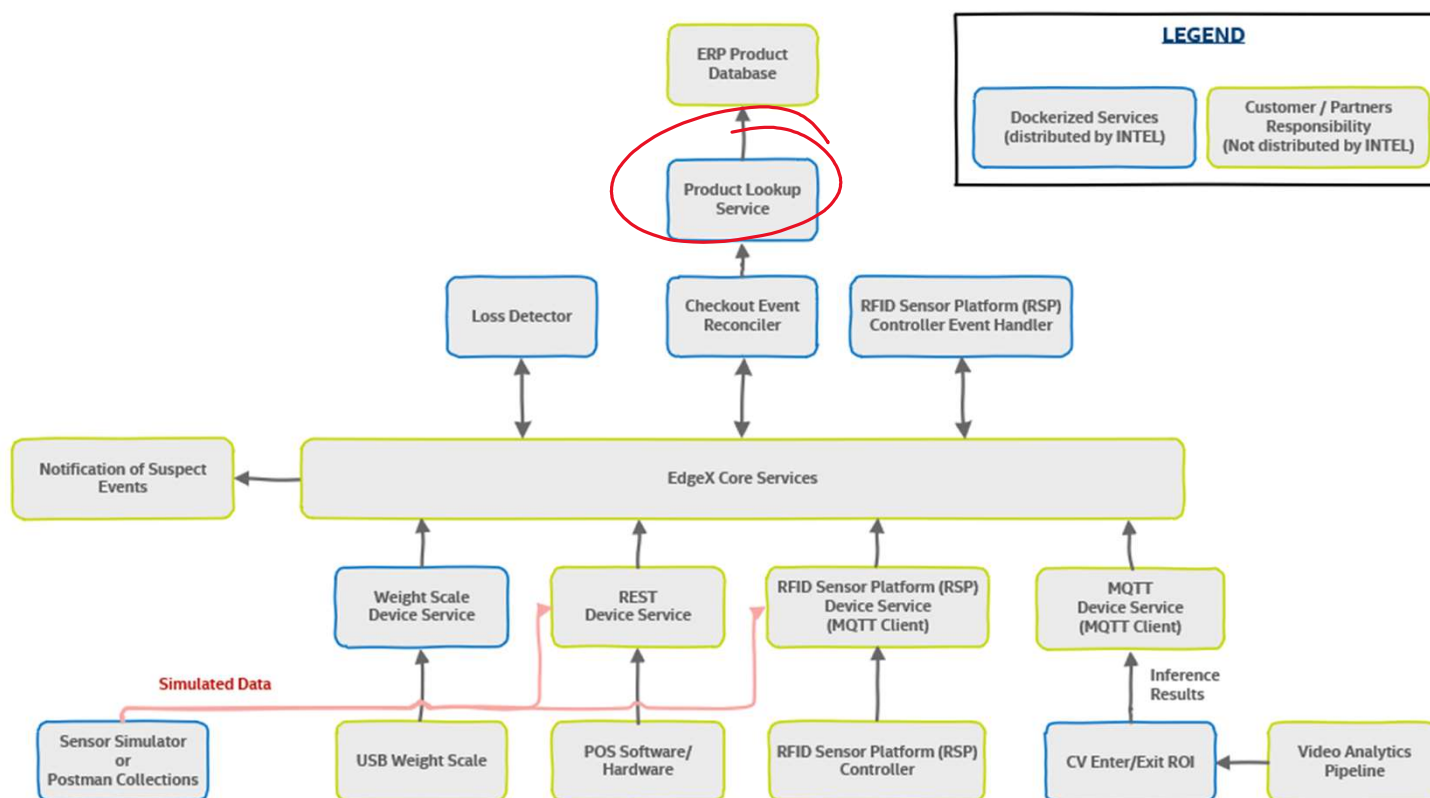


Loss detector service

- Microservice based on EdgeX's App Function SDK
- Receives events from the EdgeX bus (from Reconciler)
- Processes loss detection modality for suspect scale items and sends notifications
- Image of docker-compose service: loss-detector
- Requires running services:
 - EdgeX Docker services
 - SMTP server available

PIM-Lookup Service

REAL TIME SENSOR FUSION FOR LOSS DETECTION AT CHECKOUT ARCHITECTURE DIAGRAM

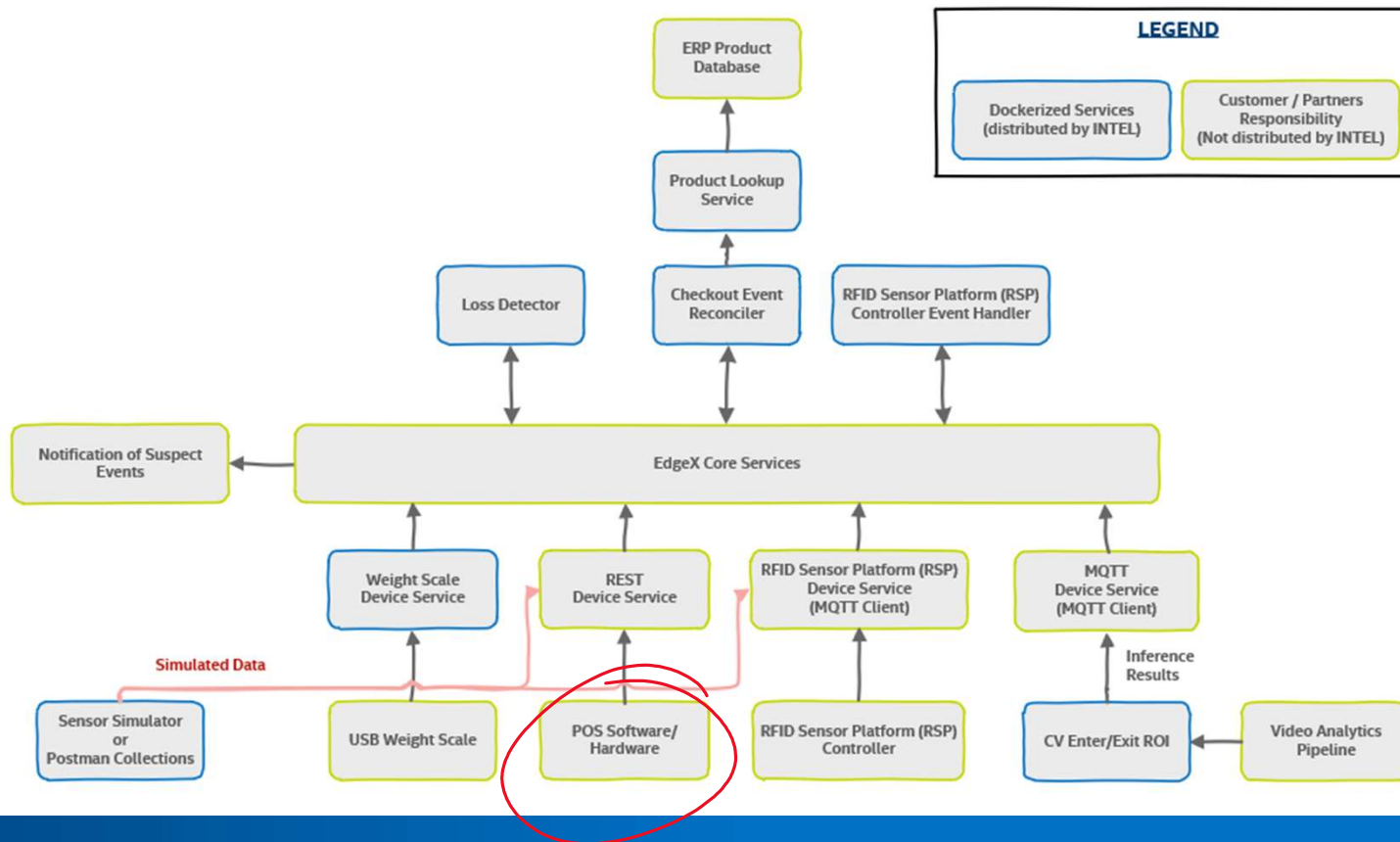


PIM-Lookup service

- Microservice to get the product weight min/max values
- For Unicenta POS SW: PIM values are stored in MySQL database
- Database initialization is required to preload demo PIM values
- Image of docker-compose service: pim-lookup
- The service also can fill the PIM fields of products of Unicenta MySQL via command line flag **-file="path to JSON file"**. This is useful when the 3rd party POS database is not available and one can use the local file.

POS Software- Unicenta

REAL TIME SENSOR FUSION FOR LOSS DETECTION AT CHECKOUT ARCHITECTURE DIAGRAM



Unicenta is 3rd party POS (point of sales) software application uses to create POS events

- POS events examples: basket open, payment start, payment close, basket close
- Requires Oracle Java SE DK to be installed first
- Requires MySQL database instance as the backend storage of Unicenta
- Provides some Java plugin scripts to interacts with product data and send the POS event data as JSON output
- Those pre-requisites can be provided through built MySQL docker image that has DB initialized with products and plugin scripts

Setup process

Run **docker-compose up** to have all components up and running. But if Unicenta is not available in docker, one can do the steps as follows:

1. Download and install Oracle Java SE DK:
<https://www.oracle.com/technetwork/java/jdk8-downloads-2133151.html>
2. Download and install Unicenta: <https://unicenta.com/download-files/installers/>
3. If not yet, configure mysql database (included in docker-compose) for Unicenta to run
4. All backend server ingredients are in docker-compose YAML to bring up all necessary services: `docker-compose up`
5. If running Unicenta as standalone, one can use installed shell script to start in command line: `/opt/unicentaopos-4.6/start.sh`

Meeting Dial-in

Join Zoom Meeting

<https://zoom.us/j/132889142> (

<https://www.google.com/url?q=https%3A%2F%2Fzoom.us%2Fj%2F132889142&sa=D&ust=1552503732499000&usg=AFQjCNFjmtytftqtp3lCh2uhPNHHlp98TYw>)

One tap mobile

+16699006833,,132889142# US (San Jose)

+16465588656,,132889142# US (New York)

Dial by your location

+1 669 900 6833 US (San Jose)

+1 646 558 8656 US (New York)

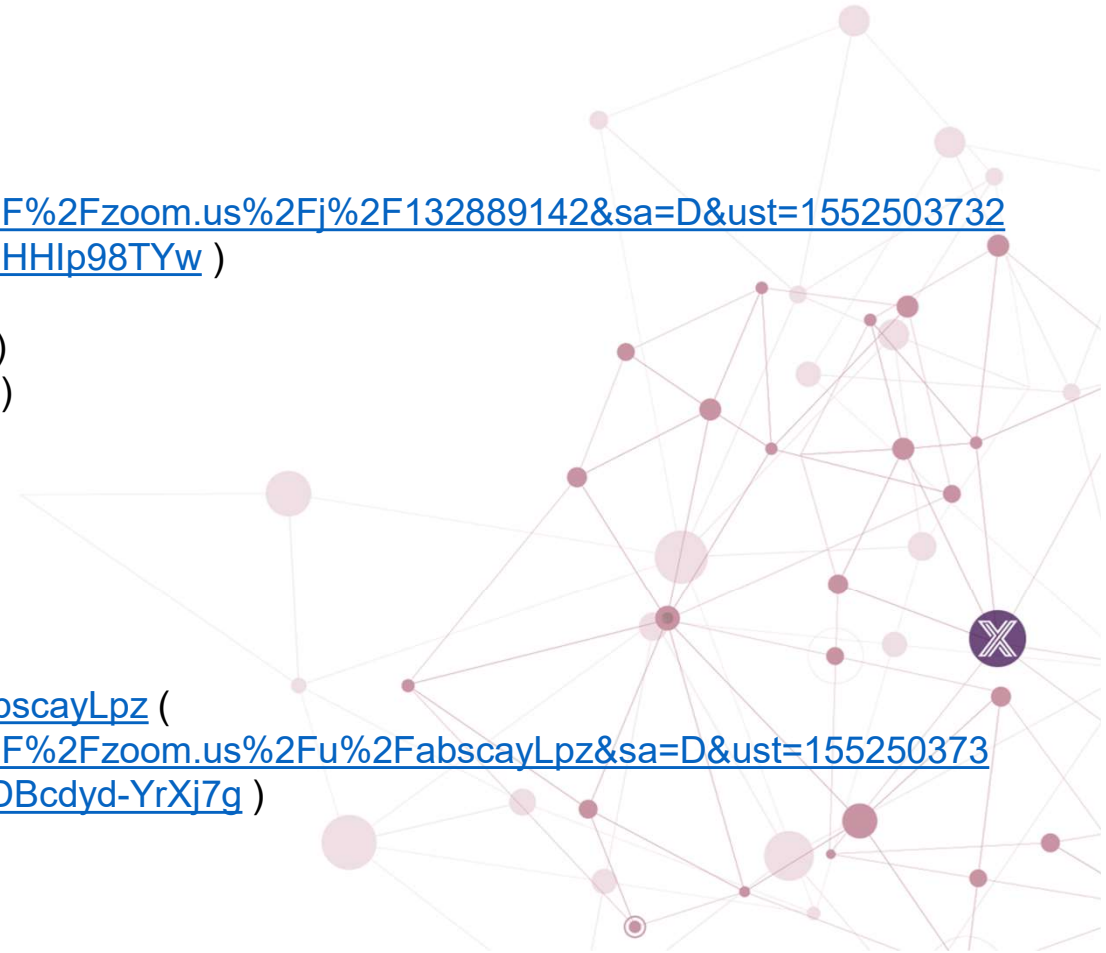
855 880 1246 US Toll-free

877 369 0926 US Toll-free

Meeting ID: 132 889 142

Find your local number: <https://zoom.us/u/abscayLpz> (

<https://www.google.com/url?q=https%3A%2F%2Fzoom.us%2Fu%2FabscayLpz&sa=D&ust=1552503732499000&usg=AFQjCNEMKuQdf-1HfMXI0DBcdyd-YrXj7g>)





EDGE X FOUNDRY™

Thank you

edgexfoundry.org |  [@edgexfoundry](https://twitter.com/edgexfoundry)