



## Vertical Solutions Working Group

October 6, 2020

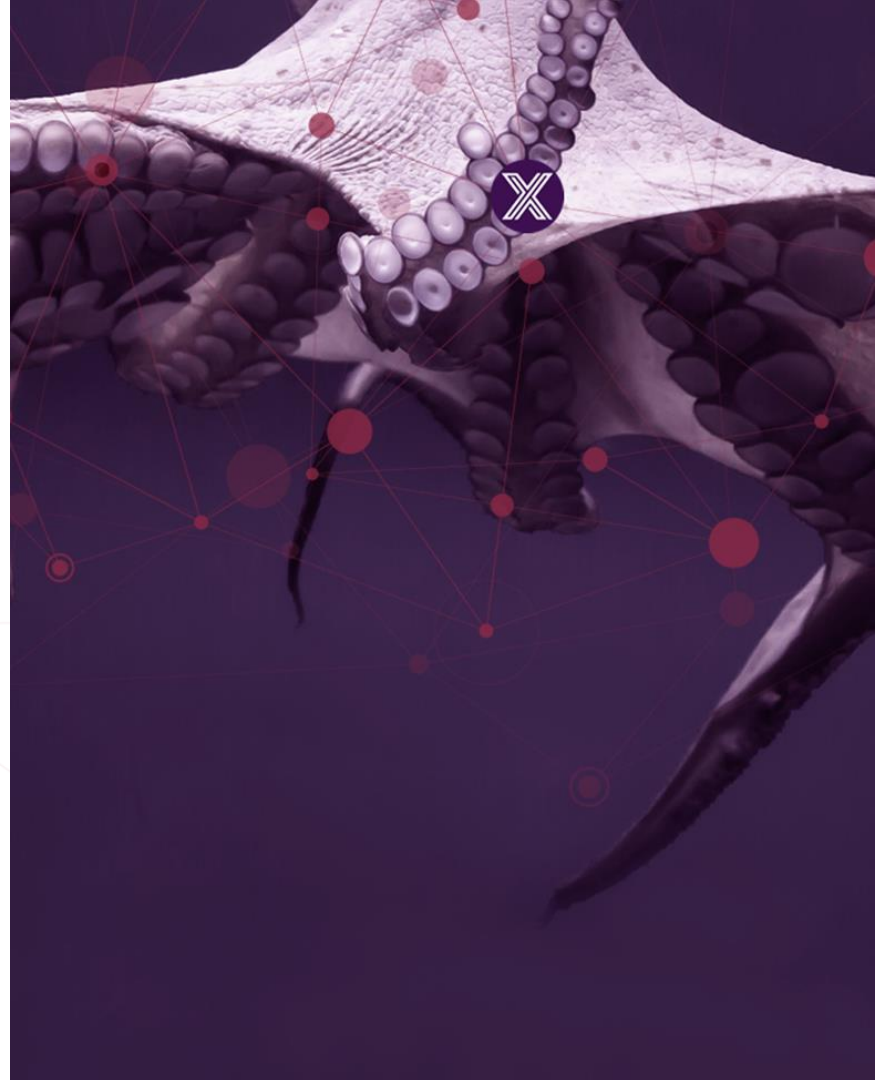
TSC chair:

Jim White (IOTech) – [jim@iotechsys.com](mailto:jim@iotechsys.com)

Working Group Co-chairs:

Camilo Dennis (Intel) – [camilo.a.dennis@intel.com](mailto:camilo.a.dennis@intel.com)

Henry Lau (HP) – [henry.lau@hp.com](mailto:henry.lau@hp.com)



# LF Antitrust Policy Notice

EdgeX Foundry meetings involve participation by industry competitors, and it is the intention of the Linux Foundation to conduct all of its activities in accordance with applicable antitrust and competition laws. It is therefore extremely important that attendees adhere to meeting agendas, and be aware of, and not participate in, any activities that are prohibited under applicable US state, federal or foreign antitrust and competition laws.

Examples of types of actions that are prohibited at EdgeX Foundry meetings and in connection with Linux Foundation activities are described in the Linux Foundation Antitrust Policy available at <http://www.linuxfoundation.org/antitrust-policy>. If you have questions about these matters, please contact your company counsel, or if you are a member of the Linux Foundation, feel free to contact Andrew Updegrave of the firm of Gesmer Updegrave LLP, which provides legal counsel to the Linux Foundation.

# Agenda

## Intel to present Retail Reference Implementation of Automated Checkout using EdgeX

Learn how Intel is using Edge Foundry as a key ingredient for open reference implementations in Retail. Get an overview of the Automated Checkout reference implementation, why was EdgeX selected and how it is used.

Meeting recording & slides to be posted to:

<https://wiki.edgexfoundry.org/display/FA/Vertical+Solutions+Working+Group>

The background features a detailed illustration of a squid's mantle and arms, rendered in shades of purple and white. A network of red dots connected by thin lines is overlaid on the squid, suggesting a digital or data theme. A small, stylized 'X' logo is positioned on the squid's mantle. The logo consists of a white 'X' inside a dark purple circle, which is itself inside a white circle.

EDGE X FOUNDRY™

Thank you