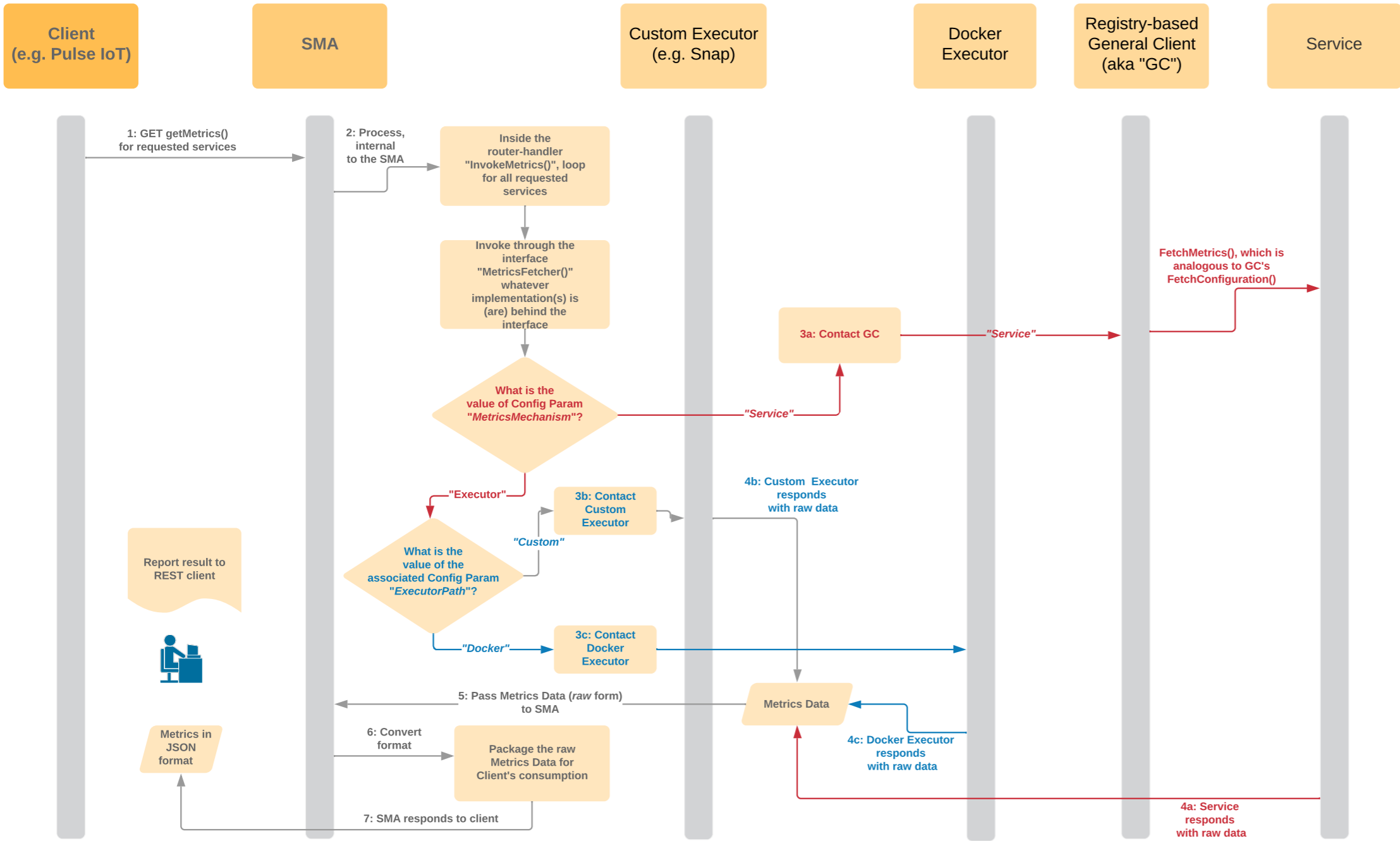


Executor Gets Service Metrics (Redesign - 2.0)

Khalid Ahmad | July 30, 2019

Legend:

- "Service" flow is depicted in RED
- "Custom" flow is depicted in GREY
- "Docker" flow is depicted in BLUE



Description

A sequence diagram is a type of interaction diagram because it describes how-and in what order-a group of objects works together. This sequence diagram shows the process of scheduling an event.

To customize this template, click on any shape and type the information you would like to include. Rearrange and add shapes used as needed. **OR** automatically create your sequence diagram by using the markup feature.

Sequence Diagram Tutorials
(Hold Shift + ⌘ or Ctrl, then click)

- Read our UML blog post
- Visit our UML sequence markup help center
- Read our UML sequence diagram page
- Learn how to make a UML sequence diagram
- Learn how to automatically create UML sequence diagrams
- Watch Lucidchart basic tutorials