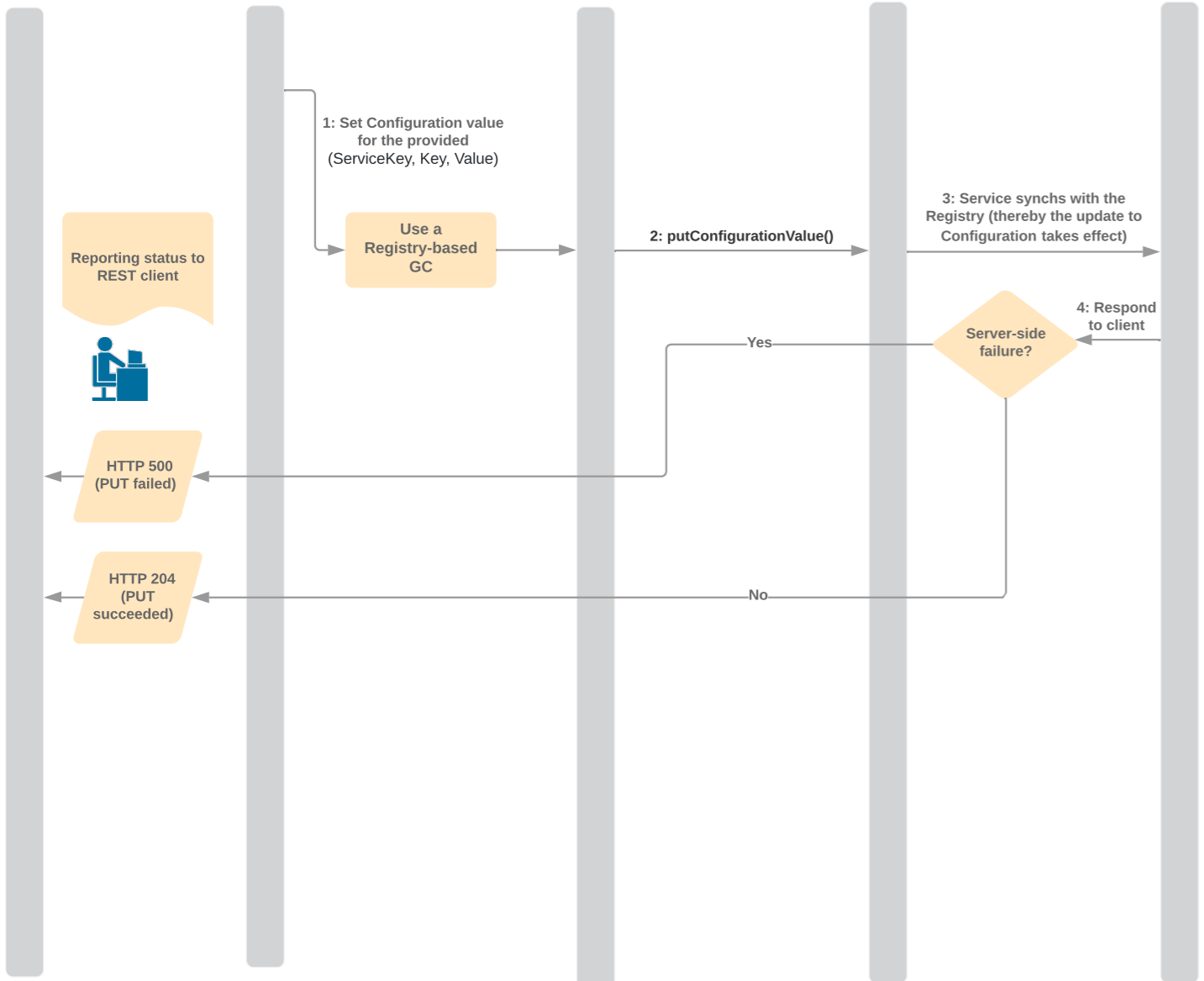
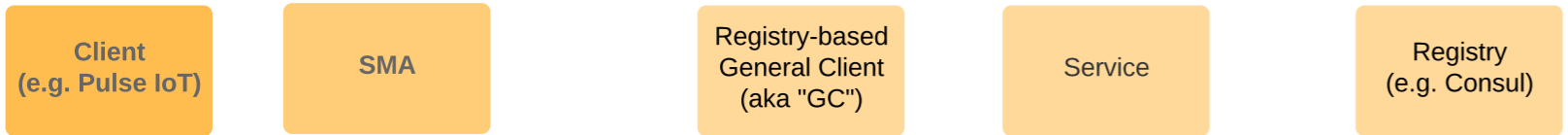


SMA Sets Configuration (Writable) Without Restart (With WG Feedback)

Note that this scenario is for when Configuration is by Registry Service Provider *(and not by local file system)

* For that scenario (i.e. when local file system is used), the SMA simply relies on the `ready-made` GC client that gets created (and initialized, hence ready-for-use) on start of `EdgeX` services

Note that if a service is found to be *not* registered, the Registry responds with a Registry-specific error message.



Description
 A sequence diagram is a type of interaction diagram because it describes how-and in what order-a group of objects works together. This sequence diagram shows the process of scheduling an event.

To customize this template, click on any shape and type the information you would like to include. Rearrange and add shapes used as needed. **OR** automatically create your sequence diagram by using the markup feature.

Sequence Diagram Tutorials
 (Hold Shift + ⌘ or Ctrl, then click)

- [Read our UML blog post](#)
- [Visit our UML sequence markup help center](#)
- [Read our UML sequence diagram page](#)
- [Learn how to make a UML sequence diagram](#)
- [Learn how to automatically create UML sequence diagrams](#)
- [Watch Lucidchart basic tutorials](#)