



PROJECT AIR™

Intelligent insights from device to boardroom

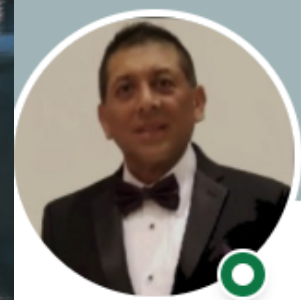
EdgeX Forum

Marcelo Gallardo, Principal Architect – Office of the CTO

Jesús Centeno, Head Product Evangelist – Office of the CTO

November 13th, 2020

Prepared TIBCO LABS™



CONFIDENTIALITY & DISCLAIMER

The information in this document is confidential information of TIBCO Software Inc. and/or its affiliates. Use, duplication, transmission, or republication for any purpose without the prior written consent of TIBCO is expressly prohibited.

This document (including, without limitation, any product roadmap or statement of direction data) illustrates the planned testing, release and availability dates for TIBCO products and services. This document is provided for informational purposes only and its contents are subject to change without notice. TIBCO makes no warranties, express or implied, in or relating to this document or any information in it, including, without limitation, that this document, or any information in it, is error-free or meets any conditions of merchantability or fitness for a particular purpose.

The material provided is for informational purposes only, and should not be relied on in making a purchasing decision. The information is not a commitment, promise or legal obligation to deliver any material, code, or functionality. The development, release, and timing of any features or functionality described for our products remains at our sole discretion.

During the course of this presentation, TIBCO or its representatives may make forward-looking statements regarding future events, TIBCO's future results or our future financial performance. These statements are based on management's current expectations. Although we believe that the expectations reflected in the forward-looking statements contained in this presentation are reasonable, these expectations or any such forward-looking statements could prove to be incorrect and actual results or financial performance could differ materially from those stated herein. TIBCO does not undertake to update any forward-looking statement that may be made from time to time or on its behalf.

A GLOBALLY TRUSTED PARTNER

- 21 of the top 25 Global 2000
- 10 of the top 10 Semiconductor Manufacturers
- 8 of the top 10 Pharmaceuticals
- 7 of the top 10 Banks
- 7 of the top 10 Food & Beverage Processors
- 6 of the top 10 Global Airlines
- 6 of the top 10 Telecoms



TIBCO CONNECTED INTELLIGENCE



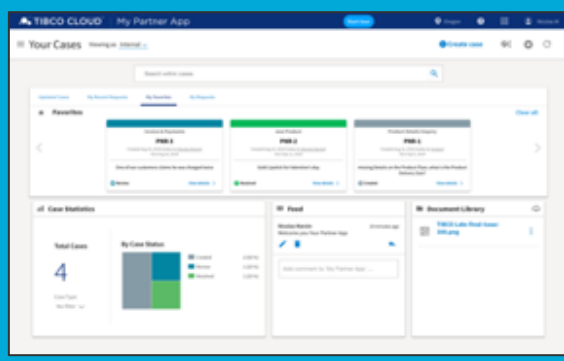
TIBCO makes it possible to unlock the potential of real-time data for making faster, smarter decisions.

TIBCO LABS™: Continuous Innovation



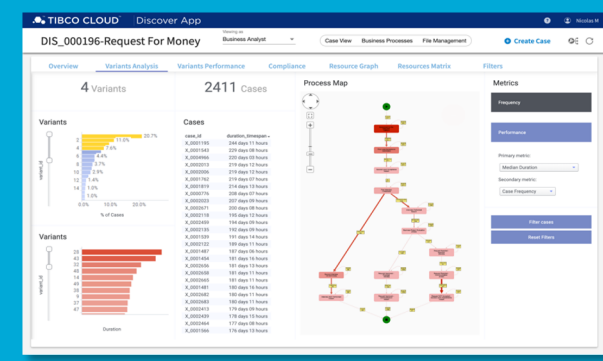
Cloud Starters

Quickly build native cloud applications



Discover

Discover business processes from operational data



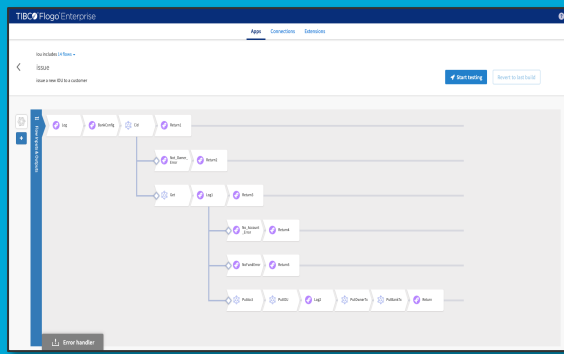
Cloud Conversations

Have a conversation with your enterprise data



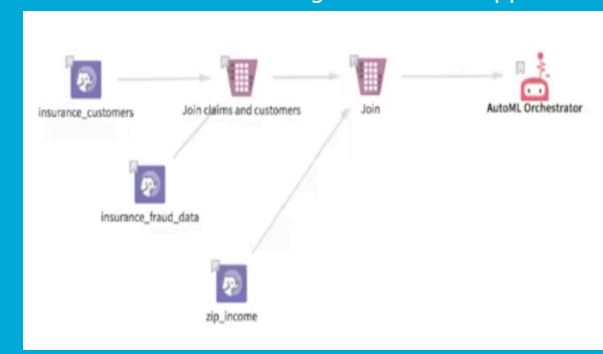
Dovetail

Make blockchain smart contracts smarter



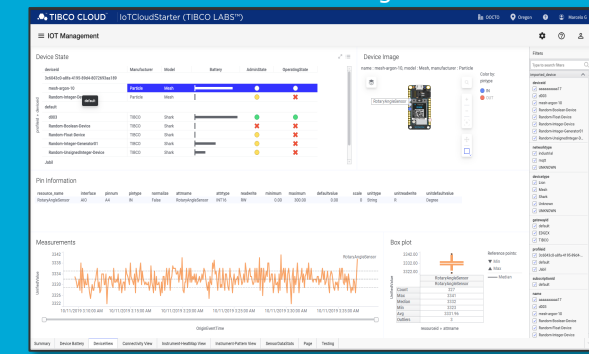
Auto ML for Data Science

Auto ML workflows for the generation of applications



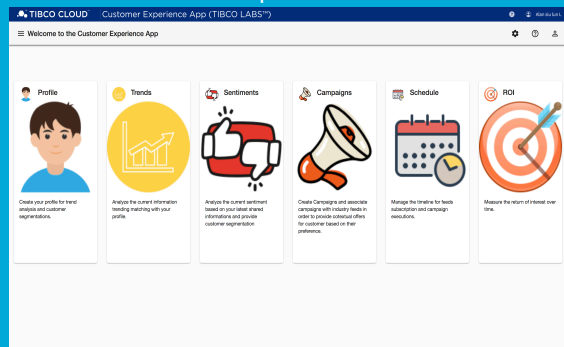
AIR

Streamline IoT from the edge to the cloud



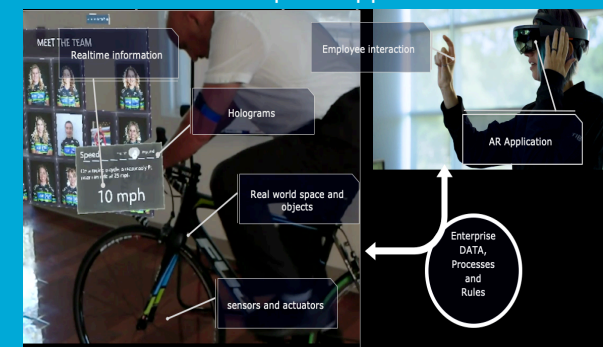
Journey

Engage with customers in new ways and exceed all expectations



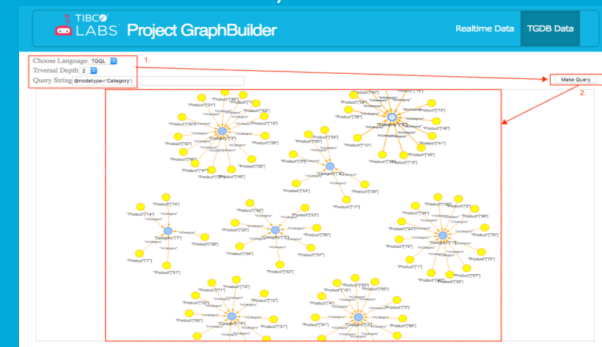
ART

Augmented Reality (AR) with real time data for enterprise apps



GraphBuilder

Construct graph entities to leverage relationships in your data

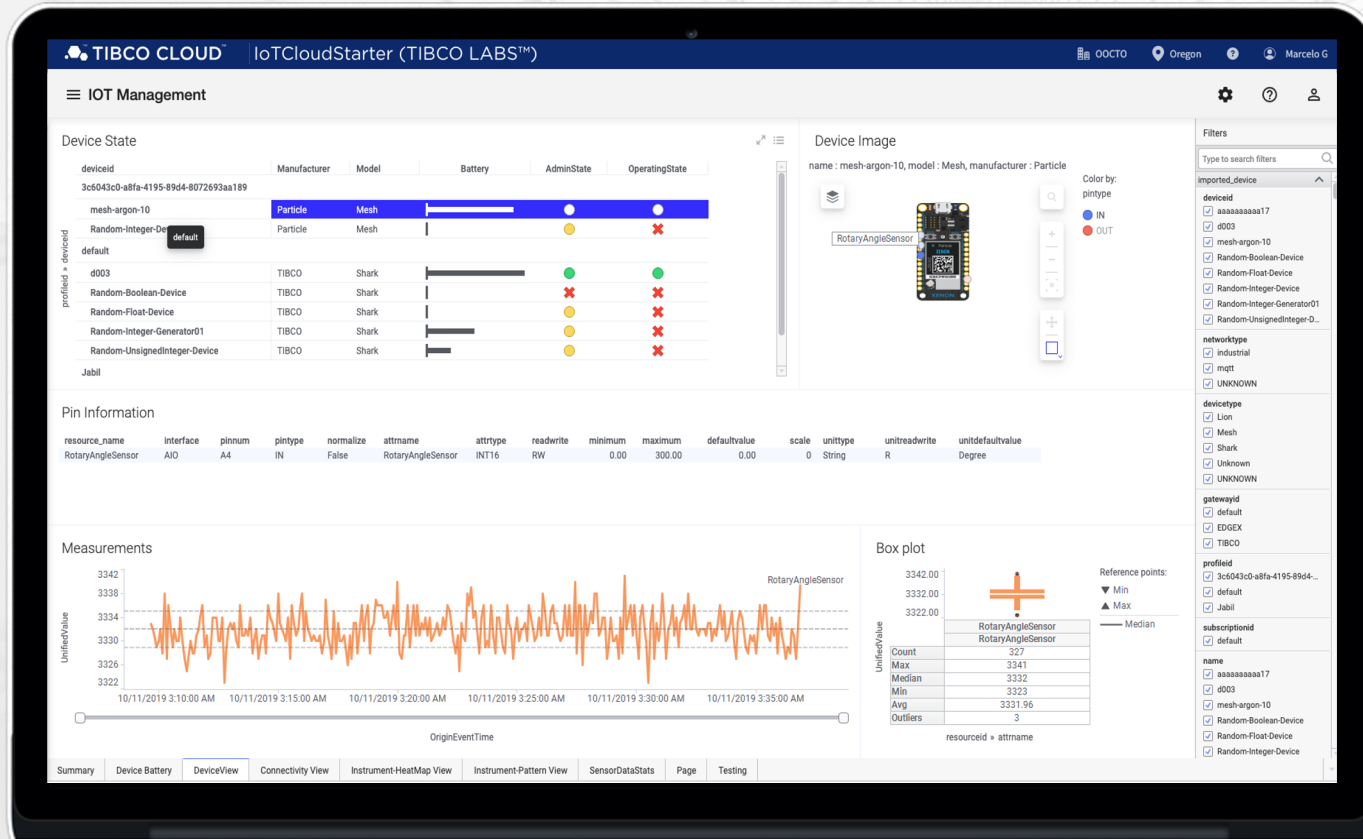


What comes to your mind when you think **IoT?**



TIBCO LABS™ Project AIR™

Intelligent insight from device to boardroom



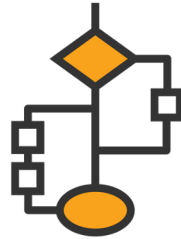
- **Register and interact** with IoT devices (gateways, edge devices, sensors, etc.).
- **Process IoT derived data** anywhere it is needed (at the edge, gateway, data center/cloud, etc.).
- **Agnostic approach** to select any cloud provider and edge device while leveraging open source technologies.
- **Own, analyze and store** IoT data as needed.
- **Extensibility in every layer** for easy integration with other platforms.

Template that customers can take and extend

Project AIR™ Capabilities



Connect and extract IoT data for processing



Create triggers to respond to IoT events



Data management



Feed into long term / Big Data repositories for historical analysis



Visualize and explore IoT data



Monitor, measure and react to IoT events via a customizable UX



Combine IoT data with AI/ML models



Ability to map various end points within the organization

Enterprise Use Cases Across Industries

CONNECTED VEHICLES

Automation of normal driving tasks to improve safety and reduce number of vehicles.

TELEMETRY

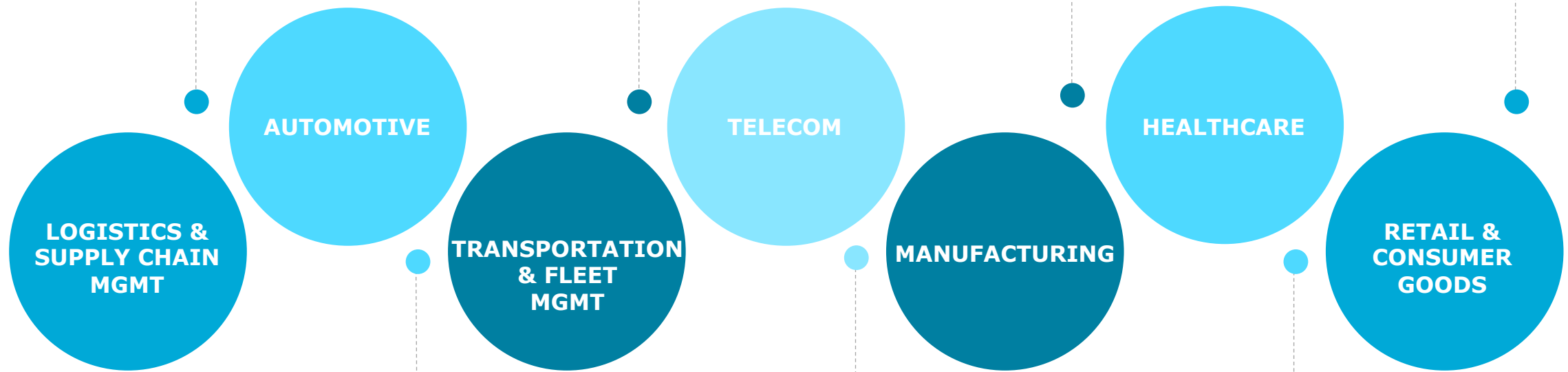
Deploy active fleet management systems to minimize risks associated with vehicle investment, improving efficiency and productivity while reducing costs.

COMPLIANCE

Use IoT data to gain analytical insights on your customers, internal operations and business processes so you can adjust as needed and comply with industry specific regulations.

AUTOMATION

Leverage sensors and cameras in combination with event/rule based engines to automate a sequence of steps in various business processes.



MACHINE LEARNING AT THE EDGE

Incorporating ML algorithms at the edge for real time decision making process and integrate/process all kinds of data feeds including feeds like Computer Vision for anomaly detection and preventive maintenance

PREDICTIVE MAINTENANCE

By leveraging sensors, cameras and analytics, smart factories can reduce failures by automatically creating maintenance timelines, improve strategic planning capabilities and capitalize on cost savings.

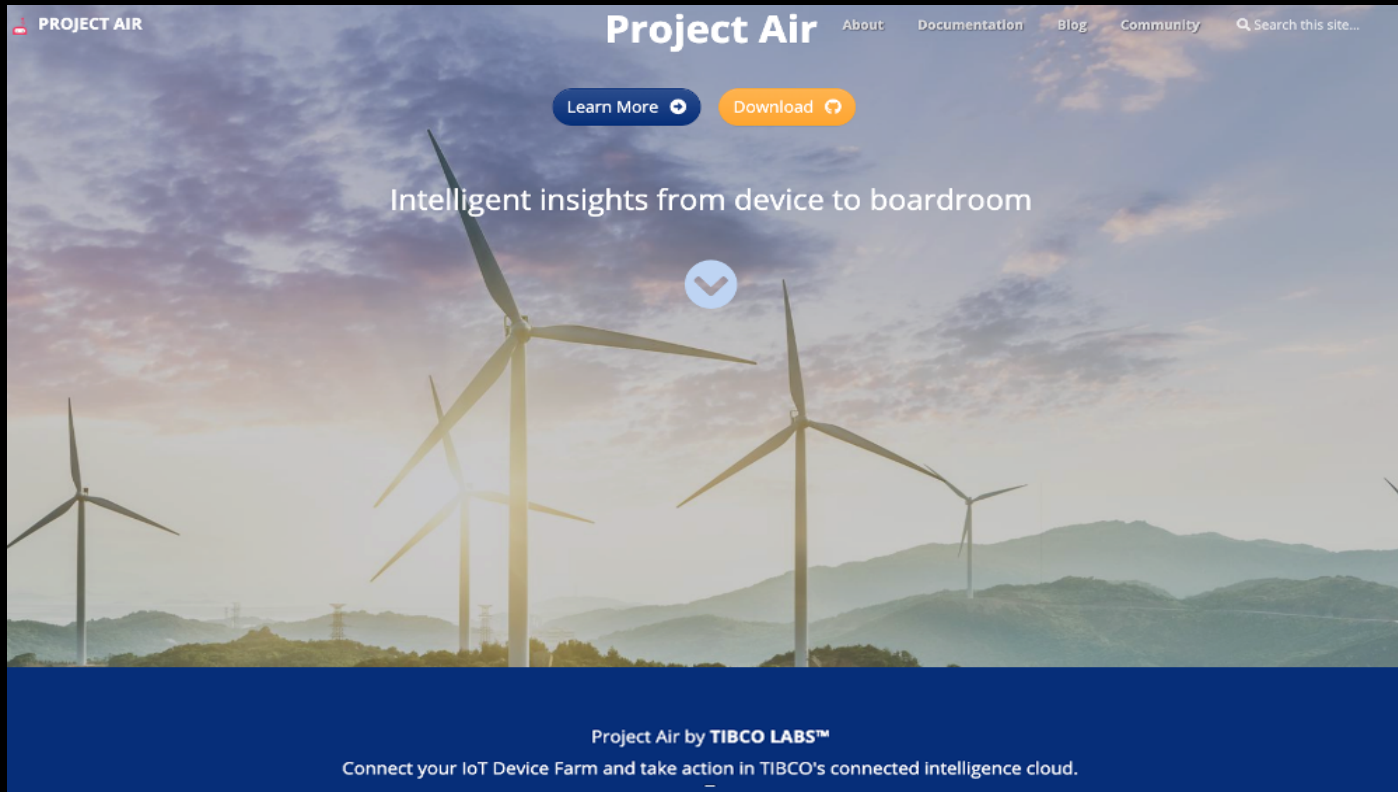
SMART METERING

Understand when and how many resources are consumed to achieve goal levels of energy efficiency and savings while reducing operational expenses by automating manual tasks.

ASSET TRACKING

Easily locate and monitor key assets to optimize logistics, maintain inventory levels, prevent quality issues and improve theft detection.

Available Resources



TIBCO LABS™ page

<https://www.tibco.com/tibco-labs>

GitHub

<https://github.com/TIBCOSoftware/labs-air/>

TIBCO Community

<https://community.tibco.com>

Contact Us

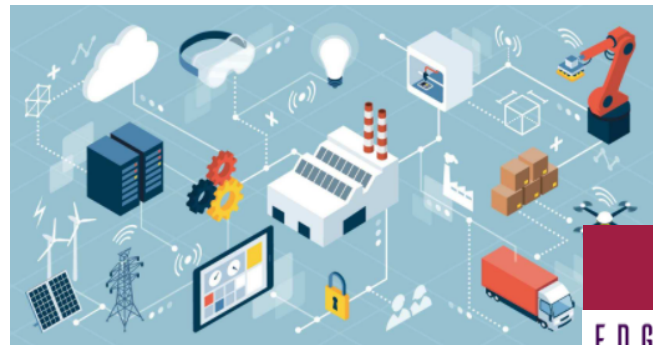
tibcolabs@tibco.com

Project AIR™ Functional Components (Demo)

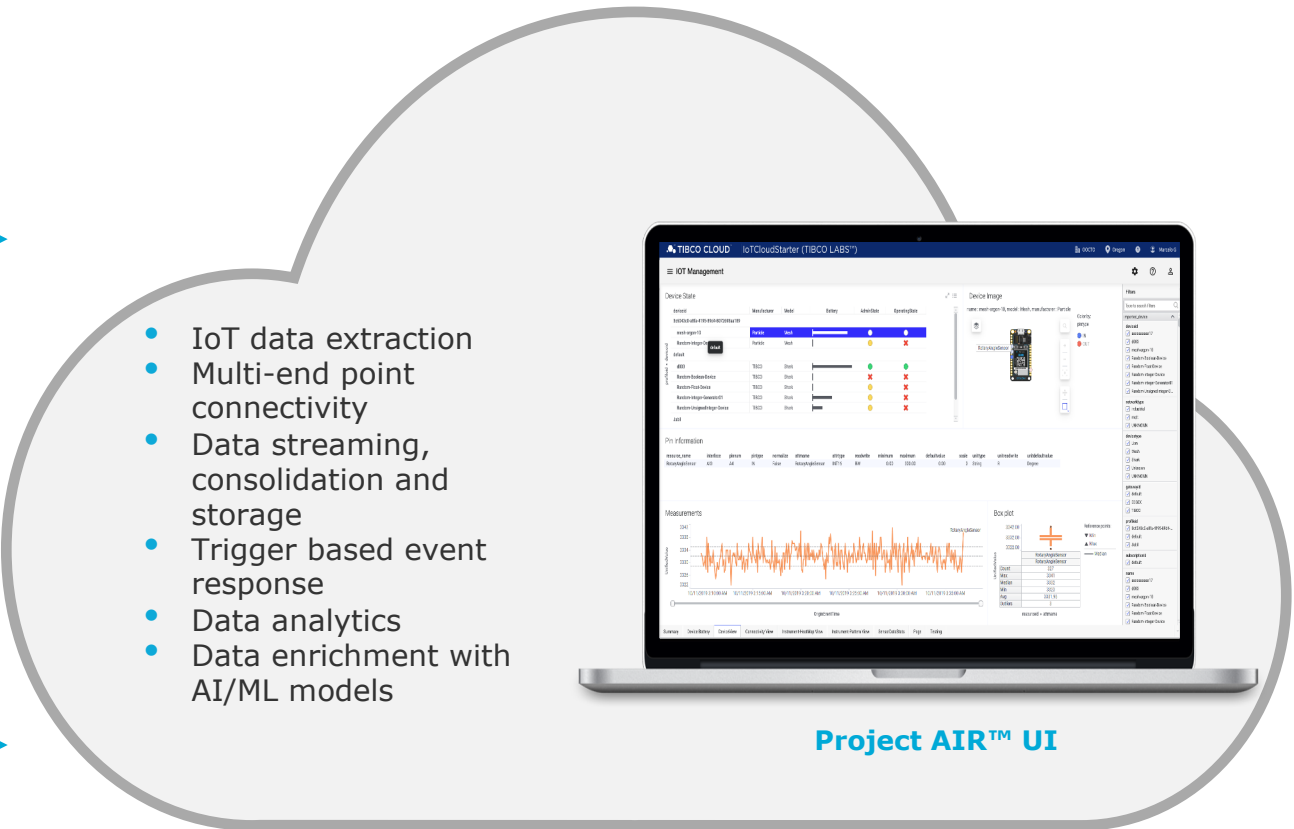
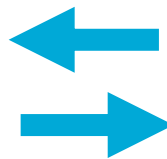
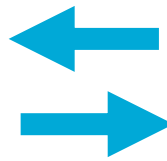
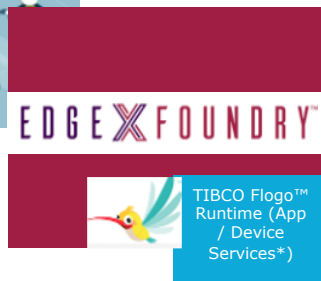
← Project AIR™ →



Home Devices



Remote Devices



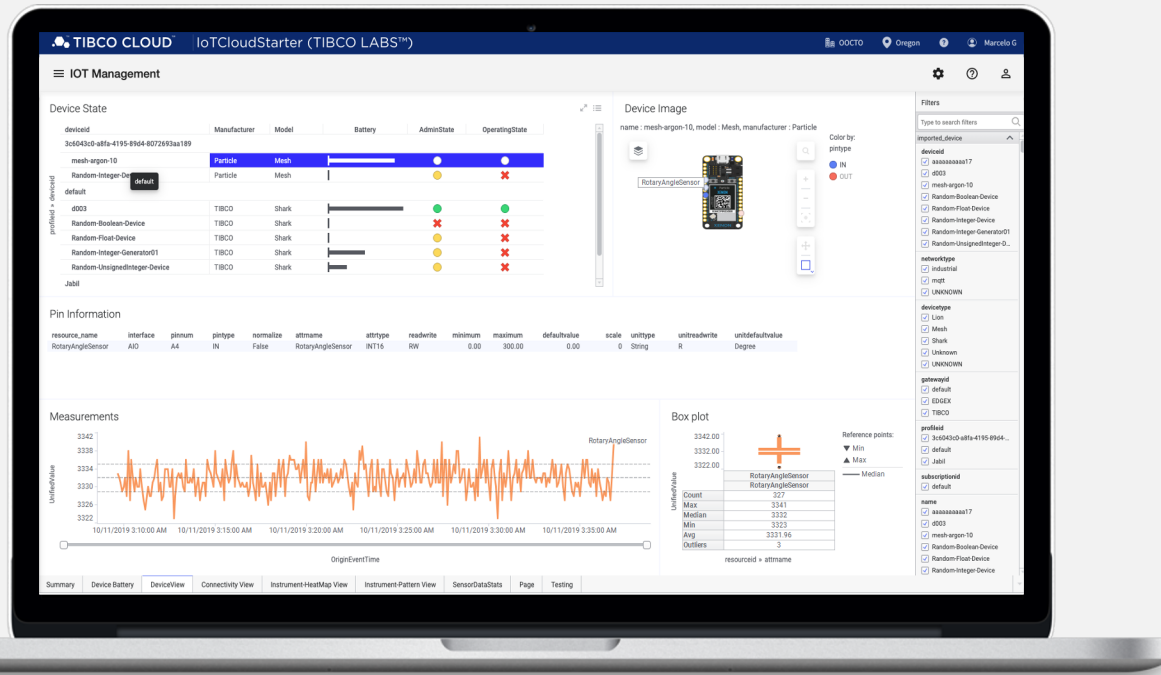
- IoT data extraction
- Multi-end point connectivity
- Data streaming, consolidation and storage
- Trigger based event response
- Data analytics
- Data enrichment with AI/ML models

Project AIR™ UI



IoT Distributed Architecture

Project AIR™ Summary



Template that customers can take and extend

Register and interact with IoT devices (gateways, edge devices, sensors, etc.) and **process IoT derived data** anywhere you need.

Business Value:

- **Automation and cost savings**
- **Risk reduction and visibility**
- **Active customer engagement**
- **Improved workflow and automated commerce**