



EDGE X FOUNDRY™

EdgeX Planning Conference (virtual meeting)

Kamakura Release

Nov 1-4, 2021

Conference Agenda

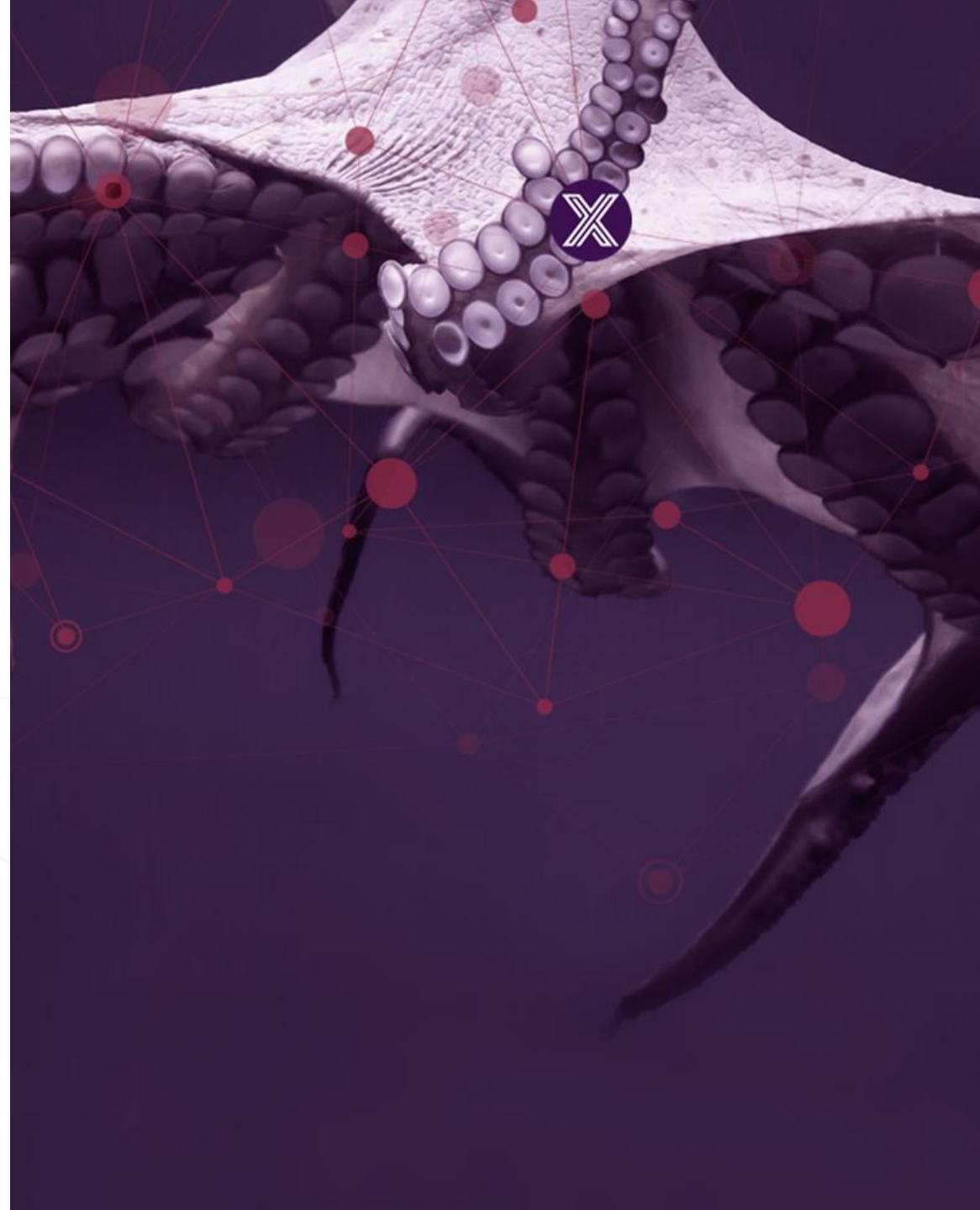
- Nov 1, Monday, 7am
 - Business Topics
 - Architectural Tee-up
- Nov 2, Tuesday, 10am
 - Cadence & Process
 - Architectural issues
- Nov 3, Wednesday, 7am
 - Kamakura Scoping
- Nov 4, Thursday, 10am
 - Finish scoping and architectural issues
 - Jakarta lessons learned
 - Long term road mapping
- Nov 5, Friday, 8am
 - Unconference & Training

All times in
PDT



Intros

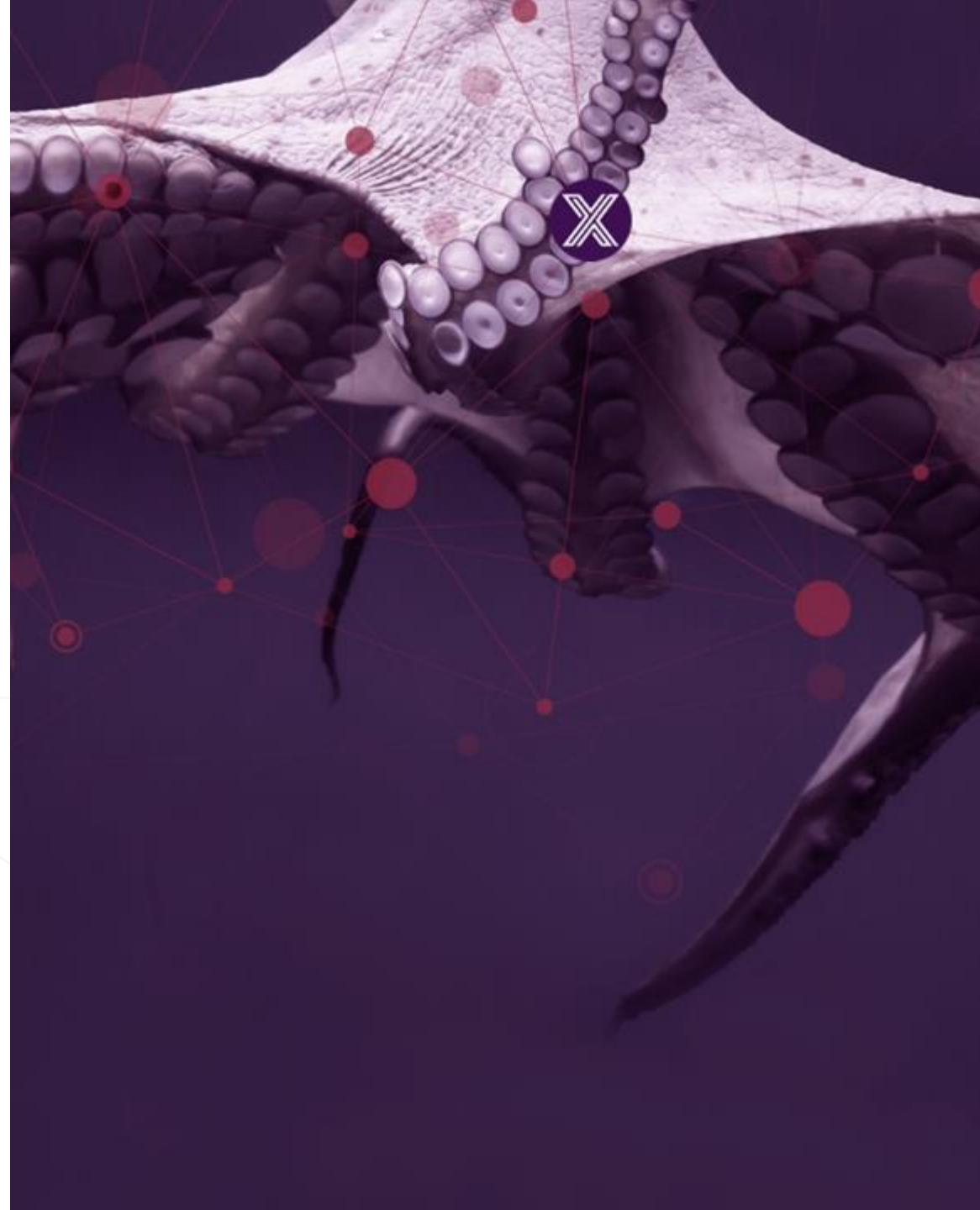
Name, rank, serial number please



EDGE X FOUNDRY™

Day 1

Nov 1



Conference Agenda – Day 1

- Nov 1, Monday (all times in PDT; all times tentative and fluid)
- 7am PDT Introductions & Logistics
- 7:15am Kamakura release
- 7:30am Business Topics
- 9:00am Architecture topic tee-up
- 11am day 1 adjourn

Kamakura Release

- Version 2.2?
 - Must still be backward compatible
 - Can add, but not remove deprecated items yet
 - Not LTS, but must consider we have LTS now on the books
- Major additions under consideration
 - North to south message bus
 - App service to command to start??
 - Metrics (per ADR)
 - UoM
 - Record and replay DS
 - Better (native) Windows support

Business Topic Agenda

- Web Site (Andy/Gavin & Melvin on China site)
 - Website funding
 - Stats from Chinese site
- Developer Evangelism (Rodney/Jim)
 - EdgeX Ready
 - Developer Badging
 - EdgeX Smart * Challenge 2020
- Project and community offering promotion
 - EdgeX Certified
- Vertical Solutions and Liaison
 - Adopter Series

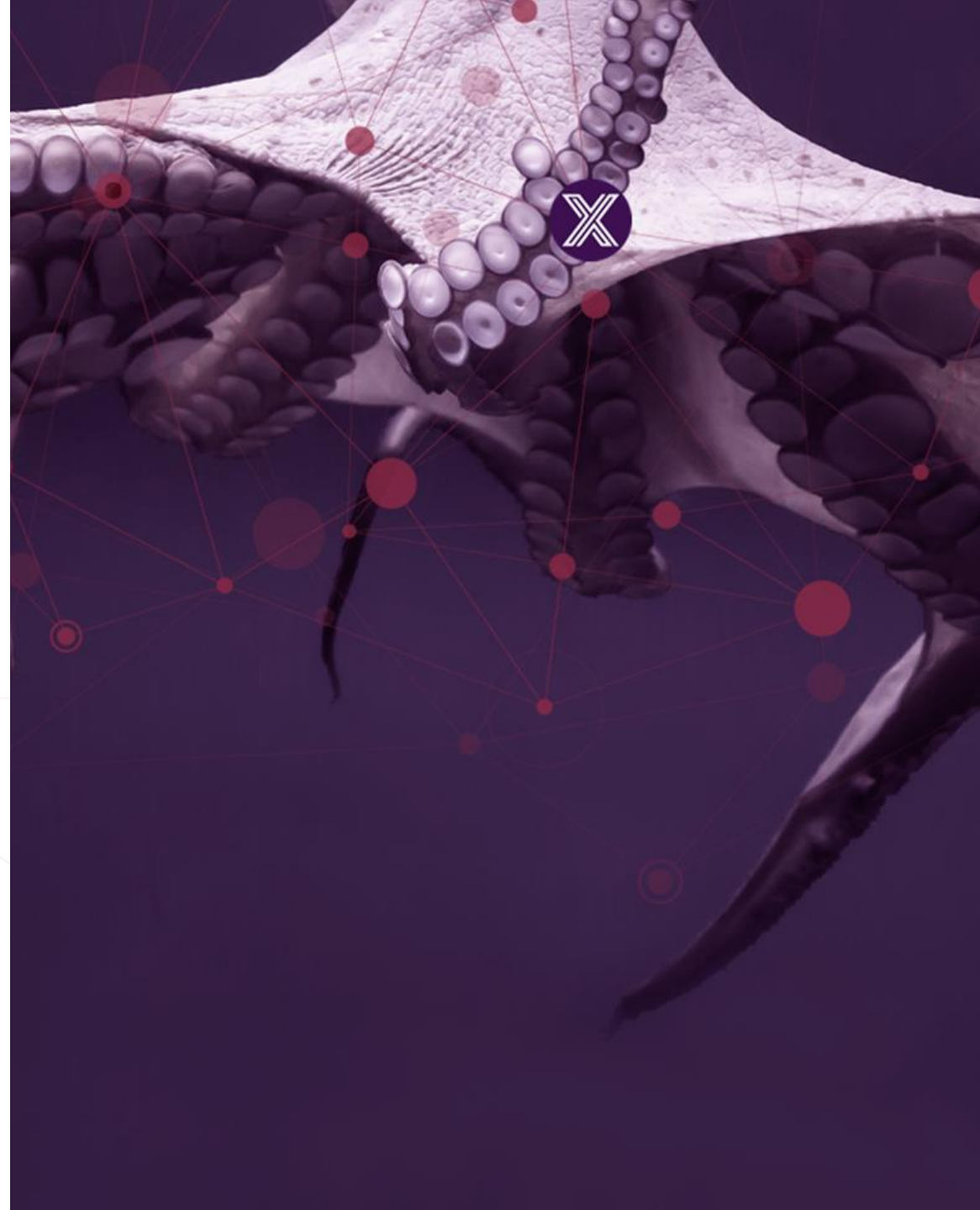


Outreach

- EdgeX badging – trial and eval in 2022
- EdgeX Ready – eval by early 2022
- EdgeX Certified – on hold
- Regular Web site and download stats production
- Hackathon (English)
- Regular blog/vlog posts
- Adopter series – time to make it ad hoc

EDGE X FOUNDRY™

Architecture Tee Up



Kamakura Major Themes and Objectives

- Dot release
- Major additions under consideration
 - North to south message bus
 - App service to command to start??
 - Metrics (per ADR)
 - UoM
 - Record and replay DS
 - Better (native) Windows support



Scoping

- Categories used in our pre-wire
 - In scope
 - It is “In scope” – must be done; no debate; near unanimous consent
 - Only discussion is what will be completed in this release
 - Under consideration
 - It is not in scope yet, but it worthy of some time to discuss
 - A strong tendency to put it in scope; in scope by default if not reviewed or decided
 - Has a majority of support to at least consider it; must be put in or out of scope at the end of the meeting
 - Not sure/On the fence
 - There are some that believe it should be under consideration or in scope but others are unsure or even against it.
 - To be reviewed and debated during the planning meeting as time permits; placed out of scope by default if not covered in the planning meeting
 - **Out of scope**
 - Not being discussed in this meeting

Architect's Topics list

- In scope

- Dynamic profiles (ADR)
- Metrics collection (ADR)
 - Control plane events too?
- UoM implementation (ADR)
- Tracking project decisions (small to the large)
 - To be discussed in full on Monday time permitting

- Under Consideration

- North-South message bus
 - Allow cloud or north side system to message command
 - Allow command to message device services
- Moving Command API into Metadata service
- K8s what's next
- Things provisioning
 - More autonomous
 - Better device services

- Windows Support

- ZMQ prohibits native support (how to provide option to remove ZMQ)
- Package support (MSI)

- REST/SOAP inside a device service

- Global configuration

- Remove duplication across configuration

- On the fence

- Reducing EdgeX Size

- Research only this release

- Getting rid of SMA (already deprecated)

- What replaces start/stop/continue, config, service metrics

- Expand notifications

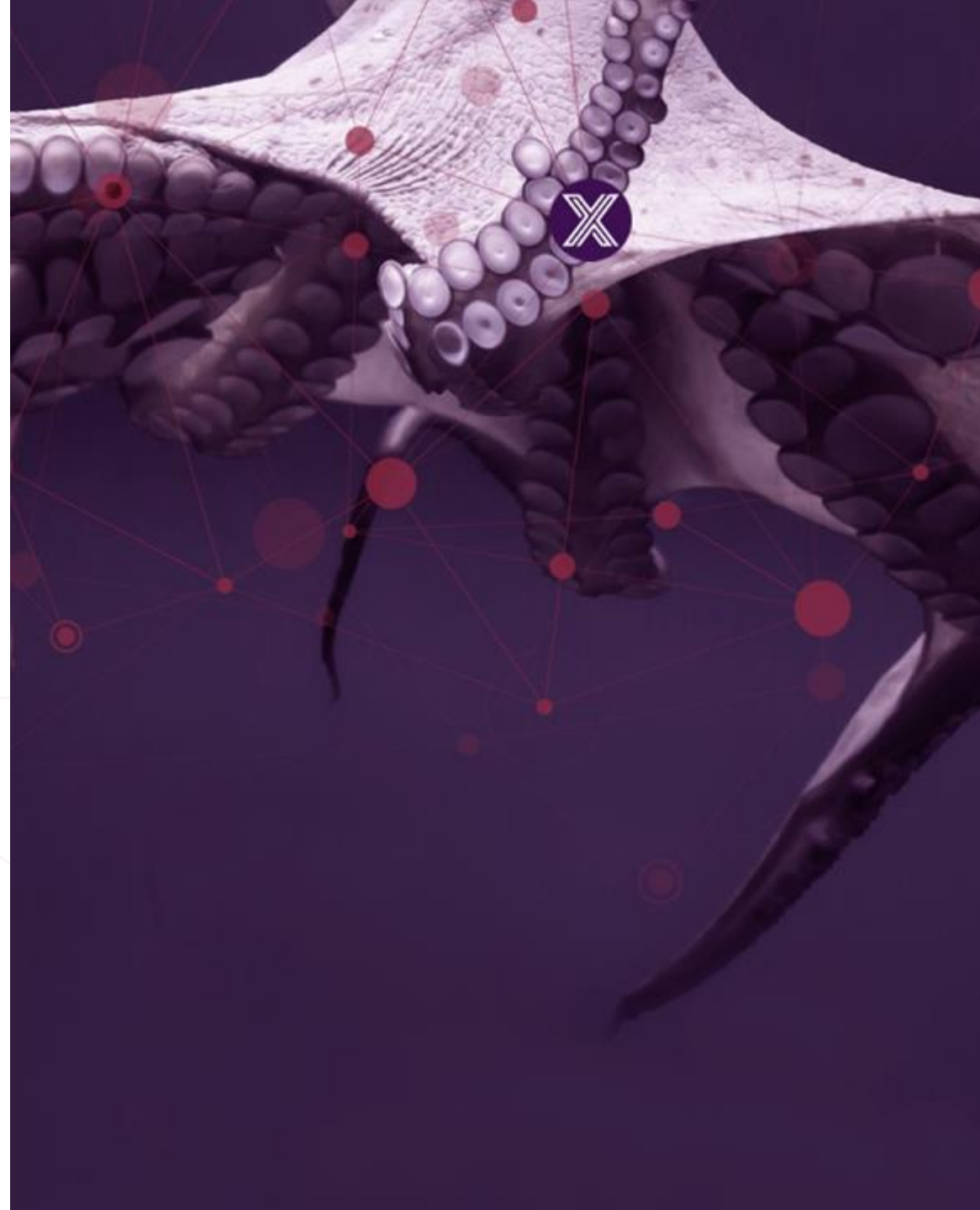
- Allow other protocols (SMS, messages, websockets)
- Alarm based on metrics/resource usage

Details in slides for Day 2

EDGE X FOUNDRY™

Day 2

Nov 2

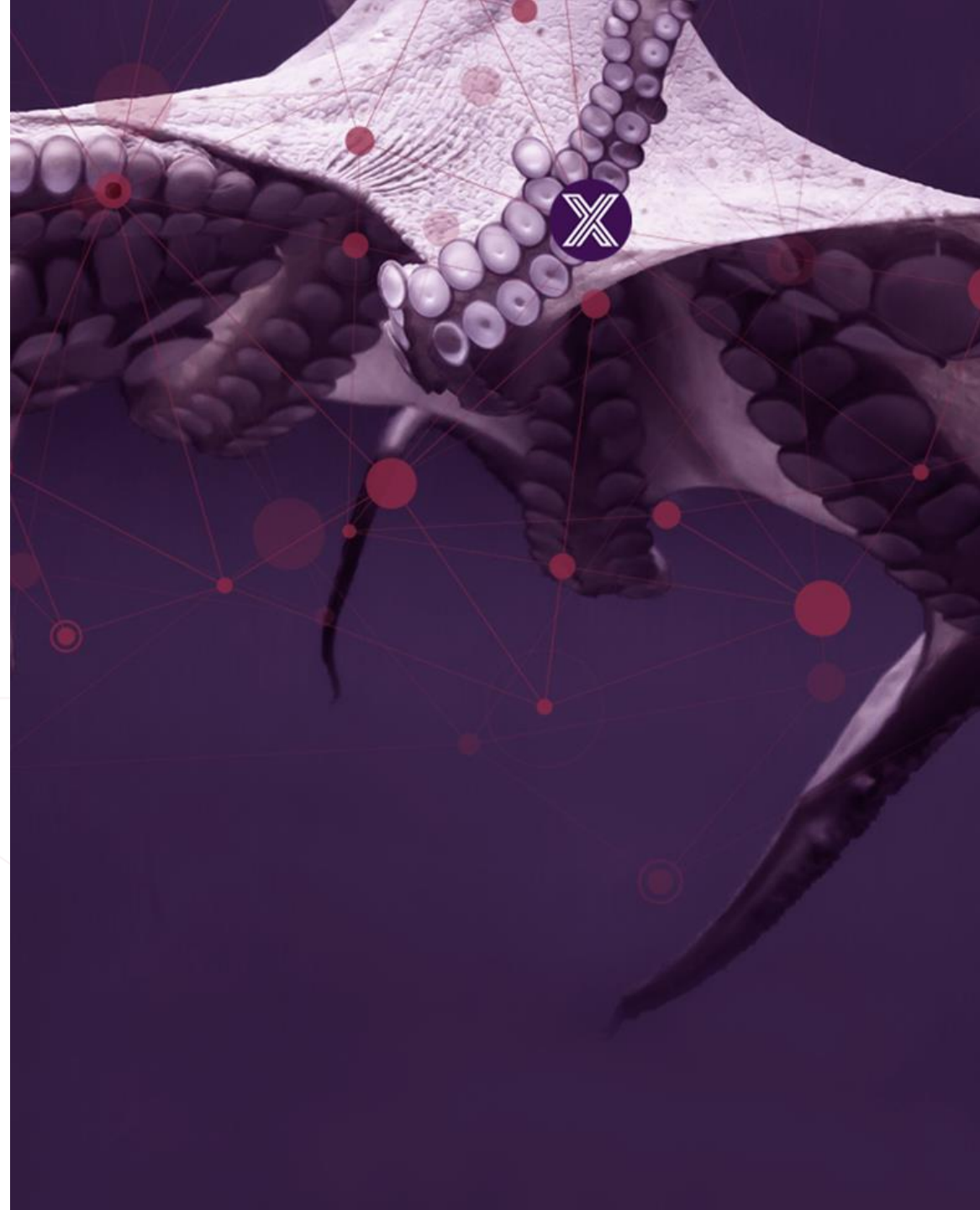


Conference Agenda – Day 2

- Nov 2, Tuesday (all times in PDT; all times tentative and fluid)
- 10am PDT Meeting Start
- 10:15am Release cadence check & release naming
- 11am Architecture topics discussion and decisions
 - Topics relevant to upcoming release having priority, discussion of architectural design - with goal of making decisions that are particularly relevant and impactful to upcoming release
- With any remaining time, we will start to explore Kamakura scope
- 1pm day 2 adjourn



Cadence & Release Naming



Cadence Check

- April & Oct/Nov remain target release months
 - Kamakura release – May 2022
 - Levski release – Oct 2022
 - Minnesota release – May 2023
 - N release – Oct 2023
- Venue for next F2F Meeting (April 2022)
 - With travel restrictions lifted – everyone in favor of a F2F
 - Volunteers, suggestions on where to hold this meeting?
- Conferences – marketing committee update
 - Per Outreach planning, looking at mid-2022
 - On hold for now

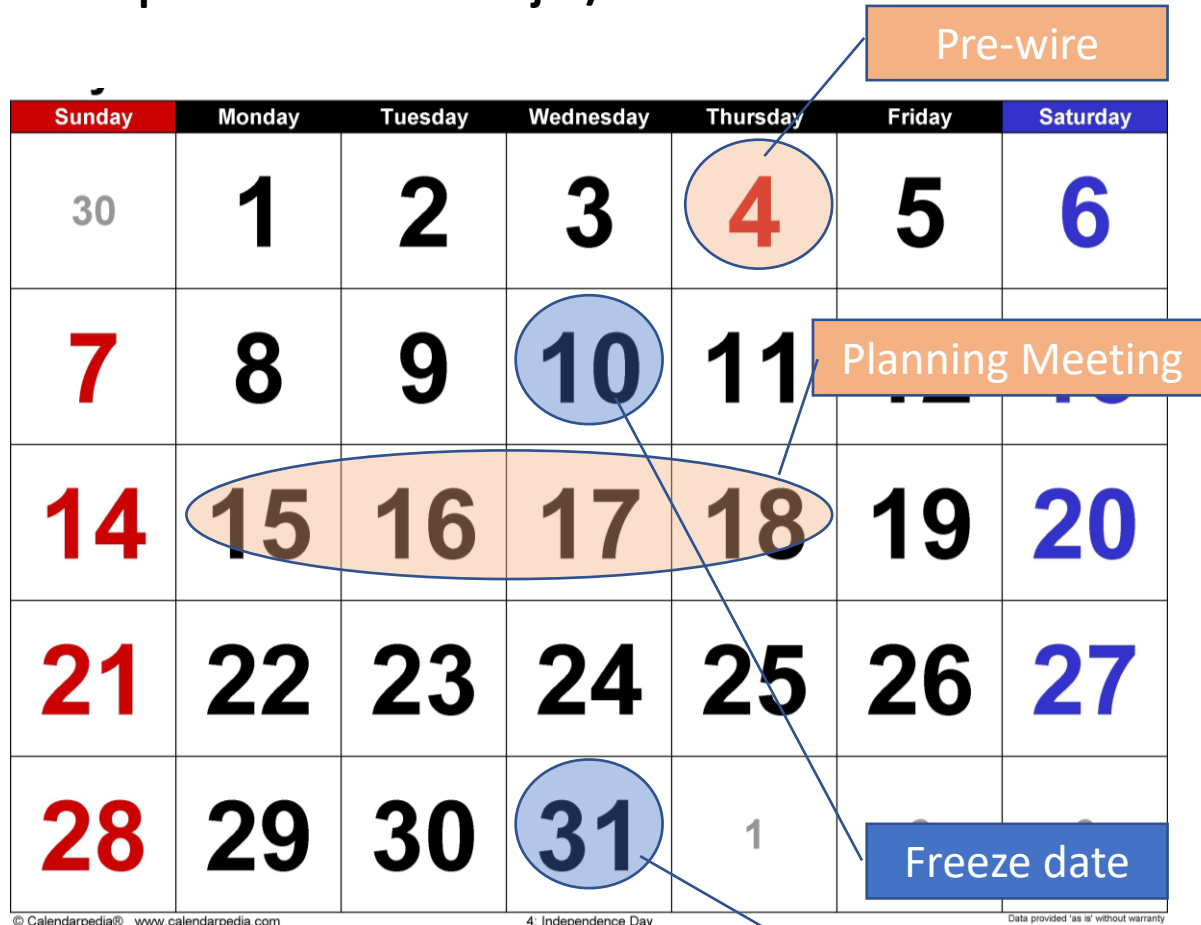


Release Detail Timing

- Given circumstances of the last few releases, we have been flexible
 - Should we try to standardize the release timeline a bit for everyone's expectations and planning?
- Formalizing this for future releases (**Proposed**)
 - Release date selected (attempt to select 2 months in advance of release)
 - Wednesday / mid week target
 - September for fall
 - March for spring
 - Freeze date selected off the release date
 - Wednesday target to match release date
 - 3 weeks prior for substantial major release or LTS
 - 2 weeks prior for minor release
 - Planning meeting
 - Monday – Thursday virtual or Tuesday/Wednesday when in person
 - 2.5 weeks prior to a major or LTS release
 - 1.5 weeks prior to a minor release
 - Pre-wire meeting
 - Wednesday or Thursday prior to the Freeze date

Formalized Planning (Proposal)

Example Calendar for Major/LTS Release

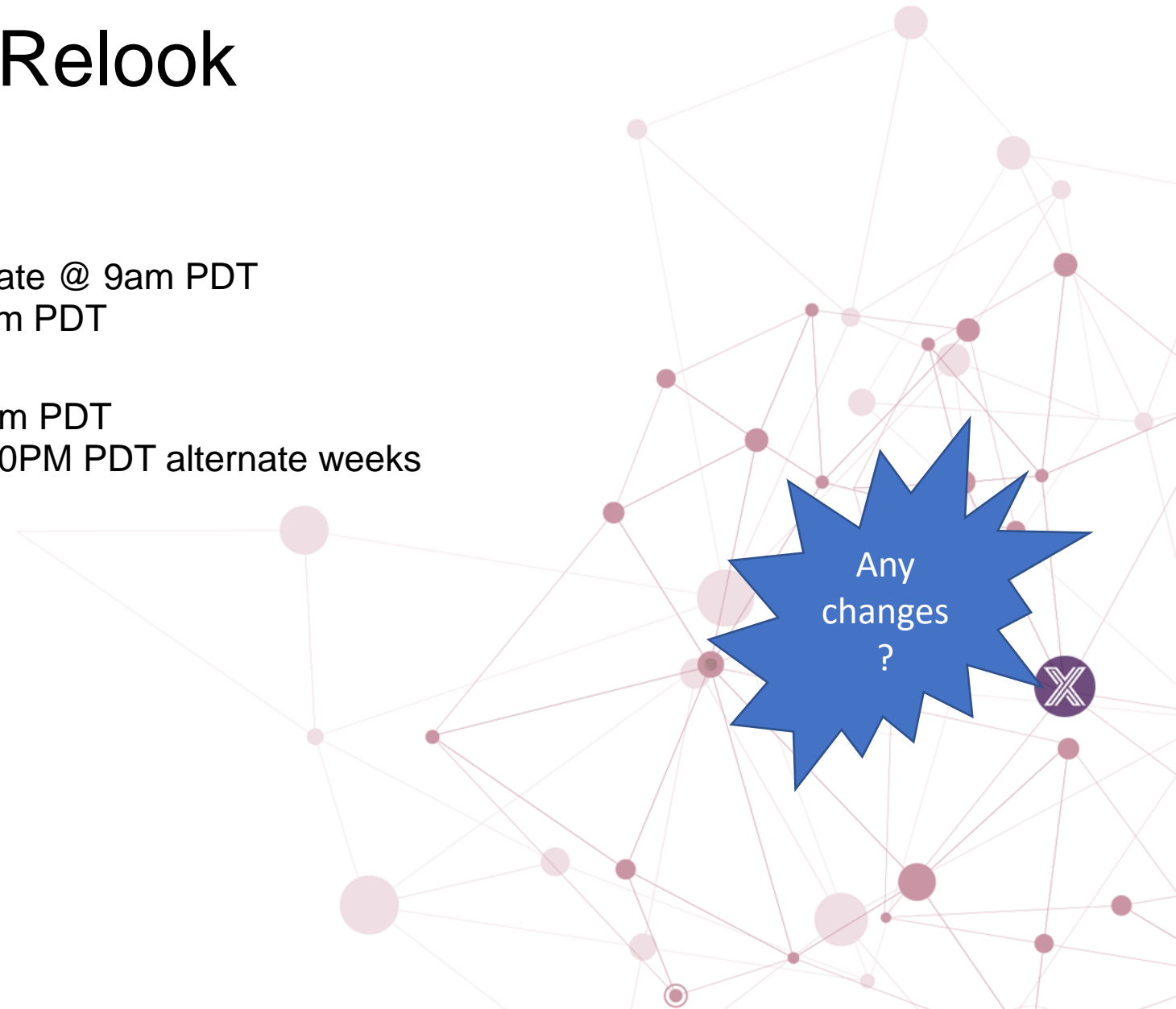


Example Calendar for Minor Release



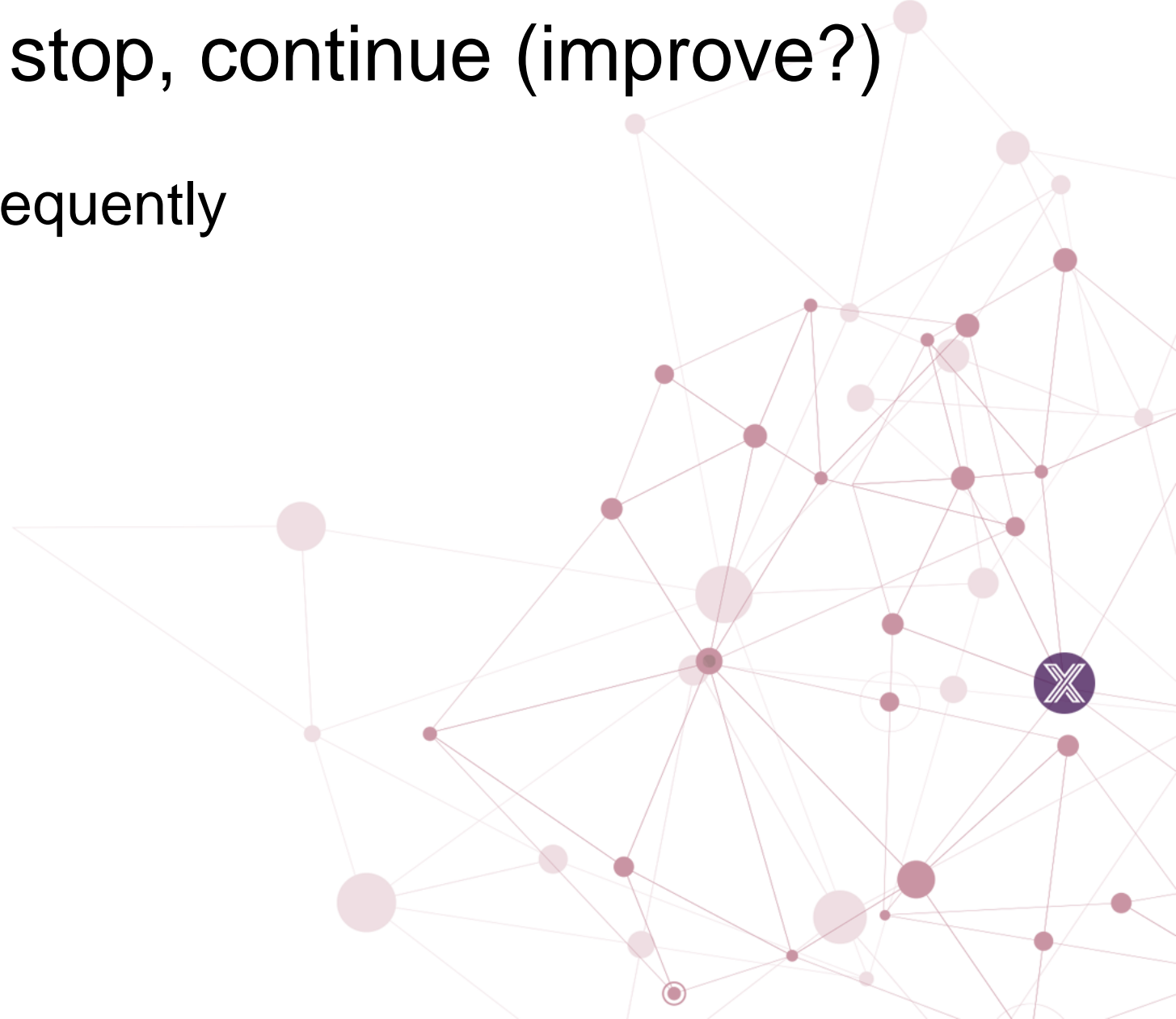
EdgeX Meeting Times Relook

- Mondays
 - Device Services @ 8am PDT
 - Certification & Outreach/Marketing alternate @ 9am PDT
 - Architect's meeting once a month @ 10am PDT
- Tuesdays
 - Occasional Adopter series meeting @ 8am PDT
 - Application Services WG @ 9am and 3:30PM PDT alternate weeks
- Wednesdays
 - TSC @ 8am PDT
 - Security @ 9am PDT
- Thursdays
 - Core @ 8am PDT
 - DevOps @ 9am PDT
- Friday
 - No meetings



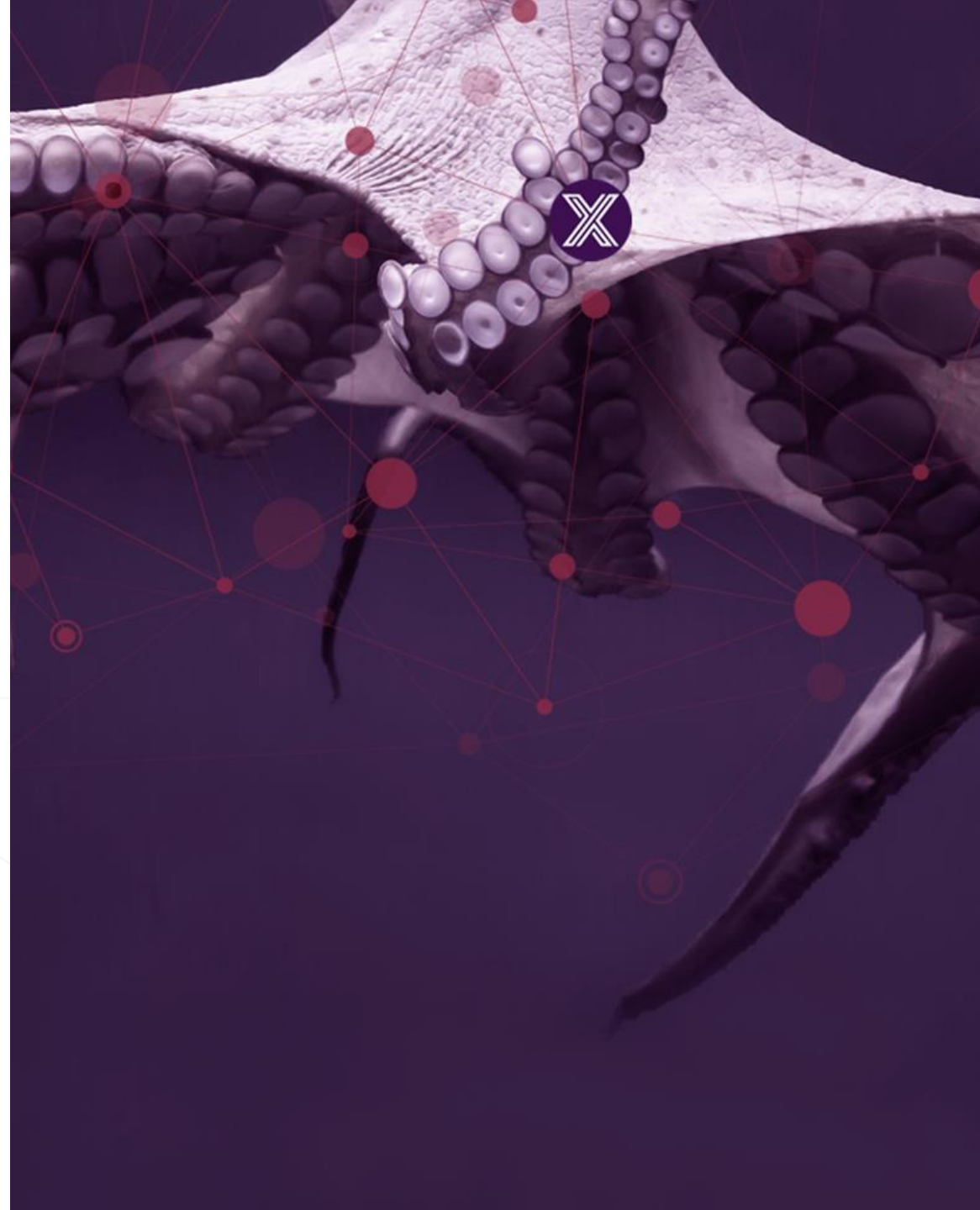
EdgeX Meetings Start, stop, continue (improve?)

- WG meetings – more/less frequently
- Monthly architect meetings
 - More/less frequent?
- Adopter Series
 - Bi-monthly?



EDGE X FOUNDRY™

Architectural Discussions/Decisions



Kamakura Major Themes and Objectives

- Version 2.2?
 - Must still be backward compatible
 - Can add, but not remove deprecated items yet
 - Not LTS, but must consider we have LTS now on the books
- Major additions under consideration
 - North to south message bus
 - App service to command to start??
 - Metrics (per ADR)
 - UoM
 - Record and replay DS
 - Better (native) Windows support

Scoping

- Categories used in our pre-wire
 - In scope
 - It is “In scope” – must be done; no debate; near unanimous consent
 - Only discussion is what will be completed in this release
 - Under consideration
 - It is not in scope yet, but it worthy of some time to discuss
 - A strong tendency to put it in scope; in scope by default if not reviewed or decided
 - Has a majority of support to at least consider it; must be put in or out of scope at the end of the meeting
 - Not sure/On the fence
 - There are some that believe it should be under consideration or in scope but others are unsure or even against it.
 - To be reviewed and debated during the planning meeting as time permits; placed out of scope by default if not covered in the planning meeting
 - **Out of scope**
 - Not being discussed in this meeting

Architect's Topics list

- In scope
 - Dynamic profiles (ADR)
 - Metrics collection (ADR)
 - Control plane events too?
 - UoM implementation (ADR)
 - Tracking project decisions (small to the large)
- Under Consideration
 - North-South message bus
 - Allow cloud or north side system to message command
 - Allow command to message device services
 - Moving Command API into Metadata service
 - K8s what's next
 - Things provisioning
 - More autonomous
 - Better device services

- Windows Support
 - ZMQ prohibits native support (how to provide option to remove ZMQ)
 - Package support (MSI)
- REST/SOAP inside a device service
- Global configuration
 - Remove duplication across configuration

- On the fence
 - Reducing EdgeX Size
 - Research only this release
 - Getting rid of SMA (already deprecated)
 - What replaces start/stop/continue, config, service metrics
 - Expand notifications
 - Allow other protocols (SMS, messages, websockets)
 - Alarm based on metrics/resource usage

In Scope

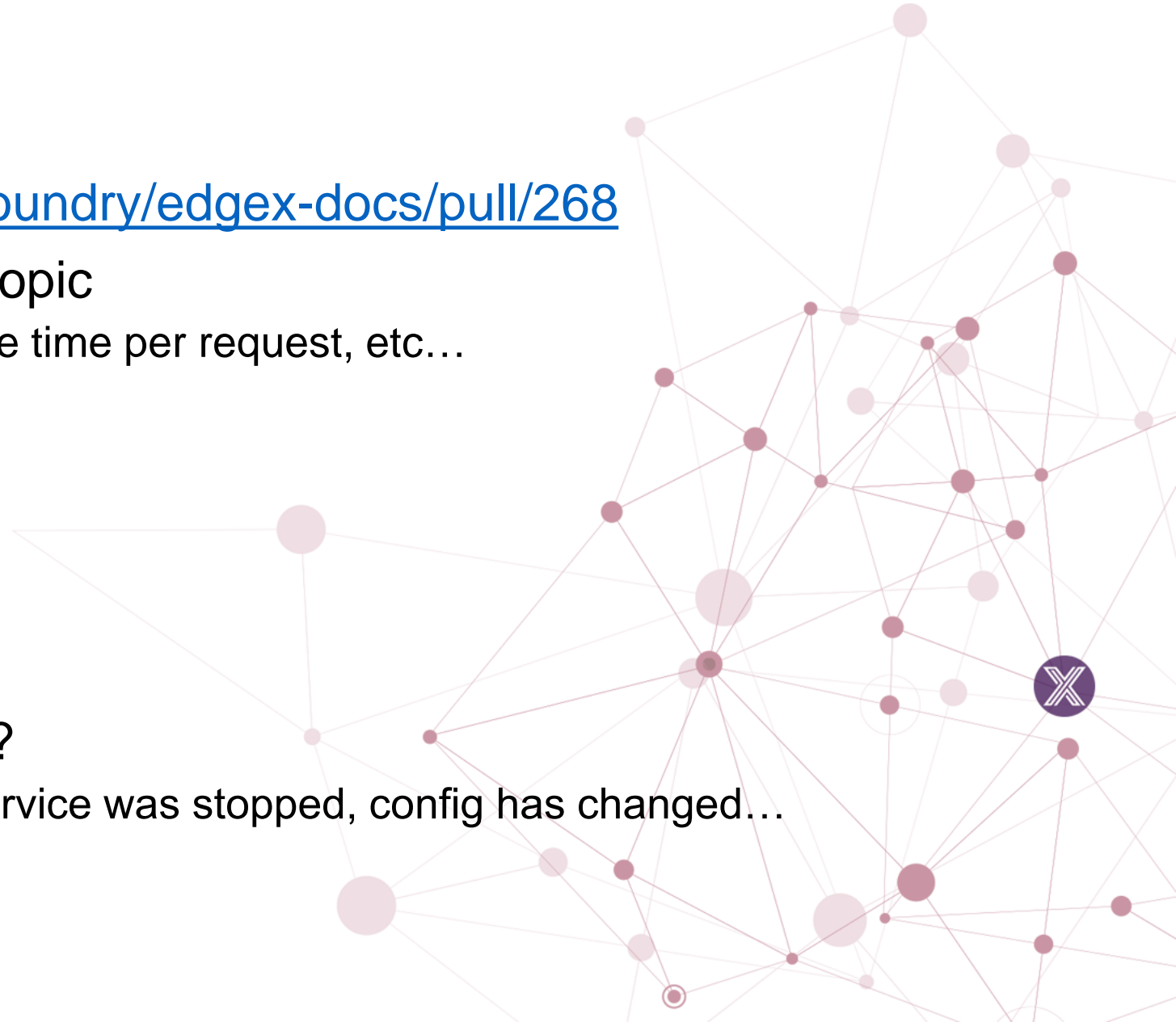


Dynamic Profiles

- ADR - <https://github.com/edgexfoundry/edgex-docs/pull/605>
- What do we allow to be added, removed, updated on profiles (and their associations) once system is running
 - Adding easier than allowing updates/removals
- Needs to be enforced across the system
 - CLI, GUI, APIs, etc.
- Probably need at least a design during this release

Metrics Collection

- ADR - <https://github.com/edgexfoundry/edgex-docs/pull/268>
- Each service to send metrics to topic
 - Ex: number of events sent, average time per request, etc...
- How to implement
 - Go metrics, other package
 - Impact to C services
- Considerations
 - Impact to size
- Also need control plane events??
 - Ex: a device was provisioned, a service was stopped, config has changed...



UoM

- ADR - <https://github.com/edgexfoundry/edgex-docs/pull/386>
- Can't find a spec that is universally used
- Allow for adopter to specify but add to UoM to event/readings
- Validation - later

Tracking project decisions

- ADR has been used (successfully?) for large stuff
- What about all the smaller and project decisions by WGs?
- Project is losing track
 - PR process is too heavy to submit for all decisions
 - Needs to be accessible by everyone
 - Needs to be quick to update
- For reference: Kubernetes
 - <https://github.com/kubernetes/community/blob/master/signature-architecture/README.md>

Under consideration

In scope by default



North-South message bus

- We've successfully implemented the ability to send sensor data from south to north via message bus
- No way to send requests from north to south in message bus
- Message bus provides means for:
 - Guaranteed delivery and better QoS where needed
 - Messaging preferred in many use cases
- Would require (and could be done in phases)
 - Command service to receive and relay messages
 - DS to receive/process messages
- Other questions
 - Would AS need message bus acknowledgement
 - Rules engine to call message bus or REST option?
 - What about other services using message bus (support)

Moving Command API into Metadata service

- Command API is tiny
 - Doesn't have its own DB anymore
- Reasons for it to still exist (future needs)
 - Allow for more/tighter access control
 - Control who has access to critical actuation
 - Allow for multiple actuation needs
 - Fire commands across device services
 - Fire many commands at one time
 - Allow for command transactions

Kubernetes

- What's next?
- We have an example
- In the past we had a helm chart example
- Intel members say “can't run EdgeX in K8s”
 - How can we get more (services) of EdgeX running in K8s
 - What's blocking from running all of EdgeX in K8s?
 - Why and why is not in a form that most in K8s field accept?
 - Expectation of scalability – how do we address?

Things Provisioning

- Adopters are asking for more automatic discovery/provisioning
 - “Zero touch” provisioning
- How can we improve and simplify the discovery of devices?
- How can we improve and simplify the automatic provisioning of devices?
- Device configuration file is helping
- How about some tooling too?

Windows Support

- We claim platform independence
- Running natively on Windows is now nearly impossible (outside of Docker or something like WSL2)
 - ZeroMQ does not compile on Windows 10 (Mike J script broken)
- Can we keep backward compatibility but allow for no-ZMQ windows option?
- Can we provide Windows MSI for base EdgeX install (like Ubuntu Snap with everything included?)
- And do we need testing in CI/CD for Windows?

REST/SOAP inside a device service

- How should REST/SOAP communications be handled in a Device Service?
- Comes from Support object data type in both Set and Get command issue
 - <https://github.com/edgexfoundry/edgex-go/issues/3754>
- RFID/LLRP DS need similar
 - <https://github.com/edgexfoundry/device-rfid-llrp-go#data-format>
- Needs and ADR going forward

Global Configuration

- Is it time to consider some sort of global configuration?
 - We have a lot of duplication
 - Requires a lot of config to be touched when an adopter wants to change one item
 - Examples: topic name, logging
 - Turn on/off metrics collection in the future
- Difficulty – where would the configuration go?
- Considerations: with or without Consul, with or without security (and Vault)
 - Additional consideration: containerized vs non-containerized (Snaps)

On the fence

Out of scope by default



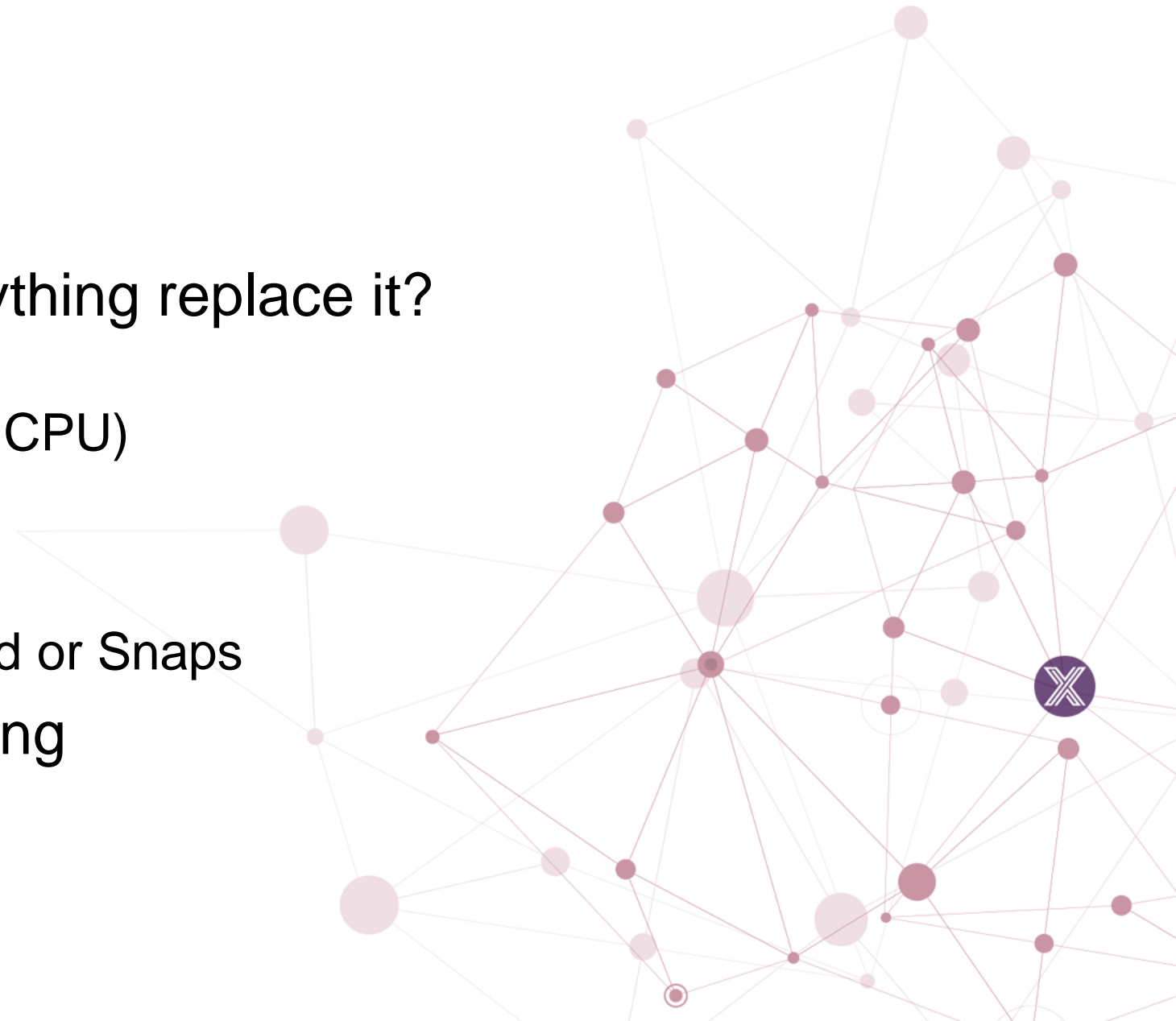
EdgeX Size Concern

- EdgeX size is getting bigger
 - Of course there is more functionality too
 - Better security – but at a price
 - Message bus support – but requires infrastructure (potentially a broker)
- EdgeX services are quite tiny, but 3rd party services are huge
 - They were created for the enterprise by enterprise experts
 - They were not meant for the edge
 - We only use a fraction (10%) of the functionality provided by these systems
- It is time to research alternatives or even consider our own implementations in some cases
 - Could we encourage 3rd party partners to develop edge specific alternate?
 - We need to be careful in creating custom security service that are not trusted
 - First rule in security – don't create your own security solutions
- Spend this release researching options

Component	Size
Consul	113MB
Kong (and its DB)	308MB
Vault	196MB
Average EdgeX service	~20MB

Deprecating SMA

- It is already deprecated
- What replaces it? Does anything replace it?
 - Start/Stop/Restart capability
 - Metrics of services (memory, CPU)
 - Get config
- Docker or K8s provides this
 - What about non-containerized or Snaps
- What is the timing of removing



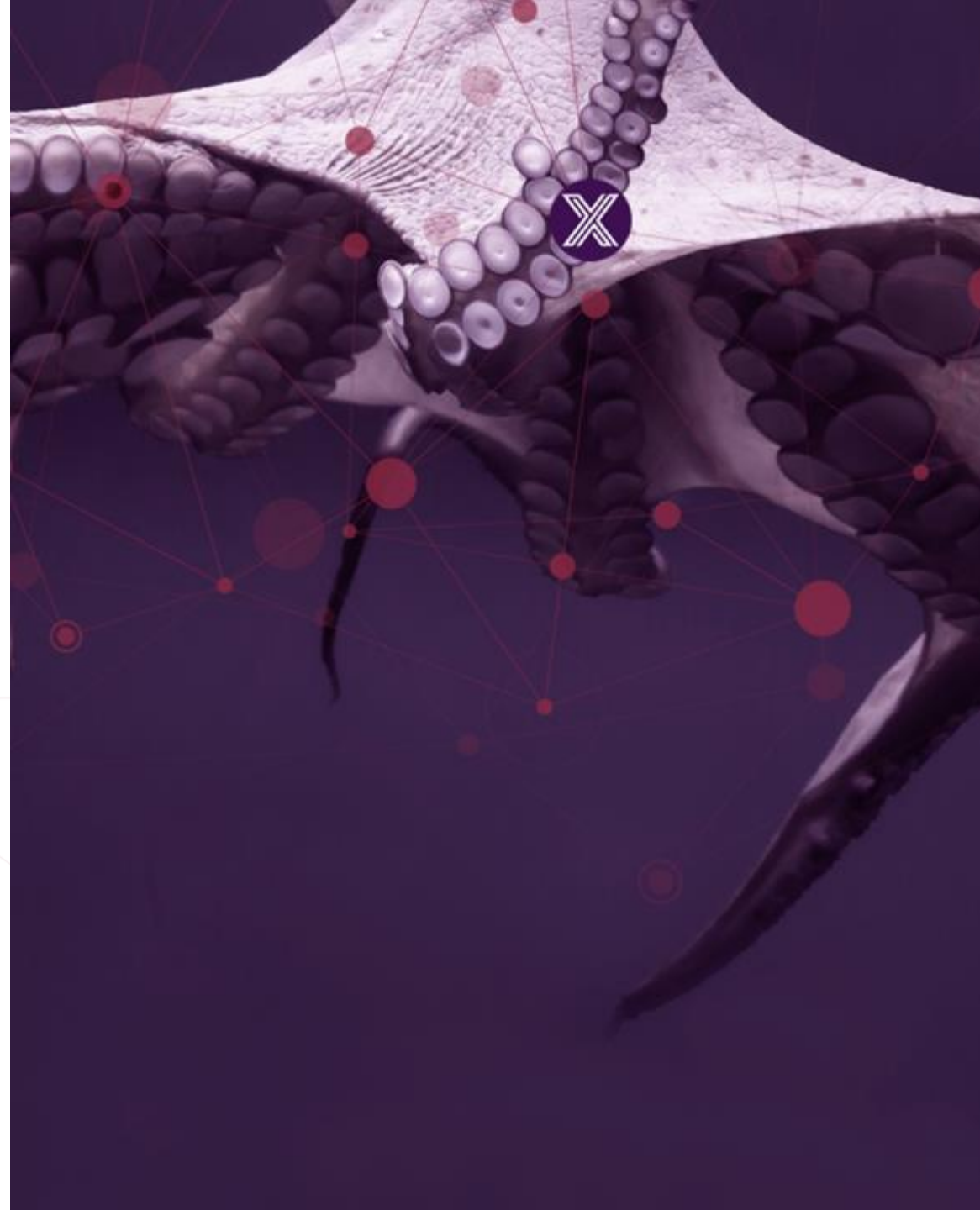
Expand Support Notifications

- Adopter use case needs
 - Send notifications via SMS, web socket or message protocol (MQTT)
 - Make it easier to use/send notifications
 - Better examples
- Allow rules engine to trigger notifications
- Allow configuration (vs coding) of alarms
 - Notifications based on certain conditions
 - Examples
 - Sensor value falls outside of a threshold
 - Service metric falls outside of a threshold (time to respond is > than a number of milliseconds)
 - Service memory use exceeds a threshold of MB

EDGE X FOUNDRY™

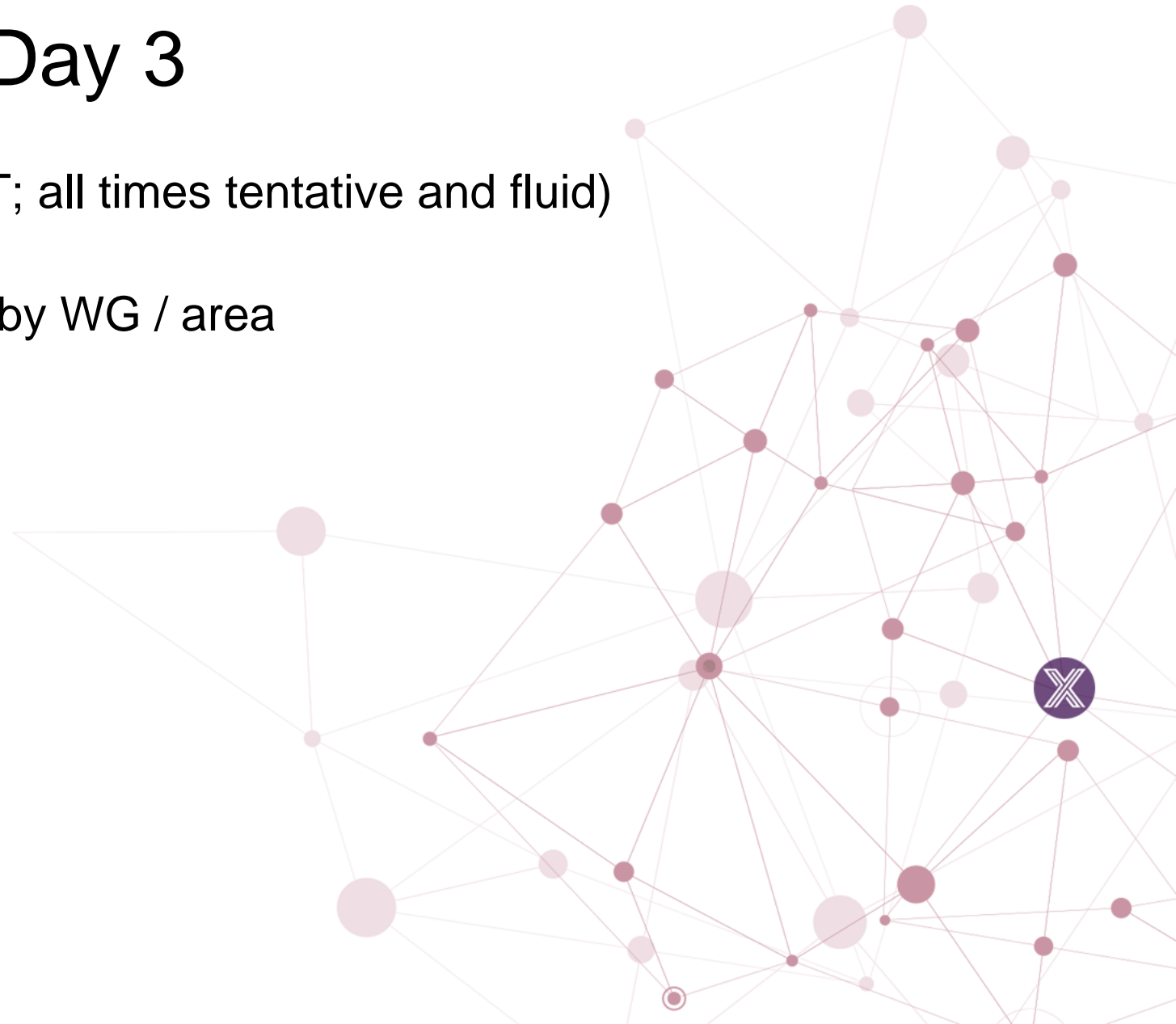
Day 3

Nov 3



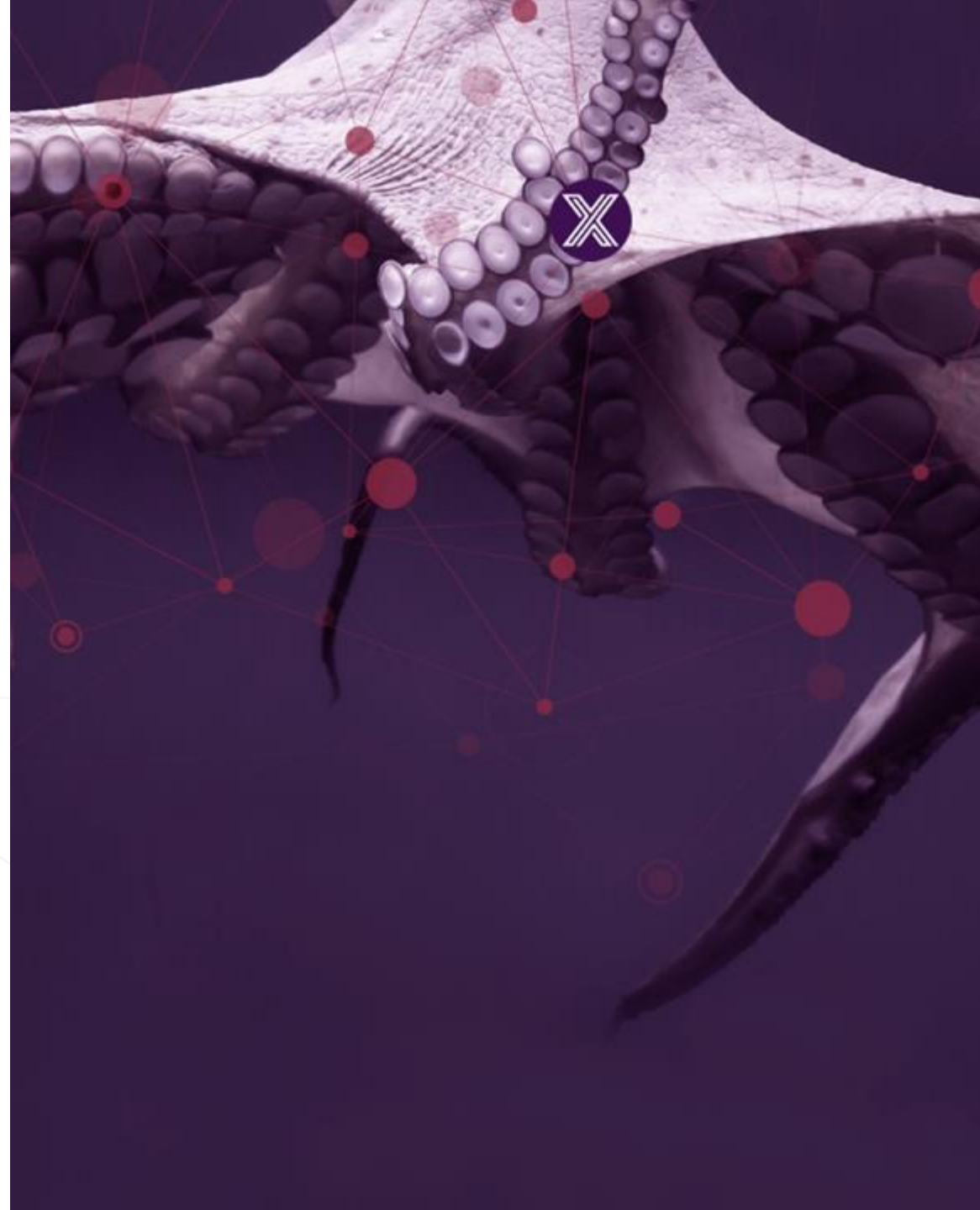
Conference Agenda – Day 3

- Nov 3, Wednesday (all times in PDT; all times tentative and fluid)
- 7:00am PDT
- 7:15am Kamakura scope planning by WG / area
 - General
 - Common
 - Cross cutting concerns
 - Core
 - GUI
 - CLI
 - System management
 - Test QA
 - Device Service
 - Application
 - eKuiper / rules engine
 - Security
 - DevOps
- 11am day 3 adjourn



EDGE X FOUNDRY™

Kamakura Scope



Considerations

- Is there a champion / developer to drive the solution & get the work done
 - Who
 - Timeline
 - Dependencies
- What is high priority and what is a stretch goal?
 - T-shirt size it
 - Small – one release; one WG; one service; approximately one man to complete
 - Med – one release; many services;
 - Large – one release; all services; could take someone all release to finish
 - X-Large – multi-release and probably more than one service

Caveats

- Items in the pages following are options at this point
- May be research or design tasks for this release
 - May be partial implementation
- No level of effort has been determined
- No priority has been assigned

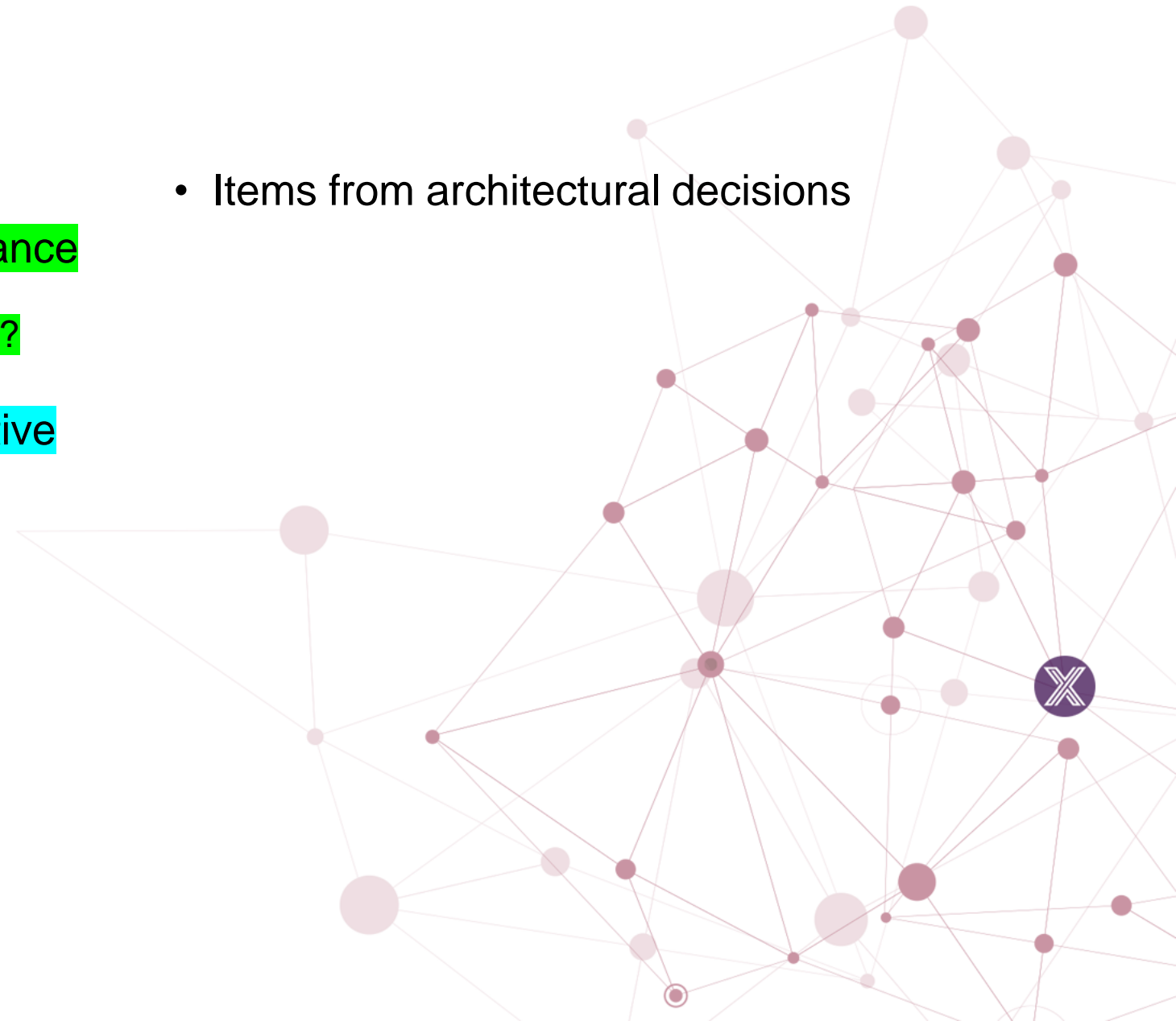
Scoping

- Categories used in our pre-wire
 - **In scope**
 - It is “In scope” – must be done; no debate; near unanimous consent
 - Only discussion is what will be completed in this release
 - **Under consideration**
 - It is not in scope yet, but it worthy of some time to discuss
 - A strong tendency to put it in scope; in scope by default if not reviewed or decided
 - Has a majority of support to at least consider it; must be put in or out of scope at the end of the meeting
 - **Not sure/On the fence**
 - There are some that believe it should be under consideration or in scope but others are unsure or even against it.
 - To be reviewed and debated during the planning meeting as time permits; placed out of scope by default if not covered in the planning meeting
 - **Out of scope**
 - Not being discussed in this meeting

General

- Upgrade Go (1.17)
- Always send CBOR option for performance
 - Test first and apply if it makes sense
 - What would “significant” savings look like?
 - >100 milliseconds?
- Remove ZMQ to allow for Windows native
 - Backward compatibility issue
- Replace poorly supported 3rd party libs
 - bitbucket.org/bertimus9/systemstat
 - github.com/armon/circbuf
 - github.com/go-logfmt/logfmt
 - github.com/mitchellh/consulstructure
 - github.com/pascaldekloe/goe
 - github.com/ryanuber/columnize
 - github.com/sean-/seed
 - 3 V1 CLI's as well

- Items from architectural decisions



Core

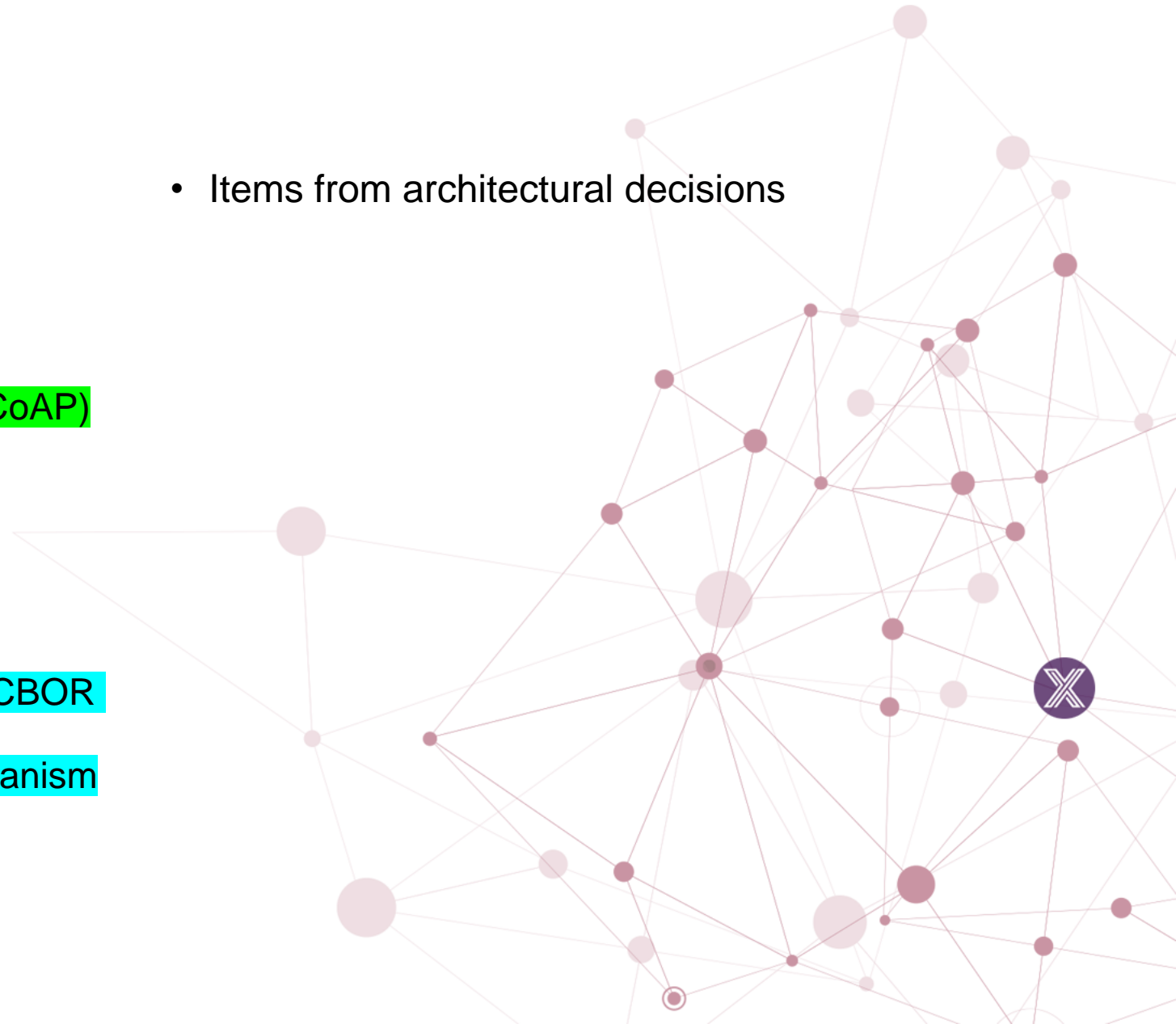
- Core
 - Update lastConnected should not trigger device service callback
 - Refactor the pkg.Encode func name
 - Move to typing in JSON
 - Tech debt to use interfaces vs string:string in properties
 - Complexity - using the string match on provision watcher
 - Support custom attribute in Device object
 - Labels very simplistic and not what they are intended for
 - Eaton requirement help
 - Narrow discussion to support for parent-child
 - Prometheus integration
 - Expand the notification service
 - SMS, message bus, web sockets
 - Raise alarms (when data or metric out of threshold)
- GUI
 - Fix unallowed activity (ex: mod device profile)
 - Testing

- CLI
 - V2
 - Support app and device services
 - Support for registry, proxy setup
- Test QA
 - More Improvements to testing (from our Jakarta planning)
 - Test without optional services, message bus v REST, etc.
 - Improved integration test (Kuiper)
 - Improved stress tests
 - Improved performance testing (other device types, CBOR, etc.)
 - Trigger performance tests from edgex-taf
 - Real hardware testing
 - In the LF lab?
 - At least a small pilot
 - CI/CD integration needs?
- Items from architectural decisions

Device Services

- C SDK work outstanding
 - Complete securing consul with access tokens
 - Complete securing the message bus
 - Secret provider for all
- BACNet DS
- Review/approve contributions (UART, GPIO, CoAP)
- Record and replay DS
 - Wiki doc design already in place
- Use cmake options to optimize dependencies
- Use Yaml v3 library (vs V2)
 - Needed for code hygiene purposes
- Handle both JSON request bodies as well as CBOR request bodies
- Implement ProtocolProperties validation mechanism
- DS Filtering
 - ADR already in place

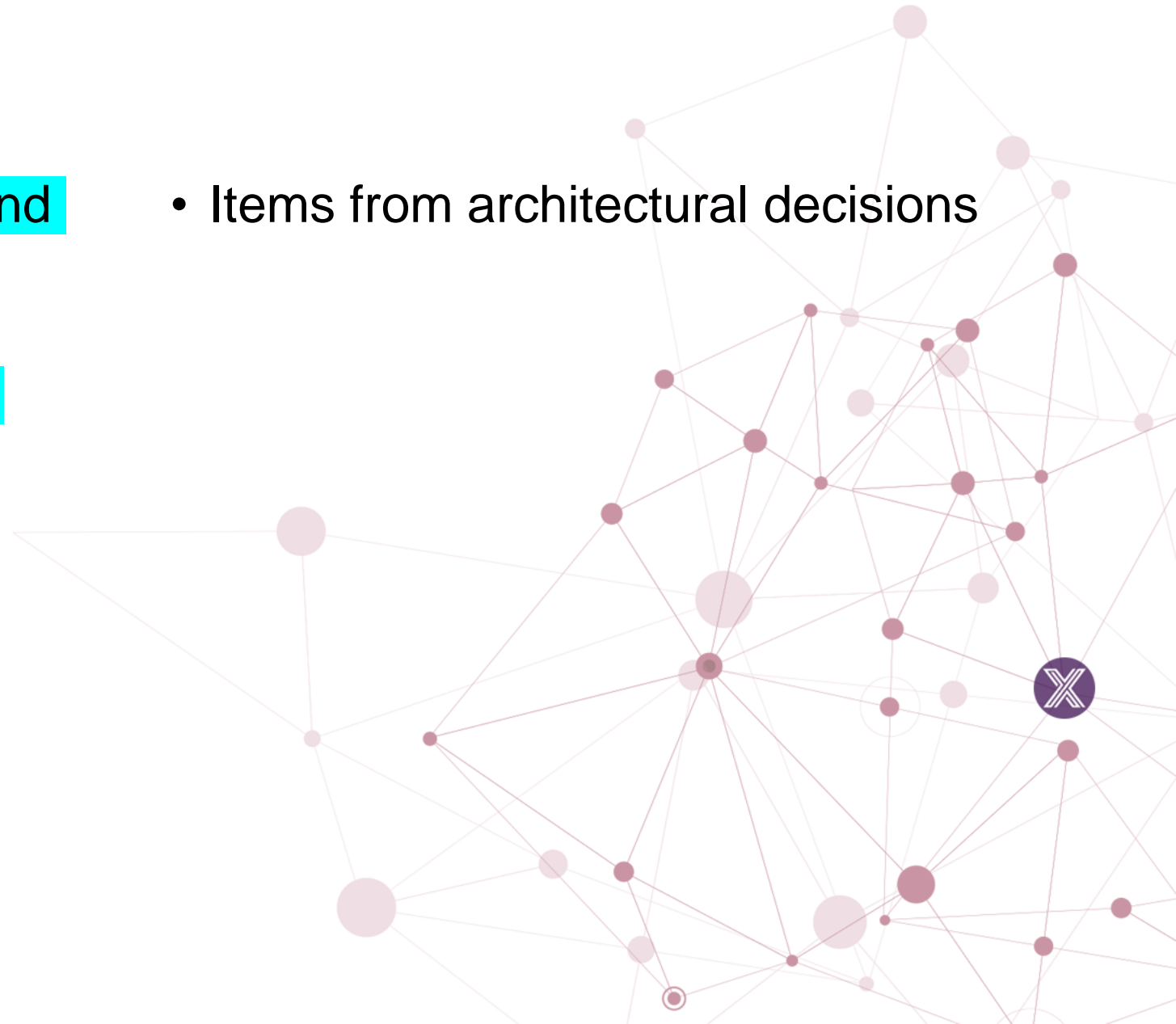
- Items from architectural decisions



Application Services

- Tight coupling between EdgeX and eKuiper
 - How do we remove this?
- Use nano message IPC for ASC pluggable pipeline function
- CloudEvent as TargetType

- Items from architectural decisions



Security

- [Secure Consul Ph2] Device SDK C: Enable Registry/Config access tokens
 - <https://github.com/edgexfoundry/device-sdk-c/issues/335>
- Secure message bus connection for C SDK
 - <https://github.com/edgexfoundry/device-sdk-c/issues/314>
- Implement ADR 0019 - Delayed start secret store tokens (SPIFFE ADR)
 - <https://github.com/edgexfoundry/edgex-go/issues/3773>
- Add "make lint" target and add to "make test" target (only for GO)
 - <https://github.com/edgexfoundry/go-mod-secrets/issues/129>
- Update SSH Tunneling for remote Device Service how to for V2
 - <https://github.com/edgexfoundry/edgex-docs/issues/515>
- Update Swarm for remote Device Service how to for V2
 - <https://github.com/edgexfoundry/edgex-docs/issues/516>
- Internal Digest implementation doesn't work with ONVIF Foscam/amcrest IPCAM
 - <https://github.com/edgexfoundry/device-camera-go/issues/104>
- Expose Consul UI on the host when EdgeX is operating in secure mode (snap)
 - <https://github.com/edgexfoundry/edgex-go/issues/3744>
- [Secure Consul Ph. 3] Fine tune Vault configuration as to Consul's secret engine token's TTL
 - <https://github.com/edgexfoundry/edgex-go/issues/3258>
- [Secure Consul Ph. 3] Create ACL Policies and Roles for all services and per EdgeX service
 - <https://github.com/edgexfoundry/edgex-go/issues/3257>
- [Secure Consul Ph. 3] Create a global Consul token (stored in a file) for use in remote configuration
 - <https://github.com/edgexfoundry/edgex-go/issues/3158>
- ADR for microservice communication security (ADR first – not necessarily implement)
 - <https://github.com/edgexfoundry/edgex-go/issues/1950>
- We should perhaps be thinking about enabling the "bring-your-own Vault" approach, similar to what I proposed for SPIFFE/SPIRE support. This would allow users to potentially run the Vault instance in a cloud where it is more secure.
- Integrate GoKart security scanning
 - <https://github.com/edgexfoundry/edgex-go/issues/3715>
- Investigate alternatives to Kong that have better platform support and use less memory
 - <https://github.com/edgexfoundry/edgex-go/issues/3747>

DevOps

- **Pipeline Optimizations:**
 - Tech Debt: Fix multiple nodes being spun up during edgeXBuildGoApp and edgeXBuildCApp
 - Spike: docker image multi-arch builds with buildx (spin up less nodes, speed up builds)
 - *Implementation: depending on spike docker image multi-arch builds with buildx
 - Spike: rewrite git-semver in python
 - *Implementation: depending on spike, rewrite git-semver in python
 - Potential Golang linting/scanning pipeline changes. Will coordinate with Security WG
- **Documentation**
 - Continued documentation updates

- Potentially automate badge awarding
- Implementation of Docker CIS Security bench pipeline
- Investigate Snky API

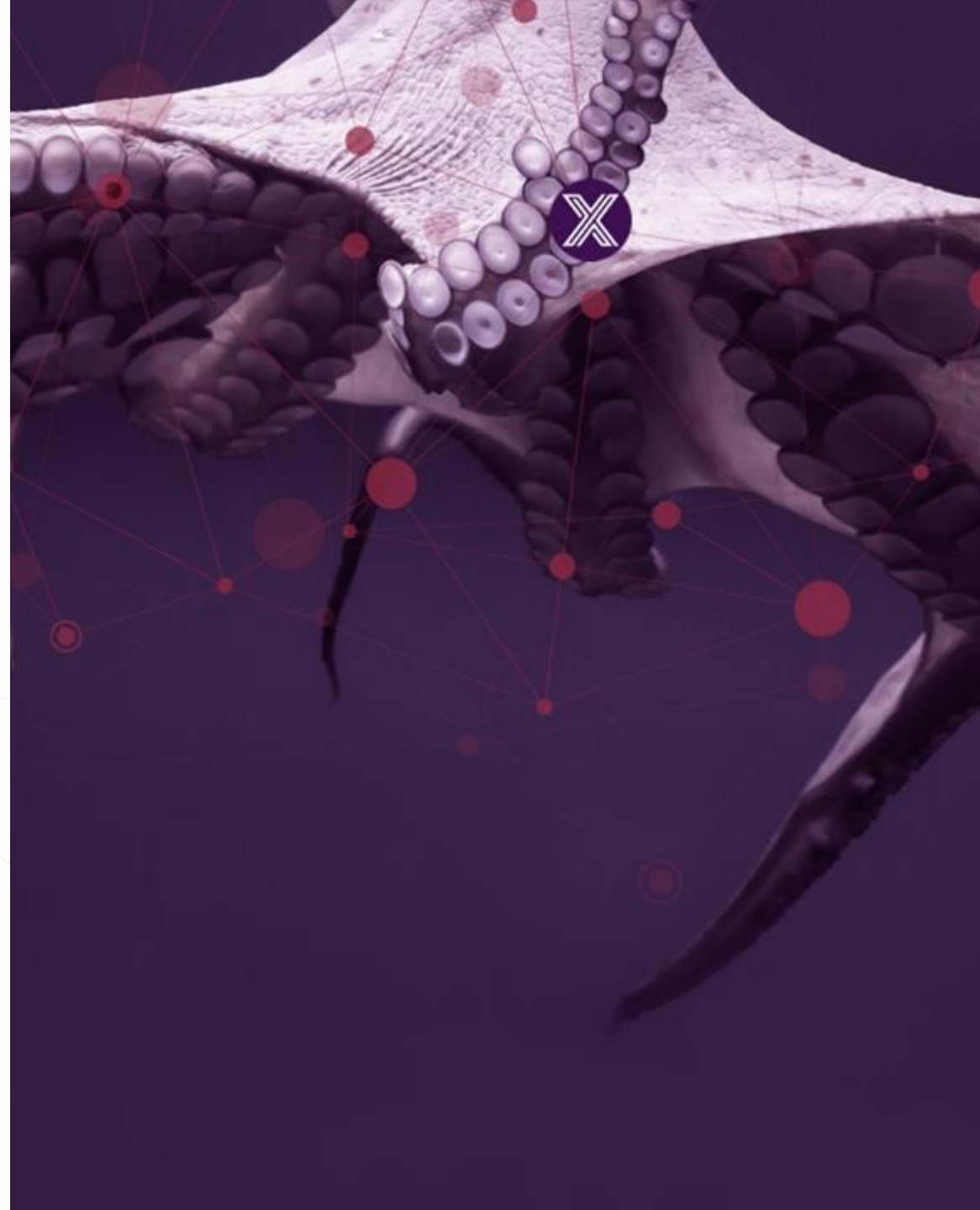
Miscellaneous

- Snaps
 - ???
- **Examples updates/improvements**
 - **Cloud export – more explicit for Azure, AWS, Google**
 - **Update cloud templates**
 - **Timeseries DB export (Influx)**
 - **RP4**
 - **More Kubernetes support/examples**
- **Docs**
 - **Device service restructuring and adding undocumented features**
 - **Documenting the API (like discovery)**

EDGE X FOUNDRY™

Day 4

Nov 4



Conference Agenda – Day 4

- Nov 4, Thursday (all times in PDT; all times tentative and fluid)
- 10am PDT Meeting Start
- Scope and architectural questions not addressed in prior 3 days will be finished as priority work on day 4 as needed.
- 10:15am Jakarta lessons learned
- 10:45am Spring release - in person face to face??
 - Venue/time line
- 11am Long term roadmap - beyond Kamakura
 - Backlog revisit
 - Next LTS forecast
- 12:30pm Planning meeting lessons learned and changes for Levski
- 1pm day 4 adjourn

Lessons Learned in Jakarta

- Positives
- What could be improved
- Shout outs for great work

- For context and reference – here were our items from Ireland

- Things that we did well/were wins
 - V2/TAF
 - Lot of work, scheduled well, coordinated well
 - Lot of redesign as we went along
 - Behaving more “agile” in project nature
 - Breaking changes – we got a lot done; removed future issues
 - Even things that weren’t originally on our radar like port adjustments
 - EdgeX doing well in China
 - Slack communications
 - EdgeX Website
 - EN/Chinese
- Things that we could improve
 - Some design decisions seemed too rushed
 - Redesign did cause churn
 - Did we tackle too much?
 - Outreach organization – needs some focus
 - **Need for hackathon like outreach** – COVID impact, but how do we get more developers
 - **Not overlay freeze week with planning meeting**
 - **Need 3 weeks for freeze with LTS**

Spring (Levski) Release Planning

- Time for a face-to-face?
 - Organizational support
 - Venue suggestions/volunteers to host
 - Timing
 - Mid-April?
 - With potential early May release dates

Long-term Roadmap

- Backlog
 - <https://wiki.edgexfoundry.org/display/FA/Backlog>
- What would we see as likely big features in Levski?
- When would we project our next LTS?
 - 2 years?
- Long-term considerations
 - Digital ledger technology
 - Providence and governance



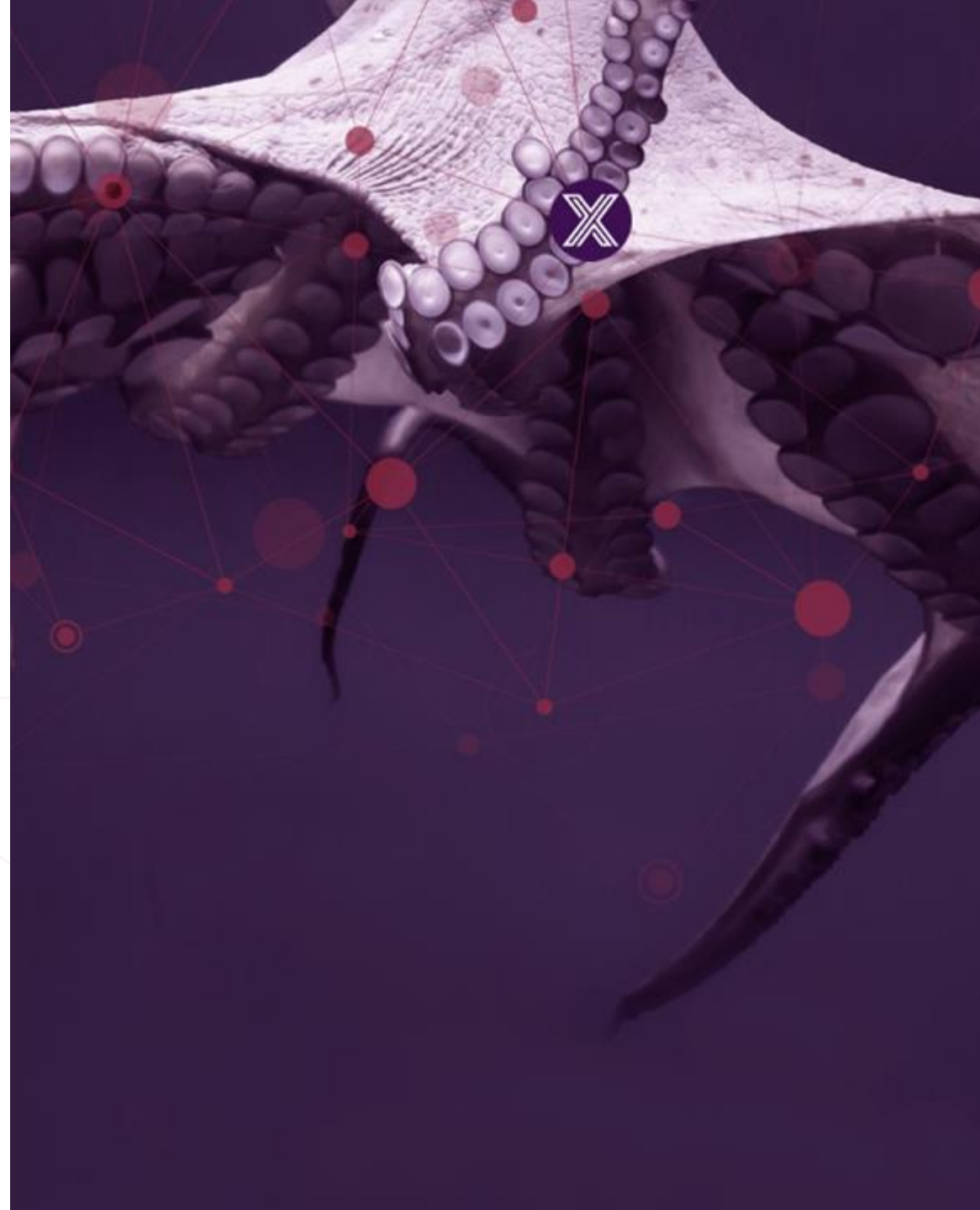
Planning Meeting Lessons Learned

- Release Planning Meeting
 - Any lessons learned?
 - Any thing that could be done better?
 - Start doing, continue doing, stop doing
 - What worked well and what did not?
- If we shift to F2F for the next meeting, what would we do different?

EDGE X FOUNDRY™

Day 5

Nov 5



Conference Agenda – Day 5

- Nov 5, Friday (all times in PDT; all times tentative and fluid)
- 8am PDT Meeting Start
- Unconference schedule to be determined