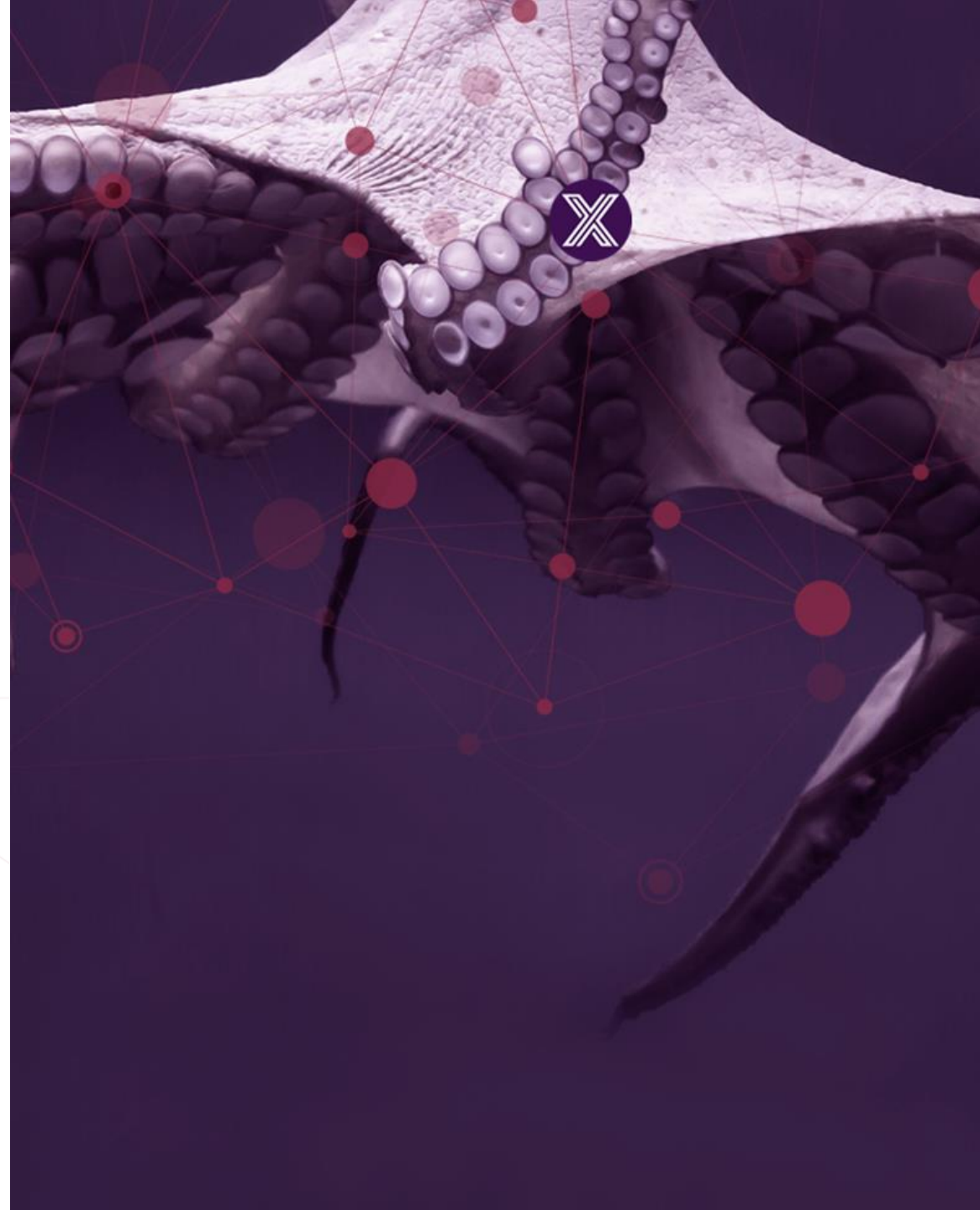




EdgeX Foundry Introduction LTS

Jim White

November 2021



Edge X Jakarta Release

- Our 9th release
- A minor release
- Release date – November 17th
- Jakarta is a stabilization release
- Jakarta is the first Edge X LTS release



Stabilization Release

- No major architect changes
- Everything is backward compatible
- No new name changes
- Allowed/encouraged for this release
 - New (additive) APIs/end points
 - Performance/optimization concerns (bloat around services)
 - Explore 3rd party platforms for options
 - New config (but can't remove)
- Performance guidance
 - Will EdgeX fit on my system? What is the speed of data through the system? How many “things” can be processed at a time?
- More Testing (discussed later)
- Robustness
 - Restarting of services without issue
 - Track / evaluate footprint
 - CPU, Memory, Image size, especially around 3rd party components

LTS Release

- Our first LTS
 - Per <https://wiki.edgexfoundry.org/display/FA/Long+Term+Support>
 - But this will be relooked and detailed more during summer 2021
- 2 year support cycle
- Support is defined as:
 - Community members best effort and development priority to fix a security or system bug or major flaw
 - Availability of the source code, test code and artifacts, and program artifacts such as micro service executables, shared libraries, container images (Docker), packages (snaps), etc.
 - Availability of the platform documentation
 - EdgeX will not offer support around 3rd party products (Kong, Vault, Consul, etc.)

See the following links for more details

- EdgeX LTS Policy: <https://wiki.edgexfoundry.org/pages/viewpage.action?pageId=69173332>
- Jakarta LTS (what's included):
<https://wiki.edgexfoundry.org/pages/viewpage.action?pageId=70948690>
- Jakarta Release Page: <https://wiki.edgexfoundry.org/display/FA/Jakarta>
- Jakarta Docker Compose Files: <https://github.com/edgexfoundry/edgex-compose/tree/jakarta>

EDGE X FOUNDRY™

A Linux Foundation project under  LFEDGE

