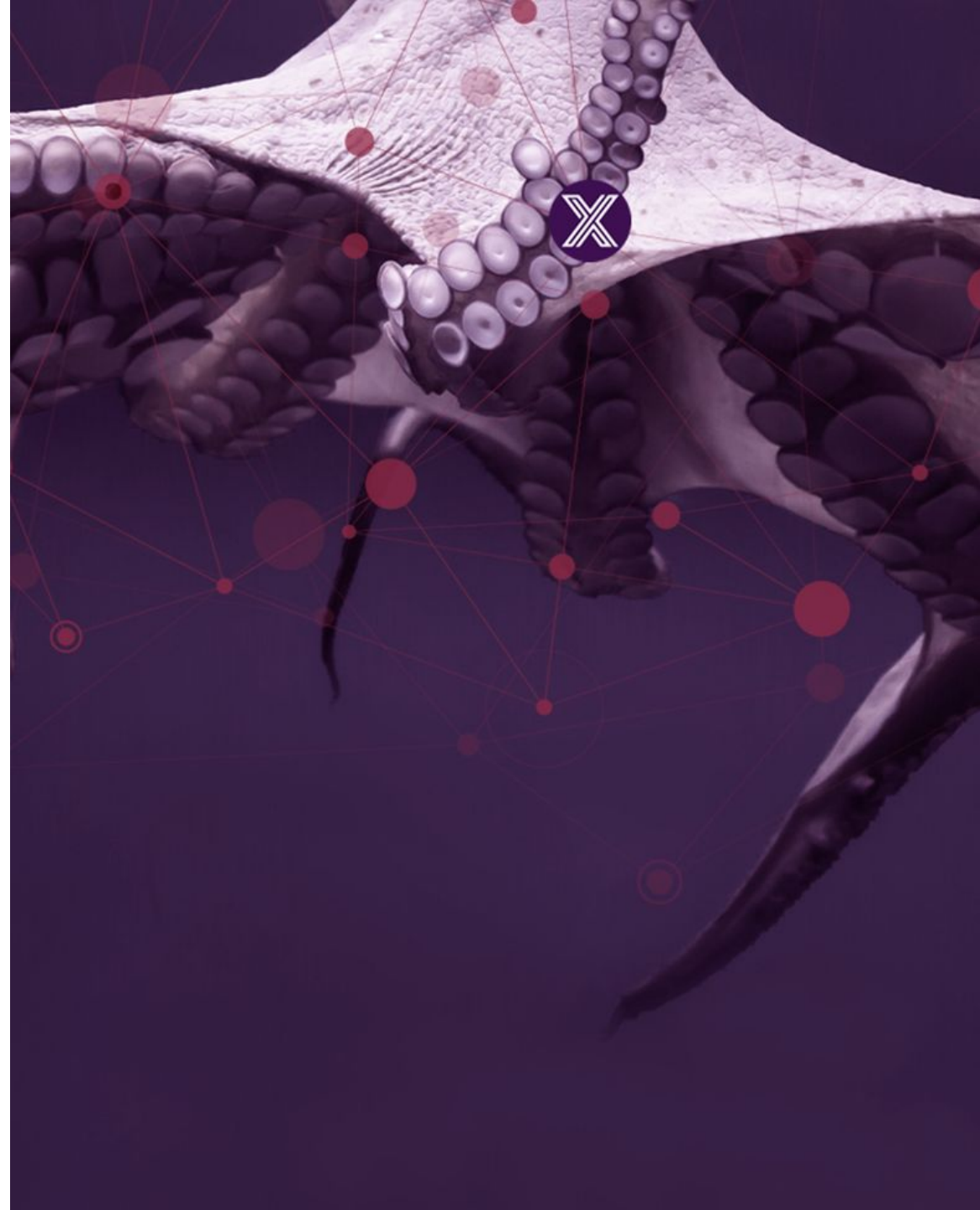


EDGE X FOUNDRY™

# TSC Meeting

Jun 10, 2020



# LF Antitrust Policy Notice

EdgeX Foundry meetings involve participation by industry competitors, and it is the intention of the Linux Foundation to conduct all of its activities in accordance with applicable antitrust and competition laws. It is therefore extremely important that attendees adhere to meeting agendas, and be aware of, and not participate in, any activities that are prohibited under applicable US state, federal or foreign antitrust and competition laws.

Examples of types of actions that are prohibited at EdgeX Foundry meetings and in connection with Linux Foundation activities are described in the Linux Foundation Antitrust Policy available at <http://www.linuxfoundation.org/antitrust-policy>. If you have questions about these matters, please contact your company counsel, or if you are a member of the Linux Foundation, feel free to contact Andrew Updegrove of the firm of Gesmer Updegrove LLP, which provides legal counsel to the Linux Foundation.

# Meeting Logistics

Time: Wednesdays 8am PDT – 9am PDT

Join from PC, Mac, Linux, iOS or Android: <https://zoom.us/j/983155298>

Or iPhone one-tap (US Toll): +14086380968,983155298# or +16465588656,983155298#

Or Telephone:

Dial: +1 408 638 0968 (US Toll) or +1 646 558 8656 (US Toll)

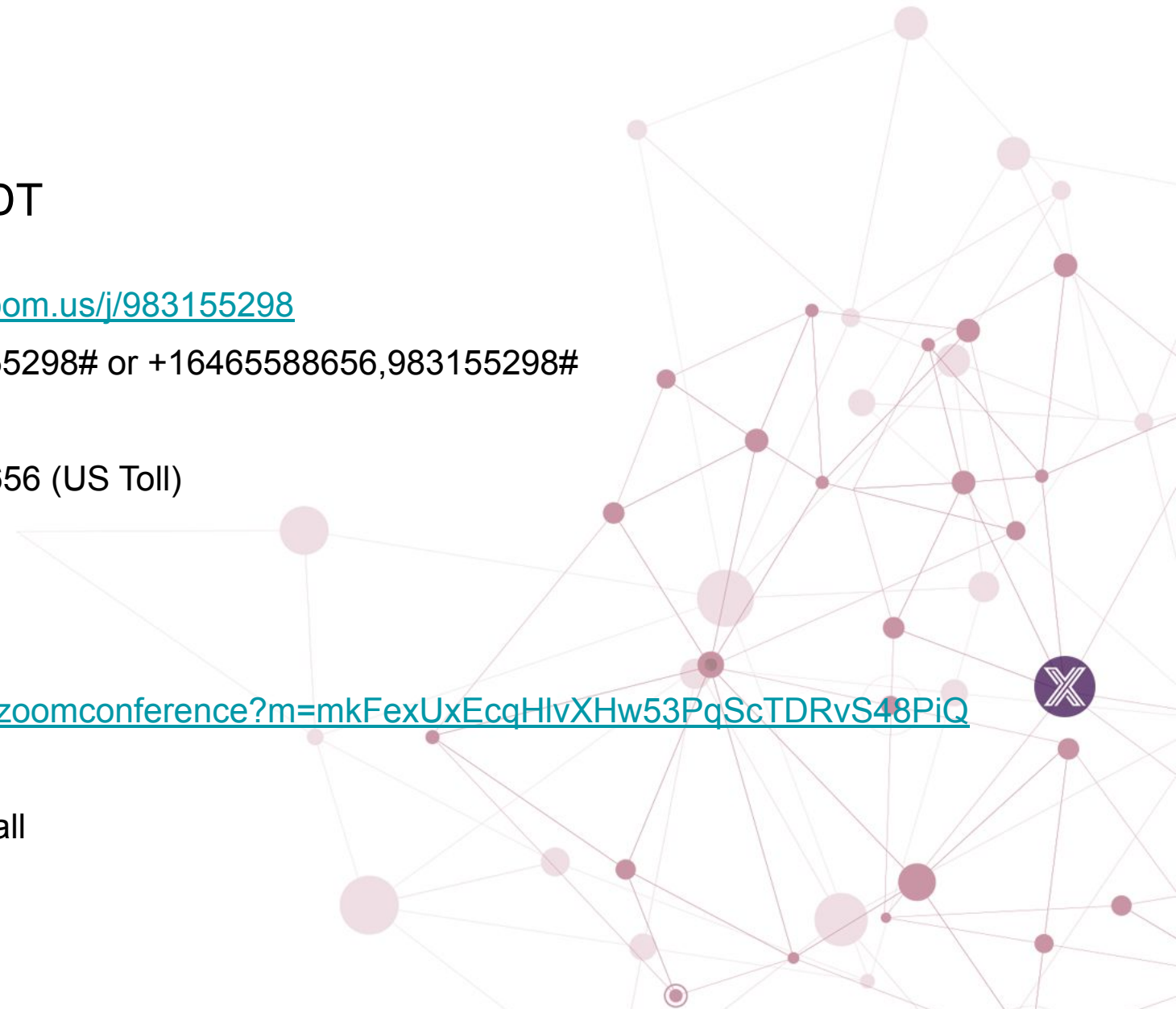
+1 855 880 1246 (US Toll Free)

+1 877 369 0926 (US Toll Free)

Meeting ID: 983 155 298

International numbers available: <https://zoom.us/join?j=983155298>

\*\* TSC calls are recorded and added to Wiki post-call



# TSC – Members Present Today

<u>Company</u>	<u>Name</u>	<u>Email</u>
Intel	Camilo Dennis	<a href="mailto:camilo.a.dennis@intel.com">camilo.a.dennis@intel.com</a>
IOTech	Iain Anderson	<a href="mailto:iain@iotechsys.com">iain@iotechsys.com</a>
Intel	James Gregg	<a href="mailto:james.r.gregg@intel.com">james.r.gregg@intel.com</a>
IBM	Joe Pearson	<a href="mailto:joe.pearson@us.ibm.com">joe.pearson@us.ibm.com</a>
IOTech	Keith Steele (TSC Chair)	<a href="mailto:keith@iotechsys.com">keith@iotechsys.com</a>
VMware	Malini Bhandaru	<a href="mailto:mbhandaru@vmware.com">mbhandaru@vmware.com</a>
Intel	Mike Johanson	<a href="mailto:michael.johanson@intel.com">michael.johanson@intel.com</a>
IOTech	Robin Chattergee	<a href="mailto:robin@iotechsys.com">robin@iotechsys.com</a>
Beechwoods	Rodney Hess	<a href="mailto:rodney@beechwoods.com">rodney@beechwoods.com</a>
RSA	Tingyu Zeng	<a href="mailto:tingyu.zeng@rsa.com">tingyu.zeng@rsa.com</a>
Canonical	Tony Espy	<a href="mailto:espy@canonical.com">espy@canonical.com</a>
Dell	Trevor Conn	<a href="mailto:Trevor.Conn@dell.com">Trevor.Conn@dell.com</a>
Dell	Michael Estrin	<a href="mailto:m.estrin@dell.com">m.estrin@dell.com</a>

Current quorum = 7 members

*Note: Quorum for TSC meetings requires at least fifty percent of all voting members of the TSC to be present. The TSC may continue to meet if quorum is not met, but will be prevented from making any decisions at the meeting. Except as provided in Section 7.c. and 8.a, decisions by vote at a meeting require a majority vote of those in attendance, provided quorum is met. Decisions made by electronic vote without a meeting require a majority vote of all voting members of the TSC.*

# Today's Agenda

- Dot release details
- WG Updates
- Glossary / Landscape project of LF Edge (Molly Wojcik)
- APJ ?'s/feedback/updates
- TSC Elections info and status
- Upcoming Events (Dev Advocate)

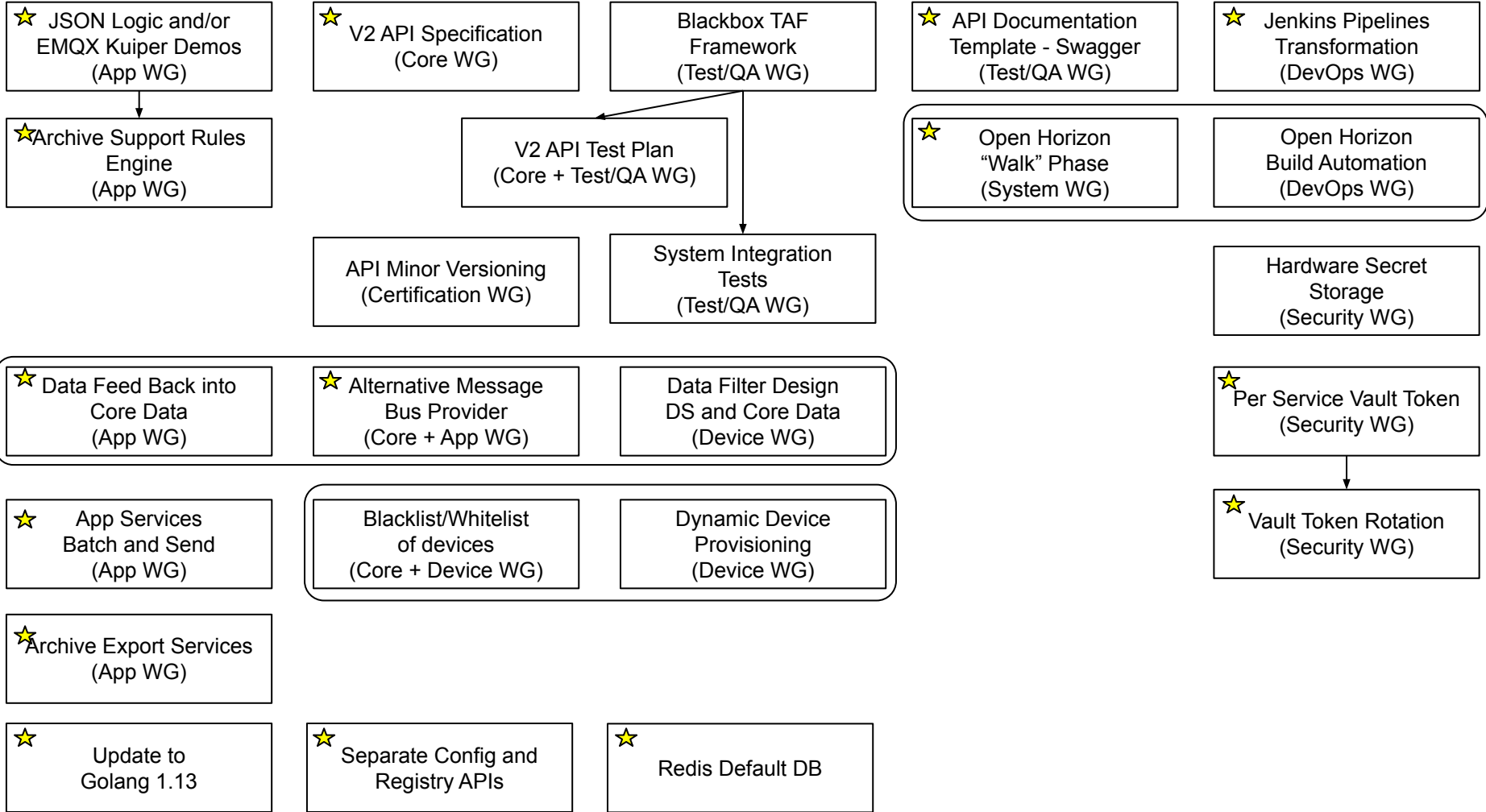


EDGE X FOUNDRY™

# Geneva Release & Release Czar readout



# EdgeX Geneva Release Overview

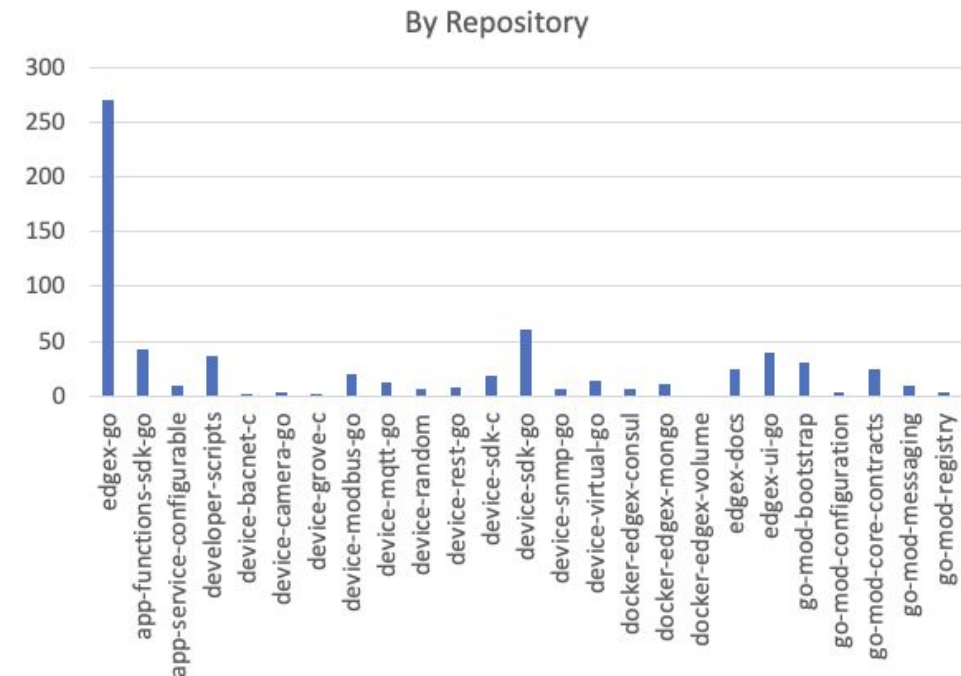
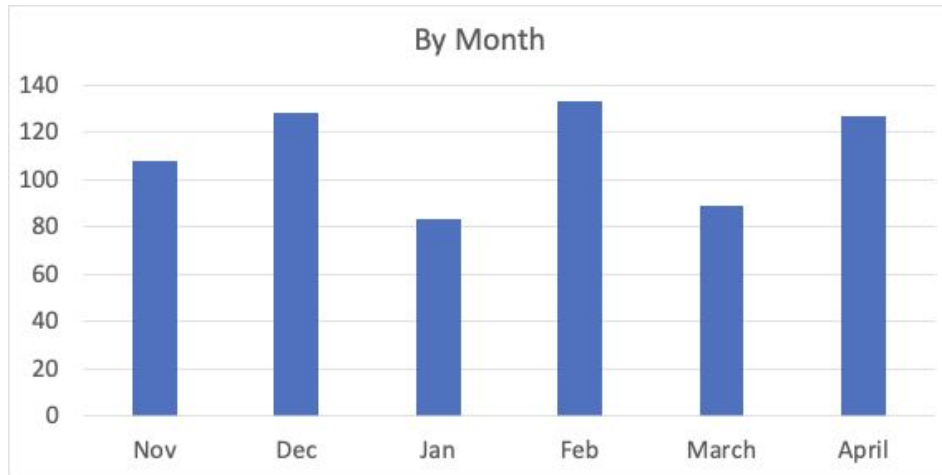


# Release Overview

## Release Artifact Status

- Docker Images are staged in Nexus for release
- Snap channels are created for Geneva

## Closed Issues - 668 Overall





# Geneva Dot 1.2.1 Release

- Mini freeze to master on most repositories until we get the freeze out on Friday
- Coding done by Wednesday
- Check for issues on Thursday as well as tag 1.2.1
- Release on Friday
- Update compose files shortly after

# 1.2.1 Release contents

- Fix in device-sdk-go to address issue #532 (critical CPU consumption issue based on inappropriate interval)
  - This will also require all Go based device services to be released with the fix as well.
- Small one line bug fixes to device-mqtt-go and device-modbus-go to address env override for profile dir(issues #149 and #152 respectively)
- Changes in edgex-ui-go to address gateway / security issues (addressing short term fixes for some of #222, #223, #224, #225 and #226 in edgex-ui-go)
- Changes to scheduler service (as part of edgex-go) to eliminate bug on removal of interval (#2554 and associated to issue #2520 and PR #2552)
- Changes to support-rulesengine for remote logging URL (#74)
- Changes to go-mod-bootstrap to address issue #76 – empty vars being ignored especially as it relates to webserver host name & Consul callback issue
  - This will also require artifact creation for all core/supporting services, device services, and app services that consume go-mod-bootstrap
- There are a few identified Snap changes
- There is a change to the app functions SDK and therefore associated configurable app service (inclusive of issue #376)
- C SDK 1.2.1 is already tagged at 1.2.1



EDGE X FOUNDRY™

# Work Group Updates

Chairs

# Working Group Chair Updates

- Around the horn
  - Core/Supporting - Trevor Conn
  - Applications - Mike Johanson
  - Device Services - Iain Anderson
  - Test/QA - Robin Chatterjee
  - DevOps - James Gregg
  - Security - Malini Bhandaru and Tingyu Zeng
  - System Management - Michael Estrin
    - Open Horizon - Joe Pearson
  - Certification - Rodney Hess
  - Vertical Solutions - Camilo Dennis and Henry Lau
  - Updates from Release Czar - Lisa
  - Updates from Dev Advocate - Aaron

# Core Working Group (10-Jun-2020)

- No report today. Trevor on vacation
- Core WG call @ 10AM US/Central tomorrow - cancelled

# Applications WG Update (10-Jun-2020)

## Complete:

- Filter Out Device Transform
- Azure Resource Management Templates (For Endorsement)
- Documentation update for Pipeline Config for ASC

## WIP:

- Bug fix for message formatting in logs
  
- App Working Group Meeting held on Fridays @ 9AM PDT
  - Next meeting June 12th, 2020

# Application Services

## Functions (built into SDK)

Current/Complete:

- AES Encryption
- GZIP Compression
- ZLIB Compression
- MarkAsPushed
- PushToCore
- Device Name Filter
- Value Descriptor Filter
- NEW!** • Batch
- NEW!** • JSONLogic Filtering
- XML Conversion
- JSON Conversion
- MQTT(S) Export
- HTTP(S) POST Export

## Features

- Store and Forward
- Web Server
- Configurable App Service
- NEW!** • Vault Integration for Secrets
- NEW!** • MQTT Event triggers (via go-mod-messaging)

## Reference/Example App Services (Geneva)

(built on top of SDK)

- Azure IoT Hub
- Amazon IoT Core
- IBM Watson IoT
- Cloud Event Transformation
- Secret Retrieval Example

AVAILABLE

AVAILABLE

NEW!



# Device Services WG Update (10-Jun-20)

- C SDK tagged at 1.2.1
  - Updated Grove device service in progress
- Go SDK needs to consume newer go-mod-bootstrap
  - Go device services release depend on edgex-go issue #2580
- -holding repository created for RFID/LLRP device service

Next WG meeting June 15th

# Device Services - current/coming (as of 5/7/20)

## Open Source connectors (Current):

- Modbus (TCP/RTU) in Go
- Virtual Device in Go
- SNMP in Go
- MQTT in Go
- BACnet (IP & MSTP) in Go
- ONVIF Cameras in Go
- REST in Go (NEW!)

## Open Source connectors (Future):

- Bluetooth in C (summer 2020)
- BACnet (IP & MSTP) in C (summer 2020)
- OPC-UA in C (summer 2020)
- Grove C (summer 2020)

## Commercial connectors (Current):

- File Exporter in C
- BLE in C
- Zigbee in C
- GPS in C
- CAN in C
- MEMS in C
- EtherCat in C
- Profinet in C

There are additional commercial MQTT (Go), Modbus (Go), OPC-UA (in C) and BACnet (in C) that have added features over the community editions

## Commercial connectors (Future):

- EtherNet/IP in C (summer 2020)
- CanOpen in C (summer 2020)
- OPC-UA Pub/Sub in C (summer 2020)
- ONVIF in C (summer 2020)

# Test/QA WG Update (06-10-2020)

- Blackbox Test
  - Working issues
    - Refactor scripts to pull and deploy using new multi-file compose files [PR#459](#) (Approved and verified on sandbox)
    - Remove Mongo from Jenkins pipeline [ci-management#611](#)
- TAF
  - Working issues
    - Issue [#122](#), to update to use new multi-file compose file.
    - Docker daemon permission denied on x86\_64 VM, opened Jenkins ticket to LF IT-19912
  - Fixed issues
    - Issue [#27](#), to remove Mongo test.
- New Business
  - Create Device SDK and App SDK API document page on edgex-doc [PR#157](#) (Merged)
  - Up the version number of Swagger files in edgex-go [PR#2562](#), and upload v1.2 onto SwaggerHub.(Merged)
  - Set the SwaggerHub automatically upload as a public document [ci-management#609](#) (Merged)

# Postman Blackbox Test Cases

OS		DB	Total TCs No.	Failed TCs No. of Past Week	Failed TCs No. of This Week	Fixed TCs No.
x86_64 / CentOS	Non Security	Mongo	1312	0	0	0
		Redis	1312	0	0	0
x86_64 / CentOS	Security	Mongo	1342	0	0	0
		Redis	1342	0	0	0
arm64 / Ubuntu	Non Security	Mongo	1312	0	0	0
		Redis	1312	0	0	0
arm64 / Ubuntu	Security	Mongo	1342	0	0	0
		Redis	1342	0	0	0

# TAF Functional Blackbox Test Cases

OS		DB	Total TCs No.	Failed TCs No. of Past Week	Failed TCs No. of This Week	Fixed TCs No.
x86_64 / CentOS	Non Security	Redis	52	0	52	0
x86_64 / CentOS	Security	Redis	52	0	52	0
arm64 / Ubuntu	Non Security	Redis	52	0	0	0
arm64 / Ubuntu	Security	Redis	52	0	0	0

# TAF Integration Test Cases

## Integration tests

OS		DB	Total TCs No.	Failed TCs No. of Past Week	Failed TCs No. of This Week	Fixed TCs No.
x86_64 / CentOS	Non Security	Redis	6	0	0	0
x86_64 / CentOS	Security	Redis	6	0	0	0
arm64 / Ubuntu	Non Security	Redis	6	0	0	0
arm64 / Ubuntu	Security	Redis	6	0	0	0

## Compatibility tests

OS		DB	Total TCs No.	Failed TCs No. of Past Week	Failed TCs No. of This Week	Fixed TCs No.
x86_64 / CentOS	Non Security	Redis	12	12	0	12
x86_64 / CentOS	Security	Redis	12	0	0	0
arm64 / Ubuntu	Non Security	Redis	12	0	0	0
arm64 / Ubuntu	Security	Redis	12	0	0	0

# DevOps WG Update (06-10-2020)

## Hanoi

- **Performance Optimizations**
  - Build Optimizations for edgex-go
    - Image promotion
    - Improvements to support same type of optimizations for all other pipelines (edgeXBuildGoApp and edgeXBuildDocker) - WIP
  - Planning next sprint - grooming backlog user stories to align to the same process we used in Geneva - phases of work
- **DevSecOps**
  - Continued explore of options for addressing Issue #1947 - vetting of OSS dependencies
    - Now looking at FOSSA since it's something being used by other LF projects (CNCF)
  - Community Bridge Feature Requests
    - Transitive dependencies for Go modules - findings don't match other tools like Sonatype - No Update
- **Other**
  - **githubsync - GitHub Automation to create labels used across all EdgeX Foundry repos**
    - New feature with the refactor (Python) the full sync takes ~5m to complete compared to ~2h17m before; half of that 5m is from building the python container.
  - **Self Service Committers**
    - Aric Gardner presented self-service committers as an option to move from the need to submit JIRA tickets for managing permissions on repos.
  - **Code Signing - lftools /sigul replacement**
    - LFTools / Sigul latest version that supports Python 3.x
      - LF is now considering an alternative signing tool
      - LF encountered some of the challenges within their fork trying to refactor sigul to support the latest Python 3.x

Next DevOps WG Meeting 06/11/2020 @9:00AM PST



# System Management WG Update (June 10, 2020)

- No report today.
- Next meeting: Friday, June 19th @ 10AM CST

# Security WG Update (06-10-2020)

- Hanoi release working items in progress/review
- SIR team update - No major issues found
- Security WG meeting
  - Stop security scanning on docker-edgex-volume
  - Keep security scanning on docker-edgex-mongo for dot release/security fix
  - Move discussion of 3rd party vetting process to future architecture meeting

# Certification WG Update (6-8-20)

- Michael Johanson's presentation and demonstration of an Azure-based template for an EdgeX instance
- Discussion with Lisa about what's needed in an AWS-based template
  
- Next meeting is Monday, June 15th, 9 a.m. PDT

# Vertical Solutions WG Update (June 10, 2020)

- Recent meetings: Use cases, and opportunities for EdgeX community
  - 5/12 [Conexxus](#): Convenience stores technology standards and use cases
  - 5/26 [Appcard](#): Customer Engagement solutions ISV, use cases for grocery stores and QSRs
  - 6/9 [RF Rain](#): RFID ODM, use cases across various verticals
- Last 2 meetings with 30+ attendees
- Next meeting: June 23rd, 2020, Tuesday 10am PST

# Marketing update (6/10/20)

- Continue to drive Website project with El Roboto (3rd party)
  - Folder with key documents milestones and information at the Marketing WG wiki <https://wiki.edgexfoundry.org/display/FA/Marketing+WG>
- Geneva landing page created (Thank you Andy!)
- Topcoder Challenge
  - Working to secure SME(s) for second topcoder challenge
- Pulse with meeting participants. Start, Stop, Continue for Marketing meeting.

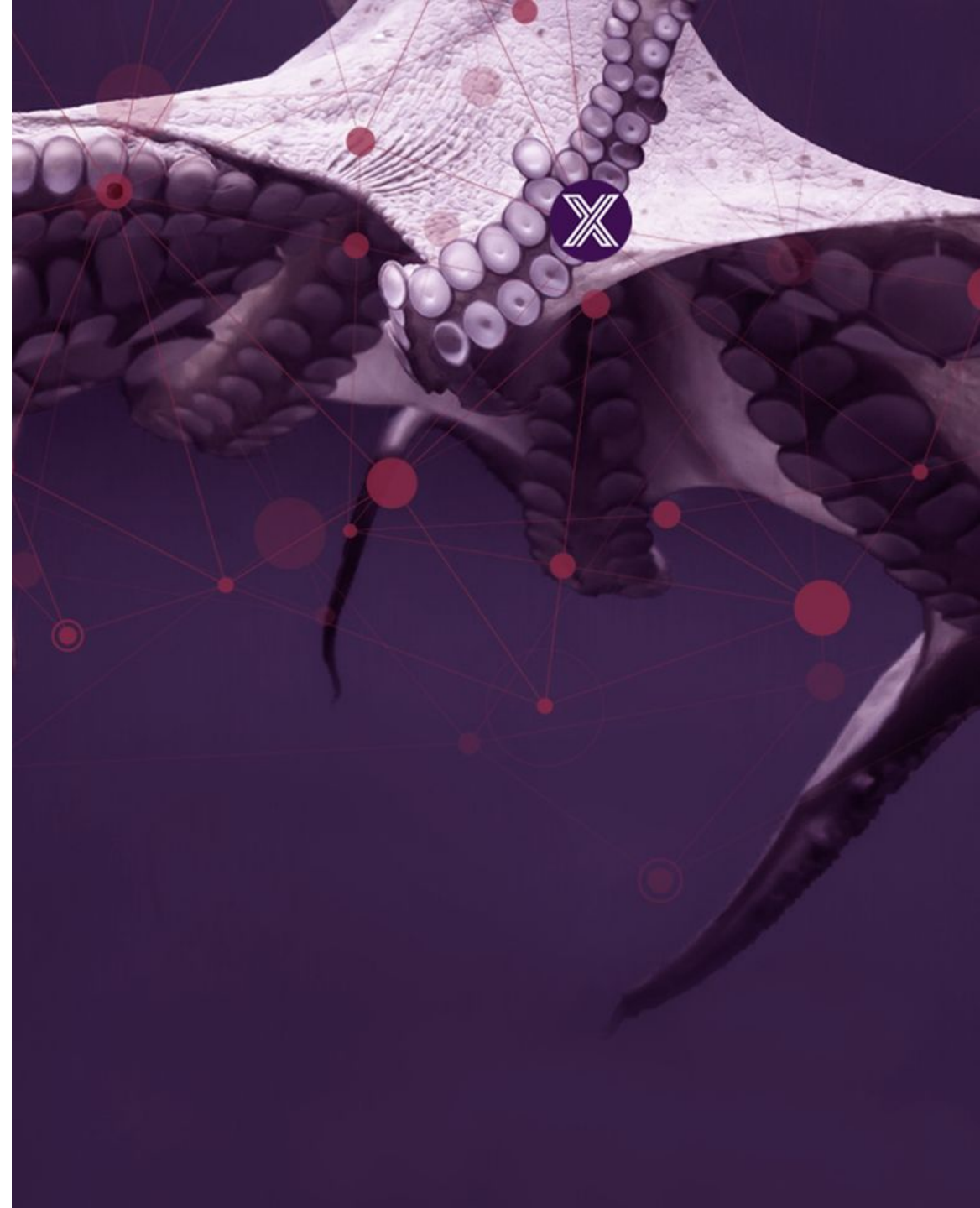
# Miscellaneous (Jim)

- We are holding a survey to get feedback from the community and beyond with regard to our command line interface tool (CLI).
  - Please take a couple of minutes to fill it out when you receive the link
  - <https://www.surveymonkey.com/r/QWKHZZZ>
  - <https://bit.ly/EdgeXCLI>
- Monthly Architect's meeting next monday - June 15, 12noon CDT
- PM discussion
- Outreach discussions

EDGE X FOUNDRY™

# LF Edge Glossary Project

**Molly Wojcik & Matt Trifiro**







# LF Edge Interactive Landsc

---

How to ensure that your org/tech is properly represented

# State of the Edge Project

Vendor-neutral platform for open research on edge computing that is dedicated to accelerating innovation by crowdsourcing a shared vocabulary for edge.

- Founded in 2017
- Recently transitioned under the umbrella of LF Edge
- Assets:
  - State of the Edge reports
  - Open glossary of Edge Computing
  - Edge Computing Landscape





# CNCF Cloud Native Interactive Landscape

The Cloud Native Trail Map (png, pdf) is CNCF's recommended path through the cloud native landscape. The cloud native landscape (png, pdf), serverless landscape (png, pdf), and member landscape (png, pdf) are dynamically generated below. Please open a pull request to correct any issues. Greyed logos are not open source. Last Updated: 2020-06-04 16:19:48Z

You are viewing 1,407 cards with a total of 2,269,396 stars, market cap of \$16.5T and funding of \$66.13B.

- Reset Filters
- Grouping: N/A
- Sort By: N/A
- Category: N/A
- CNCF Relation: Any
- License: Any
- Organization: Any
- Headquarters Location: Any

- Example filters:
- Cards by age
  - Open source landscape
  - Member cards
  - Cards by stars
  - Cards from China
  - Certified K8s/KCSP/KTP
  - Cards by MCap/Funding

Download as CSV

[Landscape](#)
[Card Mode](#)
[Serverless](#)
[Members](#)


 120%

App Definition & Development	Database	Streaming & Messaging	Application Definition & Image Build	Continuous Integration & Delivery	Platform	Observability and Analysis	
	Scheduling & Orchestration	Coordination & Service Discovery	Remote Procedure Call	Service Proxy			API Gateway
Orchestration & Management	Cloud Native Storage	Container Runtime	Cloud Native Network	Kubernetes Certified Service Provider			Kubernetes Training Partner
	Automation & Configuration	Container Registry	Security & Compliance	Key Management	Serverless		
Runtime	Provisioning						Members

This landscape is intended as a map through the previously uncharted terrain of cloud native technologies. There are many routes to deploying a cloud native application, with CNCF Projects representing a particularly well-trodden path.

l.cncf.io

Special





# Taxonomy

- **.Org:** Standards and collaboration groups involved in facilitating discussion by edge stakeholders of edge.
- **Traffic Routing:** DNS and software/projects to monitor and route traffic to the correct place.
- **Platforms:** Platforms focused on deploying, managing, and scaling custom-workloads at the edge (CDN & Distributed Caches, Application Delivery Network (ADN), Edge PaaS, IoT Focused, Decentralized)
- **Security:** Applications and projects focused primarily on security.
- **Networking:** Software or solutions that control the movement of packets (e.g. SD-WAN, NFV, NOS)
- **Infrastructure:** Infrastructure as a Service tools, vendors, and platforms for edge compute (Monitoring, Provisioning, Virtualization, Physical).
- **Hardware:** Physical gear, including assembled components (Core Silicon, Accelerators).
- **Edge OEMs:** Original Equipment Manufacturers (OEM) building key components critical for the edge ecosystem.
- **Wireless & Wireline:** Physical network infrastructure , protocols, & tooling focused and used at the edge (Fiber & Peering, Wireless).
- **Real Estate / Land / Data Centers:** Companies focused on building, maintaining, and operating data centers and related critical infrastructure for the edge (Tradition, Non-Traditional, Towers & Related, Municipal Right of Way)
- **Services / System Integrators:** Services for people integrating and deploying at the edge.
- **Other Edge Related Software:** Software projects /platforms common, but not specific to any of the other categories.
- **LF Edge Member Companies:** Member companies of LF Edge.

# How to add a new listing / edit an existing entry

## Github repo:

<https://github.com/State-of-the-Edge/lfedge-landscape>

- Open a PR or issue (with edits to the landscape.yml)
- Required inputs:
  - Name of organization or technology
  - Homepage url
  - .svg logo **\*Important: Only .svg format logos are accepted**
  - Twitter url
  - Crunchbase url
  - Assigned category (Descriptions for categories can be found in the [README.md](#))

```
landscape:
- category:
  name: .ORG
  subcategories:
  - subcategory:
    name: .ORG
    items:
    - item:
      name: Cloud Native Computing Foundation
      homepage_url: 'https://www.cncf.io/'
      logo: 'https://github.com/cncf/artwork/blob/master/other/cncf/stacked/color/cncf-stacked-color.svg'
      twitter: 'https://twitter.com/cloudnativefdn'
      crunchbase: 'https://www.crunchbase.com/organization/cloud-native-computing-foundation'
```

Alternate option: Email the required inputs to [glossary-wg-landscape@lists.lfedge.org](mailto:glossary-wg-landscape@lists.lfedge.org)

# How to get involved

- Make sure your listing is up to date
- Join the email list: <https://lists.lfedge.org/g/glossary-wg-landscape>
- Join the bi-weekly calls: <https://lists.lfedge.org/g/glossary-wg-landscape/calendar>



**Molly Wojcik**

Chair of State of the Edge  
Landscape Working Group

[molly@section.io](mailto:molly@section.io)



**Matt Trifiro**

Co-Founder & Chair of  
State of the Edge

[matt@vapor.io](mailto:matt@vapor.io)





EDGE X FOUNDRY™

# EdgeX Elections

# Election Schedule (approved by TSC)

- Collection of voter registries (now to June 12)
- Nominations for any chair or TSC at-large positions (now to June 12)
- Chair and at-large elections (week of Jun 15-19)
  - We will have an election for at-large seats as we have 3 nominees and 2 seats
- TSC Chair election (week of Jun 25-29)

Chairs - please provide changes/additions on voter list by EOD June 12th (Friday)

Changes to date: addition of Rocky Jin as contributor

# Election Schedule (approved by TSC)

- Current Nominations (now to June 12)

- DevOps: Ernesto Ojeda (Intel)
- Application/Analytics: Mike Johanson (Intel)
- Outreach: Keith Steele (IOTech)
- TestingQA: James Butcher (IOTech)
- Device Services: Iain Anderson (IOTech)
- Security: Colin Hutchinson (Kong)
- Core: Jim White (IOTech)
- **At Large: Lenny Goodell (Intel), Tony Espy (Canonical), Sean McGinnis (Dell Technologies)**

- Volunteer positions (non-TSC voting)

- Release Czar: Lisa Ranjibar
- PM: Lenny Goodell

## Open Roles

- User Advocate



EDGE X FOUNDRY™

Thank you APJ!!

# APJ Opens

Questions that the community can answer?

Initiatives you'd like to let us know about?

How can EdgeX do more in APJ?

How can we better support your efforts?



EDGE X FOUNDRY™

# Upcoming Events & Dev Advocate Update

Aaron's updates



# Upcoming External Events

Full list of LF events available at:  
<https://events.linuxfoundation.org/>

Additional LF Edge events available at:  
<https://www.lfedge.org/events/>

- › **“On the Edge with LF Edge” Webinars**
  - › Project EVE Webinar (May 29 at 9 am PDT):
    - › Register for the webinar!  
[https://zoom.us/webinar/register/8815888722994/WN\\_35oZJ3hrQE69snMaiJUTPg](https://zoom.us/webinar/register/8815888722994/WN_35oZJ3hrQE69snMaiJUTPg)
- › [Open Source Summit North America](#): 29 June - 2 July, 2020 - Virtual
  - › 90 minute session(s) - July 2 at 12-1:30pm CST
- › [IIOT World](#): 30 June - 1 July, 2020 - Virtual
  - › Arpit Joshipura: “Uniting the Edge for Tomorrow’s Demands.”
  - › Jim White: “Using Open Source Technology to Manage IoT/Edge Solutions.”
- › [Open Source Summit Japan](#): 15-16 September, 2020 - Tokyo, Japan
  - › CFP Open: <https://events.linuxfoundation.org/open-source-summit-japan/program/cfp/>

# Upcoming External Events

- › [Open Networking & Edge Summit North America](#): 28-29 September, 2020 - Los Angeles, CA
  - › [ONES Unconference Track](#)- **Virtual**
- › [Open Source Summit Europe](#): 26-28 October, 2020 - Dublin, Ireland-
  - › CFP Open: <https://events.linuxfoundation.org/open-source-summit-europe/program/cfp/>
- › [IoT Solutions World Congress](#): **MOVED** 11-13 May, 2021 - Barcelona, Spain
  - › Call for Testbeds Open: <https://www.iotsworldcongress.com/activities/testbeds/>
- › [Open Networking & Edge Summit Europe](#): TBD Q4, 2020 - Antwerp, Belgium- **Cancelled**
  - › CFP Open: <https://events.linuxfoundation.org/open-networking-edge-summit-europe/program/cfp/>
- › Discussions around upcoming events occur in the LF Edge Outreach Committee
- › Members may subscribe at: <https://lists.lfedge.org/g/outreach-committee>



# Upcoming Project Events

- › none

- › Projects can add their events to this list by sending the Wiki page listing the information to [info@lfedge.org](mailto:info@lfedge.org)



EDGE X FOUNDRY™

Thank You