

# Fuji

Fuji is going to be a minor release and the 5th community release slated for November 2019.

## Release Information

- New and improved security services - fully integrated with existing micro services (API Gateway, secure storage)
- Addition of PKI infrastructure for token/key generation
- Application services and application functions SDK as full replacements for older export services (much more efficient, scalable with and SDK to help the user community build custom north side integration)
  - Inclusion of north side encryption and compression functions
  - Improved/updated support for Azure IoT Hub, Amazon IoT Core
- System management improvements to include ability to set configuration
- Improved testing and quality assurance procedures and tools
  - Implementation of an improved and more flexible test framework
  - Performance testing harness and regular performance metrics collection
  - Improved black box testing and framework to include device service black box test coverage
  - Unit test coverage for all services above 35%
- Addition of an many more device services to include BLE, BACnet, OPC UA and IP Camera Device Services
- Improved and added documentation; allowing for documentation versioning

## Release Czar tracking document

[Fuji Release\\_12-3-2019.docx](#)

[Fuji Release\\_10-3-2019.docx](#)

## Release Dates

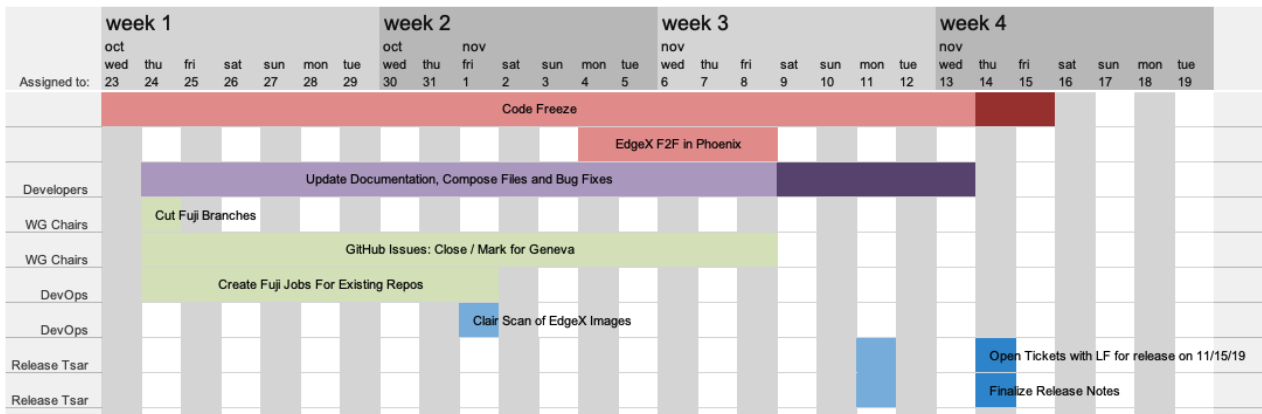
Code Freeze: Oct 23, 2019

Release: Nov 15, 2019

Release Schedule (with extension):

### Fuji Release

Start Date: 10/23/19 (with extension)



## Release Docker Compose

<https://github.com/edgexfoundry/developer-scripts/tree/master/releases/fuji/compose-files>